

Flush Clamp

by **lindapter**®

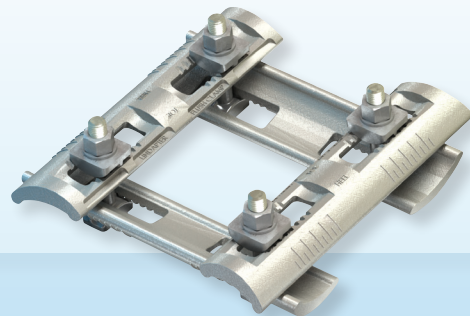
The Lindapter Flush Clamp is a highly adjustable Girder Clamp System without the need of a location plate.

For speed and simplicity of installation, the Flush Clamp features an innovative 'beam width selector' that allows the installer to quickly adjust the clamp to the required setting for the size of the steel. The innovative design features special bolts and washers that engage with the teeth on the body of the clamp to prevent movement.



KEY BENEFITS

- No welding or drilling
- Fast, cost effective installation
- An off the shelf solution with no location plate
- Highly adjustable for precise alignment
- Large clamping range to suit a variety of steel sections
- Suitable for beams with flanges sloping at up to 10°
- No hot work permits
- Easy to install with simple hand tools
- Guaranteed Safe Working Load



FLUSH CLAMP DATA

Product Code	Special Bolt Size	Safe Working Loads (5:1 Factor of Safety)		Clamping Range	
		Tensile / 4 Bolts lbs	Frictional / 4 Bolts lbs	Flange Thickness	Flange Width ¹⁾
LFCM16	5/8"	6744	1686	3/16" - 3/4"	3" - 7"

1) Depending on beam connection angles (table overleaf). For Design Data, visit the website.

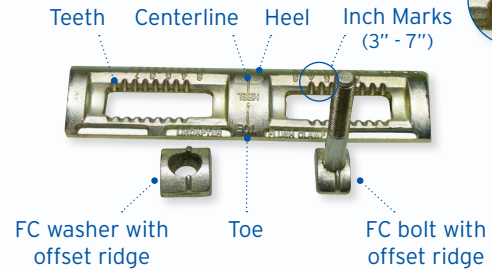
FLUSH CLAMP CONTENTS & PARTS

BOX CONTENTS

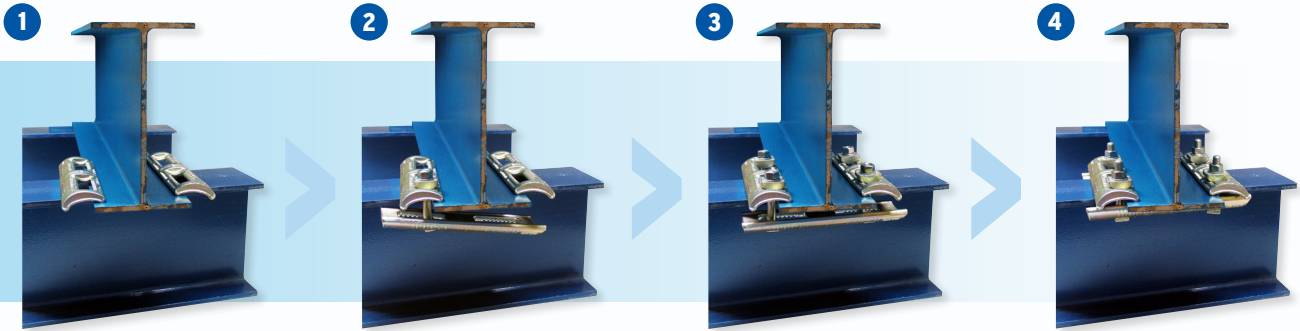
- 4 x Flush Clamp Body (Drop forged)
- 4 x Flush Clamp Bolt (Grade 8.8)
- 4 x Flush Clamp Washer
- 4 x M16 (5/8") Hexagon Nut
- 4 x M16 (5/8") Hexagon Lock Nut
- 4 x M16 (5/8") Washer
- 1 x Installation Card



PARTS TO NOTE



STEP BY STEP INSTALLATION



1 Position a Flush Clamp (FC) body on each side of the connection with the toe on the upper flange & the heel centrally on the lower flange.

2 Loosely position the FC bodies on the underside using an FC bolt & FC washer and a standard nut & washer on each of the four connection points.

3 Adjust the FC bodies so that they are central to the flanges & adjust the FC bolts and washers so the ridges fit into the teeth on the bodies.

4 Once aligned, finger-tighten the nuts until the FC bodies are touching, then tighten the nuts to a torque of 108 ft lb. Fit locknuts & tighten to complete installation.

MINIMUM POSSIBLE BEAM CONNECTION ANGLES

	Flange Width	Top Beam				
		3"	4"	5"	6"	7"
Bottom Beam	3"	45°	50°	55°	65°	75°
	4"	50°	50°	55°	65°	75°
	5"	55°	55°	55°	65°	75°
	6"	65°	65°	65°	65°	75°
	7"	75°	75°	75°	75°	80°

Authorized Lindapter Distributor

For more information please contact:



Branches in:

Spokane, WA - Yakima, WA
Billings, MT - Gillette, WY
Eugene, OR - Medford, OR
Boise, ID - Idaho Falls, ID

Tel (toll free):
800-348-4808

Email:
sales@edgecs.com

Web:
www.edgecs.com