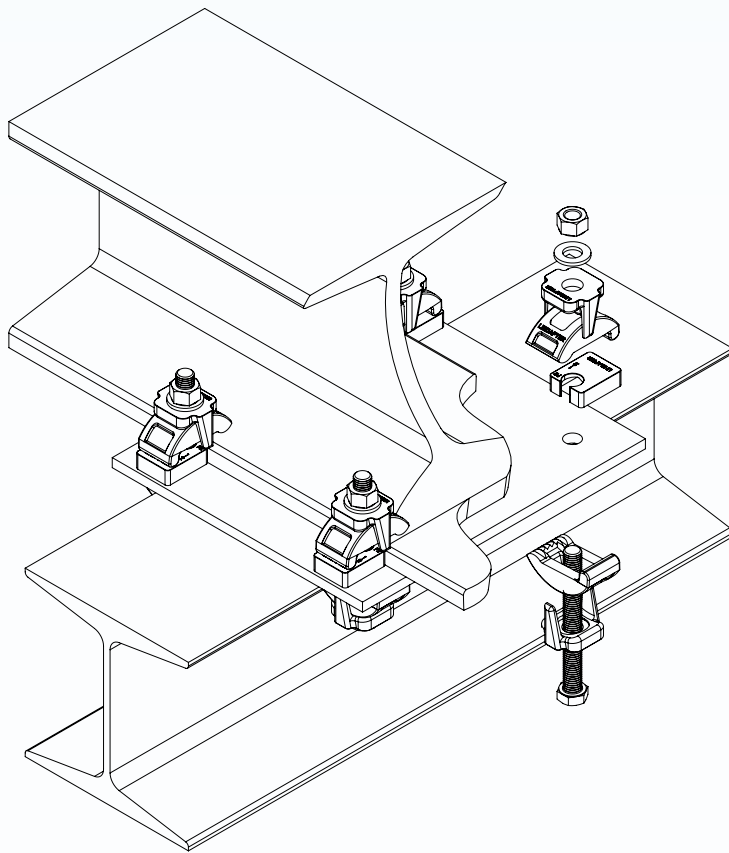


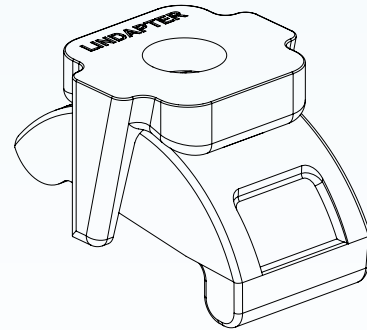
Type LR Girder Clamp Guide



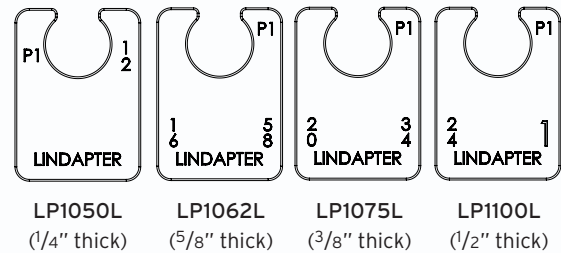
Step-by-Step Installation

1. Pass bolt through Type LR clamp below.
2. Pass bolt through any packing pieces required (dependant on flange thickness).
3. Ensuring that the clamp is perpendicular to and butted up to the edge of the lower beam flange, along with any packing pieces that the tail of the clamp will sit on, pass the bolt up through the plate.
4. Place any packing pieces required (dependant on flange thickness) for the upper beam over the bolt.
5. Place Type LR clamp over the bolt, ensuring perpendicular to beam and butted up against the flange.
6. Place a standard washer and a standard nut on the bolt and hand-tighten.
7. Assemble the remaining bolts.
8. Check alignment and adjust if necessary by loosening the nuts and sliding plate along so that beams are in the correct place.
9. Tighten up the nuts to the recommended tightening torque using a calibrated torque wrench.

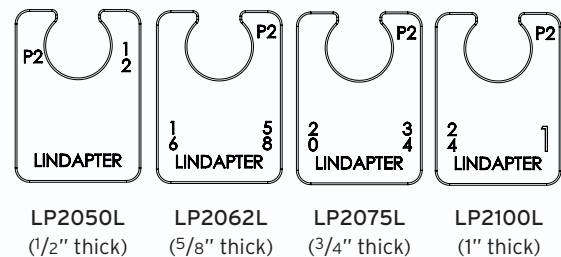
Product



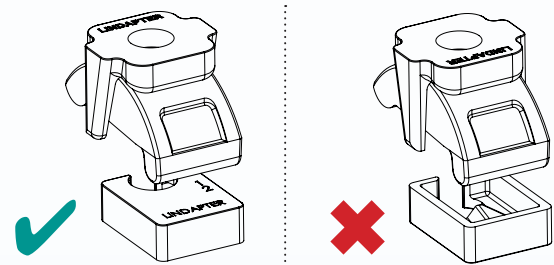
P1 Packing Pieces



P2 Packing Pieces



Correct / Incorrect



Bolt Diameter	Tightening Torque for Grd. 5 / A325 Bolts
1/2"	66 ft lb
5/8"	177 ft lb
3/4"	347 ft lb
1"	590 ft lb