



Construction Supply

# the cutting edge

innovative products and solutions from the construction experts  
www.edgecs.com

Mar 1 - Apr 15, 2019

## \$1 PER FOOT DISCOUNT WHEN YOU BUY 3 OR MORE LADDERS!

### Fiberglass Step Ladders

FS-1500 SERIES  
LOFS1504

4'	\$73.00
5'	\$86.00
6'	\$91.00
LOFS1508	
8'	\$123.00
LOFS1510	
10'	\$189.00
LOFS1512	
12'	\$238.00



### Cross-Step Ladder Series

FXS-1500 Series  
2 IN 1 LADDER

LOFXS1504	
4'	\$84.00
LOFXS1506	
6'	\$111.00
LOFXS1508	
8'	\$148.00
LOFXS1510	
10'	\$219.00
LOFXS1512	
12'	\$269.00



New **GREEN** Color Designates  
Leaneable Ladder!

2 IN 1  
LADDER



### Fiberglass Extension Ladders

FE-3200 SERIES

LOFE3216	
16'	\$171.00
LOFE3220	
20'	\$195.00
LOFE3224	
24'	\$226.00
LOFE3228	
28'	\$267.00
LOFE3232	
32'	\$333.00



### Do You Know:

- Minimum Perpendicular Ladder Clearance?
- How often are ladders required to be inspected?
- How high can you climb without fall protection?

Let Edge train your team in ladder  
safety and inspections to help  
answer these questions and more!



### Fiberglass Twin Step Ladders

FM-1500 SERIES

LOFM1504	
4'	\$117.00
LOFM1506	
6'	\$154.00
LOFM1508	
8'	\$213.00
LOFM1510	
10'	\$268.00
LOFM1512	
12'	\$324.00



### Fiberglass Platform Ladders

FXP-1700 SERIES - 300LB

Type 1A	
LOFXP1703	
3'	\$146.00
LOFXP1704	
4'	\$174.00
LOFXP1705	
5'	\$189.00
LOFXP1706	
6'	\$217.00
LOFXP1708	
8'	\$274.00
LOFXP1710	
10'	\$327.00
LOFXP1712	
12'	\$410.00



### Fiberglass Tripod Ladders

FT-1500 SERIES

LOFT1504	
4'	\$119.00
LOFT1505	
5'	\$131.00
LOFT1506	
6'	\$147.00
LOFT1508	
8'	\$188.00
LOFT1510	
10'	\$274.00
LOFT1512	
12'	\$309.00



Extended 21" Handrail  
for Added Safety & 30%  
Larger Platform Area  
for Added Comfort!

DaBoot Slip Resistant  
Bottom & SHOX System



ProTop w/ Multiple Tool  
Slots & Magnet

SPOKANE	SEATTLE	YAKIMA	EUGENE	MEDFORD	BILLINGS	GILLETTE	BOISE	IDAHO FALLS
1503 E. Riverside Ave. Spokane, WA 99202 (509) 535-9841 (800) 348-4808 (509) 534-3139 (Fax)	18161 Segale Park Dr B. Tukwila, WA 98188 (206) 764-9488 (800) 481-TOOL (206) 764-9487 (Fax)	812 E. Mead Yakima, WA 98903 (509) 248-1144 (800) 243-5582 (509) 575-4696 (Fax)	490 S. Bertelsen Eugene, OR 97402 (541) 342-3641 (800) 944-0165 (541) 343-1753 (Fax)	1789 Sage Rd. Medford, OR 97501 (541) 779-0187 (800) 871-3919 (541) 773-4599 (Fax)	120 Moore Lane Billings, MT 59101 (406) 248-7196 (800) 272-7196 (406) 248-7269 (Fax)	105 Warren Ave. Gillette, WY 82716 (307) 682-8522 (800) 670-6851 (307) 682-8576 (Fax)	2000 Century Way Boise, ID 83709 (208) 377-0158 (800) 528-5118 (208) 377-0978 (Fax)	760 W. Broadway Idaho Falls, ID 83402 (208) 522-7082 (208) 529-5456 (Fax)



# DeWalt Hammers & Dust Collection

Construction Supply



**\$505**

**DTDCH273P2:**

20V Max XR Brushless 1" Rotary Hammer. Lightweight design is ideal when used in overhead applications.



**\$669**

**DTDCH293X2**

The DCH293X2 20V Max XR (with 60V Batteries) Brushless 1-1/8" Rotary Hammer is a high-performance drill ideally suited for all day use and large diameter hole drilling, even in the hardest concrete.



**\$799**

**60V**

**DTDCH481X2:**

1-9/16" SDS Max 60V Brushless Combination Hammer Kit.



**\$159**

**Dust Extractor  
DTDWH303DH:**

Dust Extractor for 1" 20V MAX SDS Hammer. 2-second power off delay, replaceable HEPA filter. Easily adjust depth stop for accurate anchor hole depths



**\$175**

**Dust Extractor  
DTDWH304DH:**

Integrated Hammer Drill Dust Extractor FOR 1-1/8" SDS Hammer w/ HEPA filter for protection from harmful dust.



**\$299**

**DTDCH133M2:**

20V Max XR Brushless 1" D-Handle Rotary Hammer. This RotoHammer is Dust Extraction Ready w/ the DTD25301D (shown right)



**\$99**

**Dust Extractor  
DTD25301D:**

Dust Extractor Telescope w/ hose for SDS Rotary Hammers. Dust extraction lasts two seconds after drill is switched off for an efficient clean.

**Call for a Demo on Dust Containment!**



**HAMMER**



**BIT**



**SHROUD**

**DUST CONTAINMENT 101**



**GRINDER**



**WHEEL**



**SHROUD**



**DTDWV9000  
Universal Quick  
Connect**



**\$395**

**DTDWV010**

8 gal Dust Extractor HEPA Dust Extractor with automatic filter cleaning

**\$580**

**DTDWV012**

10 gal Dust Extractor Vacuum w/ automatic Filter that clean pulses every 30 seconds. HEPA vac when used w/ HEPA filters.



**\$999**

**DTDCH733X2:**

1-7/8" 60V SDS Max Rotary Hammer Kit. The most powerful Cordless rotary hammer powered by Dewalt. Ideal for horizontal and downward drilling for #5—#9 rebar applications, core drilling up to 5" and chipping in any mid-to-lower wall and floor applications. Includes: Hammer, 2 x 60V batteries, charger and case.

**FREE Flexvolt Worm Saw & Blade w/ purchase**



**DTDCS577X1**  
Flexvolt 60V Max 7-1/4" worm style saw kit - 9.0Ah battery.



**FREE**

**DTDWA31724D**

24 tooth Demolition Saw Blade. 7-1/4" diameter, 5/8" arbor

**Buy 1 kit for \$299 get the 2nd kit for \$99!!!**

**2 Kits for only \$398 While Supplies Last**



**DTDCK299P2**

20V Max XR Li-Ion Cordless Brushless Hammer/Impact Combo Kit. Includes brushless hammer drill, brushless impact driver, 2 x 20V 5.0Ah batteries, charger & hard case



**DTDW089LGT**  
12V Max 3 X 360° Green Line laser level.



**DTDW088K**  
Cross Line Laser for leveling and layout applications



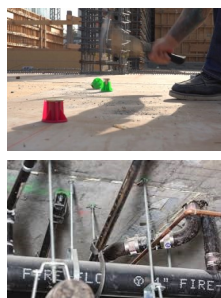
**DTDW083K**  
Self leveling 3-beam laser pointer



**Also available in Red Beam!  
DTDW079LRT**

**DTDW079LGT**

20V Max Green rotary laser level. 2000 ft range with detector, accuracy at 100ft +/- 1/16", Class 3 laser, self leveling. Includes Every-thing shown.



**WOOD-KNOCKER®II+ & BANG-IT®**

**CAST-IN-PLACE CONCRETE INSERT ANCHORS**



**For Wood & Metal Deck Applications**

**RLPFM2521350:** 3/8" OR 1/2" Combo insert for Wood deck . Gray - QTY 100  
**RL7543-PWR:** 3/8-1/2 Combo insert for metal deck Gray - QTY 100



**\$962**



Includes FREE 14" Blade  
VH5 for cured concrete

**K770 Power Cutter**

A light, compact & powerful  
machine with superior power-  
to-weight ratio.

TA967682101

**Buy \$2500 in Any Husqvarna Products**

**Get your Choice FREE**



**120i Battery Chainsaw w/ Charger**  
14" 36.5V Li-ion Battery  
TA967098102

**320iB Battery Blower w/ Charger**  
40V Battery, 289cfm Air flow in pipe,  
82mph Air speed. TA967094202

**While Supplies Last!**

**\$1249**



Includes FREE 14" Blade  
VH5 for cured concrete

**K970III Power Cutter**

Robust & reliable. Less sensitive to  
outdoor conditions & fuel variations.  
Light and powerful

TA967348001



**QH5: 14" General purpose diamond blade.**

**Buy 1: \$60 TA542773670**

**Buy 5: \$275 (you save \$25)**

**Buy 10: \$500 (you save \$100)**



**\$849**

**K3000 Wet Concrete Electric**

Electric Quickie Power Cutter. 5" cutting  
depth, 14" blade, 2.4hp

TA966799401



**\$1550**

**K760 CUT-N-BREAK**

Enables you to cut as deep as 16" from one side.  
(high performing twin blades included with every  
Cut-N-Break purchase)

TA967195701

**Replacement Blades (Set of 2)**

TA576778501: **\$256**



**\$2300**

**S26 Single-Phase HEPA Dust Extractor**

Features include 120V, Certified HEPA H13  
Filters, Jet Pulse pre-filter cleaning, hour  
counter and vacuum meter for filter control

**258 cfm suction!!!!!!**

**Replacement Filters and Bag**

Pre Filter: TA590430201

Hepa Filters: TA590429801

Continuous Bag: TA590429201

**Enough Power To handle 7"  
& above grinding applications**



**TA965173606: DMS240 core drill  
w/ vacuum pump**

**TA965173601: DMS240 core drill  
w/out vacuum pump**



**\$1539**

**TA968411301: DM230 Hand held  
core drill. (hand held core drilling  
up to 3" & w/ stand up to 6")**



**\$1669**

**TA966563503: DM220 Hand  
core drill w/ 360° Adjustable  
handle. (hand held core drilling  
up to 3" & w/ stand up to 6")**



**\$717**

**TA966827202: DS150  
stand for DM230 core  
drill**



**\$784**

**TA966827304: DS250 stand for  
DM220 Core Drill**



**\$1669**

**DP4244017: Core Cut DK12  
Hand Held Drill Motor. Drill up  
to 3" hand held and 6" w/ core  
rig stand.**



**\$2339**

**DP4245055: M1 Complete.  
Drill up to 10" holes. Slide  
handle allows drilling in tight  
areas.**

**Diamond Core Bits**

**TA592880701: 2"**

**TA592880702: 2-1/2"**

**TA592880703: 3"**

**TA592880704: 3-1/2"**

**TA592880705: 4"**

**TA592880708: 5"**

**TA592880709: 6"**

**TA592880711: 8"**

**TA592880713: 10"**

**TA542785169: 12"**



**SPOKANE**  
(509) 535-9841  
(800) 348-4808

**BILLINGS**  
(406) 248-7196

**YAKIMA**  
(509) 248-1144

**GILLETTE**  
(307) 682-8522

**SEATTLE**  
(206) 764-9488

**BOISE**  
(208) 377-0158

**EUGENE**  
(541) 342-3641

**IDAHO FALLS**  
(208) 522-7082

**MEDFORD**  
(541) 779-0187

# Jobsite Storage Chests & Cabinets

## EDGE Stocks More Models - Ask Your Sales Rep For Other Special Prices!



**\$690**

**KN4830**

Jobsite Storage Chest  
48"Wx30"Dx34"H (25 cubic ft.)



**\$693**

**KN60**

Jobsite Storage Chest  
60"Wx24"Dx23"H (20 cubic ft.)



**EZ40-PO-SET**

4" swivel, 2 solid

**EZ60-PO-SET**

6" swivel, 2 solid



**\$1086**

**KN79**

StoraMaster Piano Box  
w/ large dual folding doors  
48"Wx30"Dx49"H (38 cubic ft.)



**\$1092**

**KN89**

Jobsite Storage Chest  
46"Hx30"Dx60"W (48 cubic ft.)



**\$2837**

**KN119-01**

Mobile Heavy Duty Field Station  
Watchman® 5 lock system.  
82"Wx60"Hx42"  
(115.2 Cubic ft. capacity)



**\$1776**

**KN139**

Jobmaster® Cabinet  
Available w/ & w/o Drawers  
60"x30"x57" (55 cubic ft.)



**\$1449**

**KN44**

4-Drawer rolling work bench  
37"Wx40"Hx25"  
(800 lb. load capacity)



**\$1492**

**KN109**

4-Drawer rolling work bench  
60"Wx24"Hx60" (800 lb. load capacity)  
**\*Ask about other configurations**



## Safety Kage THE SAFETY KAGE!!!

**KN139-SK:**

The Model KN139-SK Safety Kage™ cabinet is an Industry First, one-stop-shop for Jobsite Safety. The interior of the cabinet houses ample secure storage space for all types of fall protection and personal protection equipment. On the right side of the cage are hooks to hang harnesses, pulleys, and ropes. On the left side of the Kage there are 3 shelves to store hard hats, vests, and gloves. The top shelf has cubby holes to store smaller safety items such as ear plugs, safety glasses, and dust masks. The exterior of the cabinet has protected storage for a first aid kit, fire extinguisher, and personal eye wash station.

**All Items Shown in Box are Sold Separately!**



### EDGE NOS BOX PROGRAM

Never Out Of Stock Box

Edge's all inclusive on-site inventory program.

- ◆ **Flexibility:** Stock the right items for your job during each phase. Choose the size and style of box you need
- ◆ **Billing:** Whether the inventory is purchased up front or consigned. What works best for you?
- ◆ **Management:** If you would like to control the inventory or have your Edge rep take care of it, you choose!

**Ask your Edge Sales Rep for Details!**



### Tool Kage \$1860

**KN139-MT:**

- Includes 4 shelves
- 16g Diamond Punched Steel Panels
- Power Pass for power distribution to all shelves
- Watchman IV lock system
- Four-way skids for easier transport
- Powder coat finish



**\$199**



15 Minute Installation

**KNCA-01:** KNAACK Armour Cart Kit for the Rubbermaid **RB4520**  
**KNCA-02:** Fits the **RB4500** & **RB4500-89** Flat and Curved handle narrow carts  
**KNCA-03:** Fits the **RB4520-89** flat handle cart (carts sold separately)



**Saddle Box's - Fit all full-size pickups**

**KN117-0-02:** 15.3cuft - 18"x27"x71" **\$840**

**KN127-0-02:** 11.8cuft - 18"x20"x71" **\$770**



**KN116-5-02:** Saddle box, full extra wide 15.3 cu ft **\$863**



**Knaack Weather Guard Steel - L-Shaped Transfer Tank**

**90 Gallon - White Fuel Tank**

**KN354-3-01 \$808**



**Construction Supply**

**All truck boxes come standard with Locks**

**Ask about more sizes, colors and configurations**





6 Cu. Ft. Steel Tray, Steel  
Handle, Flat Free Tire  
#UFM6SFFKB



72" Digging/Tamper  
Bar  
#UF11-600

72" San Angelo Bar  
Pencil Point  
#UF11-603



\$25.53

Ames Bow Rake  
15 tooth 60"  
#UF63-141



\$25.75

Razorback  
Round Point Shovel  
With Super Socket  
#UF45-530



Flat Free Tire Replacement  
#UFFFTKBCC



Curved Squeegee  
#MB89478: 24" \$34.50  
#MB89480: 36" \$43.50

Straight Squeegee  
#MB89474: 24" \$29.11



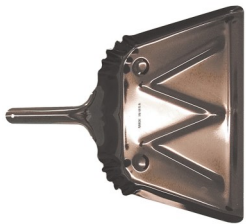
\$11.50

Round Point Shovel  
#UF40-191



\$11.50

Square Point Shovel  
#UF40-184



\$14.69  
MB89377  
16" Metal Hand  
Dust Pan



\$5.99  
Wood Broom Handle  
#MB89889: 5' w/ metal  
threaded tip



\$19  
KP1815  
Kleen Sweep Floor  
Sweeping Compound  
50lb box



\$5.50

Floor Brush Brace—Heavy Duty  
#MB89922: Metal



\$21.75  
\$16.95

Fine Sweeping Broom  
#MB89215: Horsehair  
#MB89223: Silver flagged-tip  
plastic (both 24" block 3" trim)



\$16.75  
\$39.63

Medium Sweeping Broom  
#MB89253: 24" block 3" trim  
#MB89263: 36" block 3" trim  
(Tampico/Horsehair fill)



\$16.50  
\$15.25

Coarse Sweeping Broom  
#MB89287: 24" block 3" trim  
#MB89348: 16" block 5.5" trim



#MB89377: 11" Warehouse  
Broom, corn 1-1/8" diam handle  
\$15.69

LOW  
PROFILE!  
NOW STOCKING!  
\$790



HGHMD130: Hougen Ultra Low Profile  
Magnetic Drill. Lightweight at only 23lbs,  
uses RotaLoc Plus™ annular cutters, Pilot  
light, Positive slug ejection, High torque  
gearing, Lift detector safety system.



\$259

Annular Cutters: 12,000 series Kit  
HG12002: 5pc annular cutter kit  
Includes: 9/16, 11/16, 13/16, 15/16,  
& 1-1/16: with a 2" D.O.C.



\$899

HGHMD904C: Hougen portable mag  
drill kit with coolant & tools



Annular Cutters: 12,000 series

- Made of hardened high speed tool steel
- Require less horsepower and thrust to cut, and last much longer than traditional hole making methods
- Feature a 3/4" diameter double-flatted shank and are available in 1, 2, and 3" D.O.C.
- Cutters are re-sharpenable
- Made in the USA



HSS Holecutters

- For sheet metal and thin materials up to 1/8" thick
- Last 10x longer and cut 3x faster than bi-metal hole saws or twist drills
- Use a single arbor, with a patented Quad-Lead thread mounting system
- Use with 14009 arbor
- Made in the USA

# EDGE Rental & Repair Services

**DAILY, WEEKLY, & MONTHLY RATES AVAILABLE!**

**FREE REPAIR ESTIMATES, QUICK TURN-A-ROUND, PROFESSIONAL SERVICE**



**PACPLS3GKIT**  
**\$305**

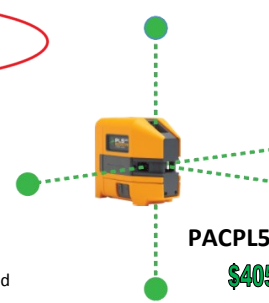


**PACPLS3RKIT**  
**\$233**



**PACPLSH2SYS**  
**PLS H2**  
**Rotary Laser Level**  
**\$899**

Horizontal only rotary laser designed for the jobsite. Rugged ergonomic design and simplified controls. Designed for General contractors, electricians, plumbers, and landscapers in both interior and exterior applications.



**PACPL5GKIT**  
**\$405**



**PACPLS5RKIT**  
**\$350**

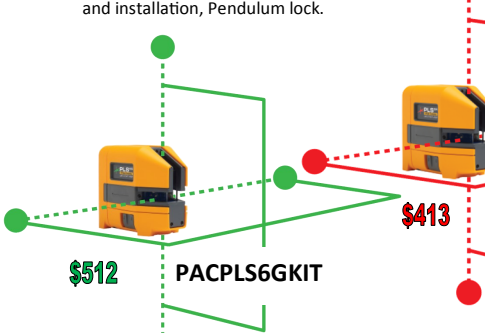
**PLS 5 Green or Red Beam**  
**5-point laser**

Self leveling five-point laser (plumb & square horizontal & verticle points) equipped for plumb, level, & square applications. In Red or Green, quick plumb layout and install, pendulum lock.

**PLS 3 Green or Red Beam**  
**3-point laser**

Self leveling three-point laser plumb dots and forward vertical laser level. Quick plumb layout and installation, Pendulum lock.

**ALL NEW DESIGN FOR 2019**



**\$512**  
**PACPLS6GKIT**

**PLS 6 Green or Red Beam**

**Combination Line & Point Laser**

Plumb, Level & Square in one tool. Self-leveling combination point and cross line laser level that includes vertical and horizontal modes with lines and points combined. Great for metal or wood stud install, general layout, square alignment, or finish carpentry.



**\$160**  
**PACPLS1**

**PLS 1 Red Beam**

**Laser Distance Measurement Tool**

Measures distance with the click of a button.



**\$422**

**PACPLS180GKIT**



**\$332**

**PACPLS180RKIT**

**PLS 180 Green or Red Beam**

**Cross line laser**

Self leveling cross line laser level is designed for multiple applications including framing, acoustic ceiling install, tile install, & other tasks. Red & green, quick layout and install projects, pendulum lock.

**Ask About More Laser Options to Best Fit Your Needs!**



**\$843**

**SU785651: Hanger Mac II**  
Holds 40 - 6 to 8" &  
120 - 2 to 4" pipe hangers  
1000# capacity



**\$1860**

**SU784920: Stor Mac 60**  
Lockable storage chest  
1,500# Load Capacity



**\$589**

**SU784990: Tainer Mac**  
Jobsite storage & transporter  
cart 1,500 lb Load Capacity



**\$603**

**SU783230: Pipe Rack**  
2,000 lb Load Capacity



**\$596**

**SU783317: Mac Rack**  
1,000 lb Load Capacity



Construction Supply

Trade-In And Get  
**\$100 OFF**

On M18 FUEL™ Kits



**Ask about other Milwaukee kits that qualify for this \$100 Trade-In Deal!!**

Trade-Ins must include Tool & Battery



**\$349 - \$100 = \$249**

**MI2754-22: M18 Fuel**  
3/8" compact impact  
wrench kit w/ friction  
ring



**\$349 - \$100 = \$249**

**MI2755-22: M18 Fuel**  
1/2" compact impact  
wrench kit w/ detent  
pin



**\$449 - \$100 = \$349**

**MI2767-22: M18 Fuel**  
1/2" High Torque impact  
wrench kit w/ friction  
ring



**\$299 - \$100 = \$199**

**MI2804-22: M18 Fuel**  
1/2" Hammer drill kit



**\$299 - \$100 = \$199**

**MI2853-22: M18 Fuel**  
1/4" Hex impact driver kit



**\$399 - \$100 = \$299**

**MI2997-22: M18 Fuel**  
1/2" Hammer drill &  
1/4" Hex Impact combo



# Python - Tool Safety Lanyards

## Stop The Drop!



### Attachment Point Examples



### Wristbands



### Spill Control Items



### Tool Holsters



### Tool Pouches



**DI1102000**  
Delta Vest style Full body harness w/ back D-ring  
Tongue buckle leg straps  
Repel™ webbing  
Built in lanyard keepers  
Impact indicator  
**Universal size**  
420 lb capacity



**DI1108502 (L)**  
Exofit Construction Vest Harness  
Rear & side D-rings  
One-handed quick connect buckle leg straps. Coated hardware for corrosion resistance. Sewn-in back pad & belt for added comfort and versatility. 3-D mesh lining with soft edge for comfort. Built-in



**DI1113127 (L)**  
Exofit NEX Const. Vest  
Alum Back & Side D-Rings. Premium comfort padding. Duo-Lock quick connect buckles. Hybrid comfort padding w/ moisture wicking technology. Revolver vertical torso adjusters. Covered safety labels and i-safe. 420lb capacity

Edge has a variety of Styles, Sizes and Configurations available. We have Welding/Arc flash, Tower climbing, Oil Derrick, Wind Energy, Rescue. Ask your Edge representative for the correct style and size to meet your needs.

## Connecting & Anchoring Devices



**DI1246011**  
EZ Stop Lanyard - 6ft  
Single leg energy absorbing system w/ Impact indicator



**DI1246021**  
EZ stop 6ft. dual leg shock lanyard 100% tie off lg aluminum hooks



**DI1244306**  
Shockwave 2, 6ft shock absorbing lanyard



**DI11244409**  
Shockwave 2 "Y"  
Shock absorbing



**DI1003000**  
(also available in 6')  
Web 3' tie off adapter  
420 lb capacity



**DI1201390**  
Web Scaffold Choker 17" long  
(fits max 3" diameter structure)



**DI3504450**  
(also available in 30ft)  
Ultralock Edge 50' galvanized cable w/ external energy absorber



**DI13500210**  
Nano-Lok Edge w/ steel snap hook 8ft working length. Leading Edge!!



**DI3500227**  
Nano-Lok Edge twin leg 100% Tie Off w/ aluminum pelican hooks. Leading Edge



**DI5920050**  
Chain Rebar Assy w/ Swivel  
20.5" chain rebar assembly with 2-1/2" swiveling flat steel rebar hook.



**\$139**



**MYTRK2000-Z7/50FT**  
**Titan II B-Compliant Roofing Kit**  
B-Compliant roof kit w/ 3600 lb carabiner, 50ft rope, rope grab w/ 3ft lanyard, reusable stainless steel roof anchor bracket with D-ring



**\$139**

**GU00815**  
**Roofing Kit**  
Bucket of Safe-Tie  
Includes basic harness, shock absorber lifeline, temper reusable anchor & 5 gal bucket



**GU00645**  
CB Anchor point  
12" post  
16"X16" Base  
Available in 12, 18, & 24" posts

**GU00102**  
Beamer 2000+  
Fits 3-1/2 to 14" beams up to 1-1/4" thick, 5,000 lb min breaking strength



**\$158**

Call our Engineered Systems to help with Permanent Rooftop Fall Protection Systems

**Edge stocks 1000's of Fall Protection Items!**



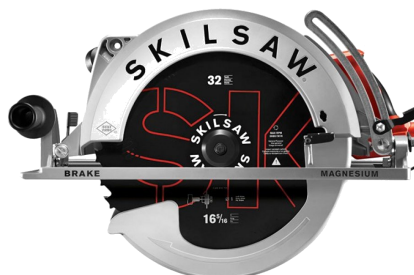
1503 E. Riverside  
P.O. Box 3437  
Spokane, Washington 99220

PRESORTED  
STANDARD  
U.S. POSTAGE  
**PAID**  
Spokane, WA 99201  
Permit No. 888



**\$195**

**SLSPT77WML-22:** Skil Saw Magnesium Worm Drive 7-1/4" Circular Saw w/ diablo blade. 15 amp 53 degree bevel



**\$589**

**NEW 16" WORM DRIVE!**

**SLSPT70V-11:** Skil SUPER SAWSQUATCH 16" Worm Drive Saw W/ Diablo Blade. 15Amp motor, 6-1/4" cutting capacity, 16-5/16" blade.



**\$175**

**SLSPT77W-22:** Skil Saw Aluminum Worm Drive 7-1/4" Circular Saw w/ diablo blade. 15 amp . 51 degree bevel



**\$335**

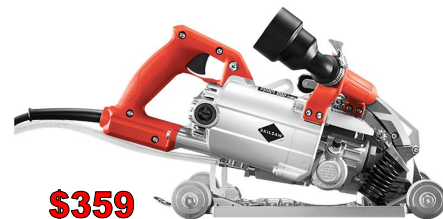
**SLSPT70WM:** Skil Sawsquatch 10-1/4" worm drive Saw w/ twist lock plug. Includes 40T diablo blade.



**\$645**

**NEW WALK BEHIND!**

**SLSPT79A-10:** Skil MEDUSAW WALK BEHIND Aluminum Worm Drive 7" Circular Saw for concrete. 15 amp. Vacuum hose adapter with clamp, water feed assembly, large foot and oversized wheels for improved stability.



**\$359**

**SLSPT79-00:** Skil MEDUSAW Aluminum Worm Drive 7" Circular Saw for concrete. 15 amp. Cut-ready adjustable plunge lock, Wet/dry dust management system



SPOKANE	SEATTLE	YAKIMA	BILLINGS	GILLETTE	EUGENE	MEDFORD	BOISE	IDAHO FALLS
(509) 535-9841	(206) 764-9488	(509) 248-1144	(406) 248-7196	(307) 682-8522	(541) 342-3641	(541) 779-0187	(208) 377-0158	(208) 522-7082
(800) 348-4808	(800) 481-8665	(800) 243-5582	(800) 272-7196	(800) 670-6851	(800) 944-0165	(800) 871-3919	(800) 528-5118	