



CELEBRATING 70 YEARS!

1949 - 2019 : Thank You Customers!

WINTER 2019/2020

Inquire about Purchase or Rental of Indirect or Other Style Heaters to Suit Your Job Needs!

Propane



LB125



LB170



LB400



LB400: Forced Air Heater

Electronic ignition for sure starts, 400,000 BTU/hr Propane.

LB125: 50,000-100,000 BTU/hr

LB170: 125,000-170,000 BTU/hr

Kerosene



LBK175: Kerosene forced air heater
175,000 BTU/hr

Electric Heaters



PHE1.5:
5,100 BTU/hr
120V / 12.5A
1500 Watts



PHE6:
20,500 BTU/hr
240V / 25A
6,000 Watts



PHE9:
30,700 BTU/hr
240V / 37.5A
9,000 Watts



TPIFES-1024-1CA: 240v,
10 KW/42 Amps, single
stage, 34,000 BTU/hr
heat output. 240V / .



TPI188TASA: Milkhouse
electric fan forced 4400
BTU/hr / 120V Portable
heater



YMEF2600: 2600 watts, Super-fuel-
efficient, 7.8 hr run time on one tank of
gas, 2.9 gal tank. Sound rating = 68 dBA.
19/21.6 amps @ 120v



YMEF7200DE: Quiet & Powerful
7200 watts, Electric start with
Battery, 25 amps @ 240V, 80dBA &
8 Hr run time



YMEF5500DE: Quiet & Powerful
5500 watts, Electric start with
Battery, 22.9 amps @ 240V, 74dBA
& 9 Hr run time



YMYG-2800i: 2800 watt Inverter with
Pulse Width Modulation which is good for
sensitive electronics such as computers.
Includes 30 amp circuit (15 hr run
time/2500 watt sustained)

YMEF2000iS: Lightweight/ Quiet &
Powerful 2000 watts, 79cc, 4-Stroke,
OHV, Air-cooled, Single cylinder. 11
hr runtime



SPOKANE	SEATTLE	YAKIMA	EUGENE	MEDFORD	BILLINGS	GILLETTE	BOISE	IDAHO FALLS
1503 E. Riverside Ave. Spokane, WA 99202 (509) 535-9841 (800) 348-4808 (509) 534-3139 (Fax)	18161 Segale Park Dr B. Tukwila, WA 98188 (206) 764-9488 (800) 481-TOOL (206) 764-9487 (Fax)	812 E. Mead Yakima, WA 98903 (509) 248-1144 (800) 243-5582 (509) 575-4696 (Fax)	490 S. Bertelsen Eugene, OR 97402 (541) 342-3641 (800) 944-0165 (541) 343-1753 (Fax)	1789 Sage Rd. Medford, OR 97501 (541) 779-0187 (800) 871-3919 (541) 773-4599 (Fax)	120 Moore Lane Billings, MT 59101 (406) 248-7196 (800) 272-7196 (406) 248-7269 (Fax)	105 Warren Ave. Gillette, WY 82716 (307) 682-8522 (800) 670-6851 (307) 682-8576 (Fax)	2000 Century Way Boise, ID 83709 (208) 377-0158 (800) 528-5118 (208) 377-0978 (Fax)	760 W. Broadway Idaho Falls, ID 83402 (208) 522-7082 (208) 529-5456 (Fax)

Gear Up For WINTER HI-VIZ SAFETY

\$69



PIP Class 3 Rip Stop Bomber Jacket
#PIP333-1770 (M-XXL)
 Hi-Visibility Rip Stop Bomber Jacket, ANSI 107 Class 3.
 Features:

- Removable Liner
- Adjustable Cuffs
- "D" ring harness pass through
- Hide-a-way Hood



The most **Innovative** cold weather safety work jacket on the market



KOJS121-(M-3X)

ONLY \$35 ea.

ML Kishigo Bomber Jacket

- ANSI 107 Class 3 Compliant
- Durable Waterproof seam sealed shell
- Thermal insulation
- 2" wide reflective material
- Adjustable Cuffs



MG3460: Thinsulate S-XL



MG9622: Insulated Liner *One size fits all!*



MJ3399KLY Emperor Penguin Winter Hi-Vis Yellow M-XL



MJ3228HYT: Super-Dex cold weather insulated Hi-Vis yellow. M-XL



MJ3396HY Polar Penguin Winter Glove Hi-Vis Yellow M-XL



MJ3388 Atlas Thermo-Fit S-XL



JS3000434: Wind Guard Fits over cap style hard hat to keep wind out, flame retardant, warmth for 32° to 0°.



JS3000436: Wind Guard Fits over full brim hard hat to keep wind out, flame retardant, warmth for 32° to 0°.



PIP364-1170: 3-in-1 Polyester Fleece winter liner with drawstring



JS3000442: Winter liner 225 Full quilted



JS3005346: Wind Jammer IV Polar Fleece Liner



JS3000441: Winter Liner 400 Wrap Liner w/ collar



YA02161: Maxxdry Mud Stopper Boot Brush



MonsterGrips: Adjustable Velcro toe strap
YA02153: Medium
YA02154: Large
YA02155: X-Large

WINTER TRACTION



MonsterGrips & Gripions Tungsten steel studs cut through snow & ice, soft rubber retains elasticity and durability.

Gripions: Light duty pull on traction devices.
YA02156: Small
YA02157 Medium
YA02158: Large
YA02159: X-Large

\$35 Full Zip or Hoodie your choice at this price
Majestic Hi-Viz Hooded Sweatshirt

#MJ75-5327-(M, L, XL & XXL)

ANSI Class 3 Sweatshirt with hood, Ribbed cuffs/waist

Majestic Hi-Viz Zip Front Hooded Sweatshirt

#MJ75-5325-(M, L, XL, XXL)



NEW for 2019

Majestic - Soft Shell Jacket

#MJ75-1371-(L - 2XL)

Other Sizes Available To Order

\$65



SPOKANE	SEATTLE	YAKIMA	EUGENE	MEDFORD	BILLINGS	GILLETTE	BOISE	IDAHO FALLS
1503 E. Riverside Ave. Spokane, WA 99202 (509) 535-9841 (800) 348-4808 (509) 534-3139 (Fax)	18161 Segale Park Dr B Tukwila WA 98188 (206) 764-9488 (800) 481-TOOL (206) 764-9487 (Fax)	812 E. Mead Yakima, WA 98903 (509) 248-1144 (800) 243-5582 (509) 575-4696 (Fax)	490 S. Bertelsen Eugene, OR 97402 (541) 342-3641 (541) 779-0187 (800) 944-0165 (541) 343-1753 (Fax)	1789 Sage Rd. Medford, OR 97501 (541) 779-0187 (800) 871-3919 (541) 773-4599 (Fax)	120 Moore Lane Billings, MT 59101 (406) 248-7196 (800) 272-7196 (406) 248-7269 (Fax)	105 Warren Ave. Gillette, WY 82716 (307) 682-8522 (800) 670-6851 (307) 682-8576 (Fax)	2000 Century Way Boise, ID 83709 (208) 377-0158 (800) 528-5118 (208) 377-0978 (Fax)	760 W. Broadway Idaho Falls, ID 83402 (208) 377-0158 (208) 522-7082 (208) 529-5456 (Fax)

Keep Your Jobsite Cleared & Protected from the Elements



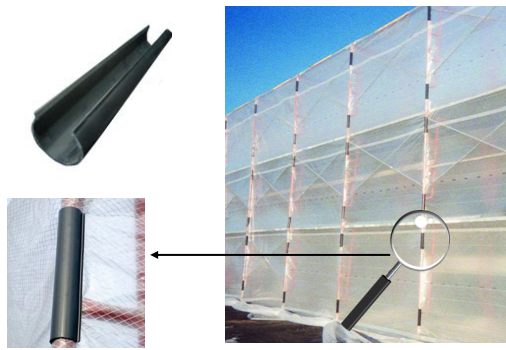
DuraSkrim Construction Enclosure:

Reinforced Enclosure Plastic. High strength poly construction and heavy duty scrim reinforcement easily helps Dura-Skrim® outperform the competition.

RNR5CC20100 (20X100 reinforced)

RNR5CC20100FR (20X100 reinforced fire retardant)

RNR5CC40100 (40'x100 reinforced)



Wind Clips: #WC
Easily attaches your sheeting to poles or scaffolding



TRACTION SAND: 70 LB Tube Sand Bag



Multi-Purpose Tarps

- TWT0608: 6'X8' Blue
- TWT0810: 8'X10' Blue
- TWT1012: 10'X12' Blue
- TWT1020: 10'X20' Blue
- TWT1216: 12'X16' Blue
- TWT1220: 12'X20' Blue
- TWT1620: 16'X20' Blue
- TWT1824: 18'X24' Blue
- TWT2030: 20'X30' Blue
- TWT2040: 20' X 40' Blue



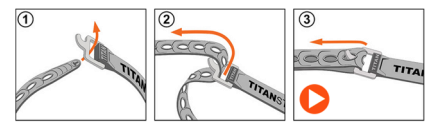
- PO212C: 2 mil - 12x200 Clear
- PO406C: 4 mil - 6x100 Clear
- PO408C: 4 mil - 8x100 Clear
- PO410B: 4 mil - 10x100 Black
- PO410C: 4 mil - 10x100 Clear
- PO610C: 6 mil - 10x100 Clear
- PO620C: 6 mil - 20x100 Clear
- PO620B: 6 mil - 20x100 Black
- PO620FR: Fire Retardant
- PO820C: 8 mil - 20x100 Clear
- PO1020B: 10 mil - 20x100 Black
- PO1020C: 10 mil - 20x100 Clear



Titan Straps: Polyurethane Material

- TNTS0914-FB: 14" Blue
- TNTS0125-O: 25" Orange
- TNTSI-0136-FG: 36" Fluor. Green

EASY TO USE
Thread. Pull. Tighten. It's that easy.



Logo Must Face Outward Thread Tip Through Buckle Stretch & Secure over flange, Tension hold gear like a vice.



UF16-404
\$19.99

18" Aluminum Snow Shovel

UF16-393
\$25.54

24" Steel Snow Pusher

UF16-274
\$13.99

18" Poly Snow Pusher

UF26-812: \$28.20

Aluminum Snow Scoop #12 size

UF26-724: \$31.24

Aluminum Snow Scoop #10 size

UF16-815: \$19.67

Poly Snow Scoop



Mighty Ties: 4" TO 48", black or natural
ACL11509C: 11" Natural 50# pack of 100
Ask your Edge sales rep for all the sizes available!



\$24.69



UFGPRR24:
Snow Roof Rake



\$26.06

UF81-109:
7" Sidewalk/Ice scraper



Ask about ICEMELT!!!



CH82088B
80 lb Professional Grade Ice Melt Spreader (shown with optional rain cover)



Snappi Hookers: Rubber straps w/ hooks
SNSH9": 9"
SNSH15": 15"
SNSH20": 20"
SNSH30": 30"

Look for many **More Great Products** throughout our stores!

www.edgecs.com





Construction Supply



WGWL12000HE: Big Dog 12,000 Watt Portable Generator

Durable Honda commercial engine, 120/240 Volt 1 PH, 90/45 amps, 688cc, Gas, Electric start, comes with wheel kit

Recepticles:

120 Volt Receptacles:

- 4 - 20A NEMA 5-20 GFI
- 1 - 20A locking GFI NEMA L5-20

120/240 Volt Recepticles:

- 1 - 60A NEMA 14-60



WGWL12000HECALMOD:

Same Specifications with the exception for the 50A Twist Lock Plug, designed for use with Temp Power Distribution Boxes.

- 1 - 50A Twist Lock Plug

Use With



COL01970-3R-02: Temp Power Distribution Spider Box. (6) 20A GFCI and circuit breaker protected NEMA 5-20 straight blade receptacles with covers

Temp Power



COL01918-00-08: 50FT Twist lock 50 Amp 125/250 volt, 3 pole 4 wire temp power cable.
COL01919-00-08 100FT Twist lock, 50 Amp 125/250 Volt, 3 pole 4 wire temp power cable.



COL01920-00-08: Y adapter for temp power cords. 125/250 Volt AC, 3 pole



Southwire®

COLD WEATHER CORDS!



Plastic stays flexible in cold temperatures!



COL01688-00-02: POLAR SOLAR. 50', 12/3, 15amp, lighted end

COL01689-00-02: POLAR SOLAR. 100', 12/3, 15 amp, lighted end

COL02588-00-02: 50', 12/3, 15 amp, lighted end

COL02589-00-02: 100', 12/3, 15 amp, lighted end

COL02578-00-0A: 50', 12/3, 15 amp, Neon Pink lighted end
COL02579-00-0A: 100', 12/3, 15 amp, Neon pink lighted end

COL2578SW000X: 50', 12/3, 15 amp, Neon Green lighted end
COL2579SW000X: 100', 12/3, 15amp, Neon green lighted end.



\$18.95

RYRNL3AAA-B: Rough Neck Headlamp
Roughneck Series
80 Lumen LED



\$9.95

RYDIYHL3AAA-B: Indestructible Headlamp
Indestructible Series
50 Lumen, 30 foot



Don't Forget Your Batteries Today!



Rayovac Ultra Pro: AAA - AA - C6 - D6 - 9V



\$19.95

AS6526: Armor3 Flashlight
Waterproof, Floats, 360 lumen work light, 160 lumen spotlight, impact tested to 65', Takes 3 AAA batteries.



AS6691: REBEL
Rechargeable dual purpose headlamp & hand held flashlight. **600 lumen** output

\$28.95



\$24.75

AS6444: Nebo DUO headlamp
250 Lumens, four light modes. setting spot beam, Flood, Red & Red Beacon flashing modes.

NEBO TOOLS



\$25.95

AS6783: SLYDE+ (2nd Gen) LED
400 Lumen LED Flashlight
400 Lumen LED C.O.B. Work light
Red light & Red Flashing.

TRADITIONAL



\$116



COL07605-88-00: 400W Temp Light
COL07625: Replacement Bulb



COL07549-88-02: 100' String Lighting
12/3 AWG cord, 150 Watts.... **\$139**
COL07548-88-02: 50' String Lighting
12/3 AWG cord, 150 Watts.... **\$81**
Upgrade to the LED bulb!

OVERHEAD LIGHTING



LED



COL71645SW: LED
14/3 SJTW Panel, 50' string 5
lights 4,000 Lumen
*Panels include top lighting
COL71655SW: LED 14/3,
SJTW, 100', 10 light 8000
Lumens

NEW Each Light Has Top Lights

LED



\$139

CEPCL100LEDG2: 100 Watt
high bay fixture. Feed
through daisy chain cord.
Tapered for better luminous
flux. 12,000 Lumens, 100w



\$109

COLT50078:
78W LED, low bay
light. 8200 Lumens



\$165

VT08-00405: 150W
LED Temporary area
work light, 18,000
lumens



VT08-00500: LED **\$84**

14/3 wire, 50' string 5
lights 5,000 Lumen

VT08-00501: LED **\$159**

14/3 wire, 100', 10-
light poly carbonate
lens over each module
10,000 Lumens



CEP97132: Temp Job Site String
Light, LED 66 W, 100ft, 10 lights
included, 650 lumens per panel,
50,000 hr lamp life. **\$288**
CEP97135: 50ft Light String
5 lights included. **\$149**

TRADITIONAL

DUAL TRIPOD LIGHTS

TASK LIGHTING



\$49

CEP5610-I:
1000W (500w ea)
Economy Import
Light, 16,000 lumens



\$132

CEP5710: 1000W (500
Watt ea) Quartz Heavy
Duty. 11,000 lumens



\$95

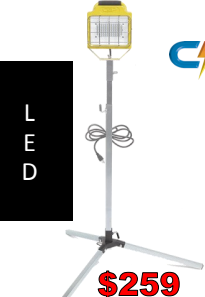
CEP5750: 500 Watt Heavy
Duty Quartz Halogen



\$14.95

CEP5125-I: "Stubby"
500 Watt 1 ft Height

LED



\$259

CEP9750: High output
LED light stand. 7' tripod
single. 5,500 lumens.



\$469

CEP9810: High output
LED light stand. 7'
tripod double.
11,000 lumens
(5,500L ea)

LED



\$138

CEP5220: LED Portable Work
Light. 4,000 lumens, low heat
output
CEP5270: With tripod stand,
4,000 lumens



\$153



\$79

COLL-1320: 779 lumen
Rechargeable LED



\$190

CEP9125: Stubby LED 5500
lumen w/ Magnetic back



COLL-1682SW: 2,948
Lumens, Tripod, 18/3,
5' cord, 54" tall, array
LED



\$121

TRADITIONAL

WOBBLIGHT

Wobblelight - Self righting work light.

\$285



WL175MH: 175 Watt/15,000
lumens Metal Halide
WL400MH: 400 Watt/40,000
lumen Metal Halide

\$344

LED



\$225

WL111206: JR LED 80 watt/ 9,000
lumens
WL111301LED: V2 LED 220 Watt/
15,000 lumens

\$378



Cordless Lighting

\$549

M12135-21HD: (9Ah) M18 Rocket
18V LED. Up to 7' tall. 3,000 lumens
of multi-directional light. Kit includes
Battery & charger



\$199

DTDCL079B: (20V) Max* Cordless
Tripod Light 3,000 Lumens 7' tall
(Bare Tool)





SU779765: SUMNER Pallet Jack. 27"X48" forks, 6,000lb capacity.

\$365



\$114



SU785000: Hold-E for 3/4" - 6" pipe



Ultra Clamp
SU781150: 2-6" pipe **\$169**
SU781170: 5-12" pipe **\$259**



Quick Pins - Flange Leveler
SU781235: Set of 2 **\$64**



ANCHORING EPOXY ADHESIVES



CURES AS LOW AS 14 DEGREES!!!

Simpson AT-XP Epoxy acrylic tie for cold weather and wet concrete conditions.

SNAT-XP10: 10oz fast pac kit.

SNAT-XP13: 13oz cartridge with nozzle

SNAT-XP30: 30oz cartridge w/nozzle

High Strength Epoxy Adhesive
For cracked and Uncracked concrete
Cures in 24 hrs at 70° & 72 hrs at 50°f
SNSET-XP10: 8.5oz w/ 2-nozzles
SNSET-XP22N: 22oz cartridge w/ nozzle

High Strength Epoxy Adhesive
For cracked and Uncracked concrete
Can be installed in water-saturated or water filled holes between 40° and 100°f
SNSET3G-22N: 22oz cartridge w/nozzle

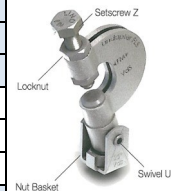
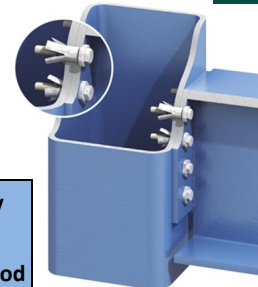
Hollo-Bolt™ by lindapter

The original Expansion Bolt for Structural Steel!!!

The Hollo-Bolt is a fast, cost effective connection for Hollow Structural Steel (HSS). The blind connection technique requires installation access to only one side of the steel for exceptional convenience

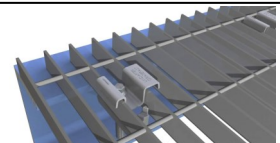
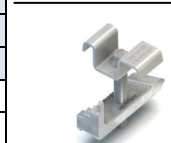
Edge has local inventory in the Northwest to support your jobs!

Generic Size	Product Code	Max. Clamping Range	Sleeve Diameter	Seismic Design Category Categories D,E,F *	
				LRFD Method Tensile (lb)	LRFD Method Shear (lb)
5/16"	LDLHBM08#1	1/4" - 7/8"	0.541"	3305	2675
	LDLHBM08#2	7/8" - 1-5/8"	0.541"	3305	2675
	LDLHBM08#3	1-5/8" - 2-3/8"	0.541"	3305	2675
3/8"	LDLHBM10#1	5/16" - 7/8"	0.699"	5485	4565
	LDLHBM10#2	7/8" - 1-5/8"	0.699"	5485	4565
	LDLHBM10#3	1-5/8" - 2-3/8"	0.699"	5485	4565
1/2"	LDLHBM12#1	5/16" - 1"	0.778"	7465	6250
	LDLHBM12#2	1" - 1-13/16"	0.778"	7465	6250
	LDLHBM12#3	1-13/16" - 2-3/4"	0.778"	7465	6250
5/8"	LDLHBM16#1	1/2" - 1-1/8"	1.014"	13330	9780
	LDLHBM16#2	1-1/8" - 2"	1.014"	13330	9780
	LDLHBM16#3	2" - 2-13/16"	1.014"	13330	9780
3/4"	LDLHBM20#1	1/2" - 1-5/16"	1.289"	19355	15330
	LDLHBM20#2	1-5/16" - 2-3/8"	1.289"	19355	15330
	LDLHBM20#3	2-3/8" - 3-3/8"	1.289"	19355	15330

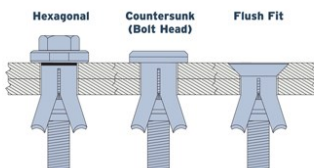


LDLFLS037: Type FLS beam flange: Beam flange clamp with swivel unit. For parallel and sloping flanges. Supplied with grade 8.8 setscrew for secure grip

- Accommodates **compound angles**
- Droop all-thread straight, even with **sloped roofs**



LDLGF037: Grating fixing for rectangular open bar grating with cast main body giving superior clamping force. Vibration & shock resistant. No welding or drilling. No hot work permits. Compatible with common grating products.

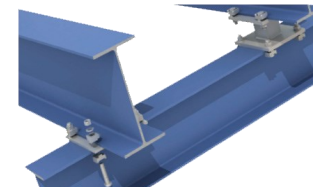
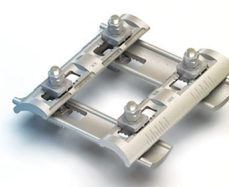


Hollo-Bolt Options

Hollo-Bolts are available in a range of head types for a variety of architectural finishes!

* Seismic Design category A-C have higher values

Available in Zinc, Hot-Dipped, Stainless and other finishes



Ask About Custom Beam/Girder Clamps!



Edge is a Certified Ridgid Warranty Service Center

We stock and repair lines, cutters, augers and nozzles



Find out about SeeSnake's
&
Diagnostic Equipment

Today's Cold Weather Tool Tip

Avoid freezing your pneumatic tools with our cold weather air oil.

PCOATL004W: 4 oz.

Cold Weather Equipment Tips from Edge's Expert Technicians

1. If you are storing any equipment for the winter, don't forget to drain the gas and run all the excess fuel from the carburetor.
2. Putting oil in your tools before AND after each days use will prolong the life of your investments.



K400 Drain Cleaner T2

For 1 1/2" to 4" Drain Lines. Compact user friendly size and design w/ auto-feed

Motor: 115Volt, 1/3 HP

Line Capacity: 1 1/2" to 4" pipe
Up to 100 ft

Item #:.....RI52363



K50 Sectional Machine

Sectional drain cleaner for 1-1/4" to 4" drain lines. 3 cable size options 5/16", 3/8" & 5/8". Up to 100' of line.

Item #:.....RI58960



K3800 Drain Cleaner

For 3/4" to 4" Drain Lines. Motor automatically gears down when cable hits blockage.

Motor: 1/12 HP, 240RPM

Line Capacity: 3/4" to 4" pipe
Up to 100 ft

Item #:.....RI53117



SeeSnake® Mini Video Inspection System

Self leveling camera head delivers crisp, clear always upright in-pipe images. 200' cable length, 1.5" to 8" line capacity

Item #:.....RI48488



SeeSnake® Standard Inspection System

Self leveling camera head delivers crisp, clear always upright in-pipe images. 325' cable length, 2" to 12" line capacity.

Item #:.....RI13988



SeeSnake® CS10 Monitor

12.1" daylight readable LCD display allows you to easily monitor and record inspections in bright outdoor environments.

Item #:.....RI39338



SEEKTECH SR-20 Locator Lightweight rugged receiver that provides all the info needed for faster, more accurate locates. Line tracer and underground utility locator.

Item#.....RI21893



NaviTrack Scout Locator Designed to solve the most demanding remote transmitter (sonde) locates using multi-directional technology. Underground pipe and cable location device

Item#.....RI19238



SPOKANE
(509) 535-9841
(800) 348-4808

BILLINGS
(406) 248-7196

YAKIMA
(509) 248-1144

GILLETTE
(307) 682-8522

SEATTLE
(206) 764-9488

BOISE
(208) 377-0158

EUGENE
(541) 342-3641

IDAHO FALLS
(208) 522-7082

MEDFORD
(541) 779-0187



1503 E. Riverside
 P.O. Box 3437
 Spokane, Washington 99220

PRESORTED
 STANDARD
 U.S. POSTAGE
PAID
 Spokane, WA 99201
 Permit No. 888

HANDIFOAM[®] EXTREME

LOW-PRESSURE ONE-COMPONENT POLYURETHANE FOAM SEALANT (OCF)

FOP30120:

HandiFoam[®] Extreme low-pressure, one-component, polyurethane foam sealant is a moisture cured, multi-purpose, polyurethane foam sealant formulated specifically for use in **extreme temperatures and low humidity conditions**. This will cure in outdoor temperatures **as low as 0°F (-18°C)**. HandiFoam Extreme is designed for sealing small cracks and voids, preventing air and moisture infiltration.



FOP30120



FOP61039: Handi Gun 7" Steel/Polymer Dispenser



FOP61050: Handi Gun 7" Economy Dispenser



FOP10083: Handi Foam Multi-Purpose cleaner 12oz



*Also available in bulk supply.
 Ask you Edge Rep for more information on which products are available in bulk.*



FOP30192: Handi Foam Fire Block cured sealant 24oz straw foam



FOP30272: Handi Foam Window & Door Sealant 24oz gun foam



FOP30271: Handi Foam Window & Door Sealant 24oz straw foam



FOP30290: Handi Foam Sealant 29oz Gun Foam



DEWALT DEALS VALID THROUGH DEC 31, 2019



BUY 2 BARE TOOLS GET A FREE STARTER KIT!

Includes 2 - 5Ah Batteries, Charger & Bag



\$139

DTDCF887B: 1/4" 3-Speed Impact Driver



\$139

DTDCF880B: 1/2" Impact Wrench



\$129

DTDCG412B: 4-1/2" to 5" Grinder



\$159

DTDCD996B: Brushless 3-Speed Hammer Drill Driver



\$169

DTDCS570B: 7-1/4" Circular saw



\$129

DTDCS551B: Drywall Cut-out Tool



\$159

DTDCS331B: Jig Saw



\$109

DTDCC0201B: Air Inflator



\$179

DTDCG413B: 4-1/2" Grinder w/ Paddle Switch



\$149

DTDCCS620B: MAX XR Compact 12" Chainsaw



\$139

DTDCF620B: Brushless Drywall Screwgun



\$129

DTDCS391B: 6-1/2" Circular Saw



DTDCB205-2CK:

Free w/ 2 bare tools



\$139

DTDCS355B: Oscillating Multi-Tool



\$179

DTDCGG571B: Grease Gun



\$129

DTDCS380B: Recip Saw



\$199

DTDCF894B: 1/2" Mid-Range impact wrench w/ Detent Pin



\$289

DTDCF897B: 3/4" High Torque Impact Wrench w/ Hog Ring Pin



\$249

DTDCF899B: 1/2" High Torque Impact Wrench w/ Detent Pin



\$199

DTDCF622B: Versa-Clutch adj torque Screwgun



\$229

DTDCS491B: 18G Swivel Head Shears



\$229

DTDCS371B: Band Saw Cuts up to 2" SCH 40 Pipe



\$189

DTDCL074: All-Purpose Light. Up to 5,000 lumens and 11 hrs runtime.



\$199

DTDCL079B: 3000 Lumen Cordless Tripod Light



\$299

DTDCH273B: 1" L-Shape SDS Plus Rotary Hammer



\$199

DTDCH133B: 1" D-handle Rotary Hammer

BUY the DTDCK299P2 Kit and get your choice of 1 Bare tool shown on the right!!

Call for Price

DTDCK299P2: 2 Brushless Drill Combo Kit. Includes DTDCF887 Brushless Impact Driver, DTDCD996 Brushless Hammer Drill/Driver, (2) DTDCB205 5.0Ah Batteries, Charger and Case.



DTDCCS620B Chain Saw



DTDCF887B Impact



DTDCH133B Roto-Hammer



DTDCG412B Grinder



DEWALT

FLEXVOLT

OUR
**MOST
ADVANCED
SYSTEM**

EDGE'S MISSION

To provide contractors and professionals with cutting edge tools, efficient solutions, and comprehensive services that help build and sustain vibrant communities



DTDCS577X1: 60 Volt MAX 7-1/4" Worm Drive Saw with 9Ah Battery, Charger and Case. Bevel capacity of 53° with stops at 45° & 22.5°. Achieves 2-7/16" depth of cut at 90°.



DTDCS388T2: 60 Volt MAX Brushless Recip Saw 2 x 6.0Ah Battery Kit. Keyless lever-action clamp for quick blade changes. 1-1/8" stroke length



DTDCD460T2: 60 Volt MAX Brushless Stud and Joist drill 2 x 6.0Ah battery kit. Brushless motor with E-Clutch technology.



DTDCG414T2: 60 Volt MAX 4-1/2" TO 6" angle grinder kit w/ 2 x 6.0Ah batteries. For high powered cutting and grinding of structural steel, rebar, metal pipe, steel and concrete.



DTDCDH481X2: 60 Volt MAX Combination Hammer Kit. 1-9/16" SDS Max w/ 2 x 9.0Ah Batteries. 6.1 Joules of impact, E-Clutch for maximum control in bind-up situations. Includes Anti Vibration Shocks.

60V Flex Volt

The Power of Corded in a Cordless Tool!

DeWalt Deals Valid Through Dec 31st, 2019