



EDGE CONSTRUCTION SUPPLY'S MISSION

To provide contractors and professionals with cutting edge tools,
efficient solutions, and comprehensive services that help build
and sustain vibrant communities

Sept 25 - Nov 6 2020

Get a FREE Dust Extractor With Every Rotary Hammer Below!

WHILE SUPPLIES LAST!



\$519

FREE

DTDCH273P2: 20-volt MAX XR 1" SDS Plus Brushless L-Shape Rotary Hammer Kit. Includes, Hammer, 2 batteries, charger and case. PLUS A FREE **DTDWH303DH** Dust Extractor



\$909

FREE

DTDCH733X2: 60V Flexvolt MAX 1-7/8" SDS Rotary Hammer kit. Includes Tool, (2) 60V Batteries, charger and case. Plus FREE **DTDWH050K** dust extractor/hole cleaner



\$699

FREE

DTDCH293X2: 20V MAX XR SDS-plus 1-1/8" cordless brushless L-Shape Rotary Hammer Includes Tool, (2) 9.0Ah 60V Batteries, charger and case. Plus FREE **DTDWH304DH**



\$299

FREE

DTDCH133M2: 20-volt MAX XR 1" SDS Plus D-Handle Brushless Rotary Hammer Kit. Includes Hammer, two 4Ah batteries, Charger and case. Plus FREE **DTD25301D** dust extractor.



\$425

FREE

DTD25481K: SDS MAX Combination Corded Rotary Hammer / Drill kit. Plus FREE **DTDWH050K** dust extractor / hole cleaner.



\$299

FREE

DTD25333K: SDS Plus 1-1/8" Corded Rotary Hammer Kit. Plus a FREE **DTD25301D** dust extractor.



\$1499



FREE

DTD25980K: 68lb. 1-1/8" Hex Pavement Breaker with Hammer Truck and steel. Plus a FREE **DTDWH052K** Large Hammer Chiseling Dust Extractor System



\$872

FREE

DTD25901K: SDS MAX Corded Demolition Hammer with shocks. Chipping, Demo and Chasing applications. (22lbs). Plus a FREE **DTDWH053K** dust extractor.



\$219

FREE

DTD25263K: SDS Plus 1-1/8" Corded D-Handle Rotary Hammer Kit. Plus a FREE **DTD25301K** dust extractor.



\$339

DTDWV010: 8-Gallon HEPA Dust Extractor with auto filter cleaning.



\$509

DTDWV012: 10-Gallon HEPA Dust Extractor with auto filter cleaning.



\$429

FLEXVOLT 60V MAX DUST EXTRACTOR DTDVCV585B: 2-Gallon Cordless HEPA Dust Extractor with auto filter cleaning. Efficient and portable way to achieve OSHA Table 1 compliance on the jobsite. **Wireless Tool Control™** with remote allowing you to activate the extractor from the tool at a distance.

Bare tool, no battery included

SPOKANE

1503 E. Riverside Ave.
Spokane, WA 99202
(509) 535-9841
(800) 348-4808
(509) 534-3139 (Fax)

SEATTLE

18161 Segale Park Dr B.
Tukwila, WA 98188
(206) 764-9488
(800) 481-TOOL
(206) 764-9487 (Fax)

YAKIMA

812 E. Mead
Yakima, WA 98903
(509) 248-1144
(800) 243-5582
(509) 575-4696 (Fax)

EUGENE

490 S. Bertelsen
Eugene, OR 97402
(541) 342-3641
(800) 944-0165
(541) 343-1753 (Fax)

MEDFORD

1789 Sage Rd.
Medford, OR 97501
(541) 779-0187
(800) 871-3919
(541) 773-4599 (Fax)

BILLINGS

120 Moore Lane
Billings, MT 59101
(406) 248-7196
(800) 272-7196
(406) 248-7269 (Fax)

BOISE

2000 Century Way
Boise, ID 83709
(208) 377-0158
(800) 528-5118
(208) 377-0978 (Fax)

IDAHO FALLS

760 W. Broadway
Idaho Falls, ID 83402
(208) 522-7082
(208) 529-5456 (Fax)

DEWALT
FLEXVOLT
OUR
MOST
ADVANCED
SYSTEM



60V^{MAX}
LITHIUM ION

**BARE
TOOL
SPECIALS**

FREE 60V - 6Ah Battery with every bare tool!

All New Designs!!!



\$199

DTDCG418B: FLEXVOLT 60V MAX
4-1/2—6" angle grinder with kickback



\$199

DTDCS389B: FLEXVOLT 60V MAX
Reciprocating Saw.



\$199

DTDCS578B: FLEXVOLT 60V MAX
7-1/4" Circular Saw



\$399

DTDCD470B: FLEXVOLT 60V MAX
Right Angle Stud & Joist Drill with
chuck key and E-Clutch system



\$399

DTDCD471B: FLEXVOLT 60V MAX
Right Angle Stud & Joist Drill with
quick-change and E-Clutch system



DTDCB606: FLEXVOLT 20v/60V MAX
6Ah battery. FREE with purchase of
any of the 60V Tools in this section
(\$149 value)



\$1699

DTDC700X2: 60V MAX Cordless Pipe Threader Kit.
For 1/2" - 2" black iron pipe, rigid conduit, and more.
Includes, Threader, 2 - 60V 9.0Ah batteries, Charger,
and case. **COMPATIBLE WITH RIDGID 12R STYLE DIE HEADS**



\$229

DTDC299P2: 2 Brushless Drill Combo Kit. Includes
DTDCF887 Brushless Impact Driver, DTDCD996 Brushless
Hammer Drill/Driver, (2) DTDCB205 5.0Ah Batteries,
Charger and Case.



\$699

DTDCS690X2: 60V MAX 9" Brushless Cut-Off
Saw Kit. Cuts up to 3-1/4 deep for concrete,
pavestones, steel & rebar. Includes: 1 FLEXVOLT
Diamond Wheel & 1 FLEXVOLT Cut-Off Wheel, 2 -
9Ah 20/60V batteries, & fast charger.



DTDWAFV8900: 9"
Diamond Cutting Wheel
Regular \$69
\$45ea



\$449 WHILE SUPPLIES LAST!

DTDC263R2DH: 20V MAX SDS Plus, 1-1/8" D-Handle
Rotary Hammer with onboard Dust Extraction Kit. Includes,
Hammer, Integrated Dust Extraction System, two 6Ah 20V
Batteries, Charger and Case.

WHILE SUPPLIES LAST!

WHILE SUPPLIES LAST!



\$99

DTDCD996B: Brushless 3-Speed Hammer Drill Driver



\$79

DTDCS391B: 6-1/2" Circular Saw



\$139

DTDCS570B: 7-1/4" Circular saw



\$89

DTDCF880B: 1/2" Impact Wrench



\$89

DTDCF883B: 3/8" Impact with Hog Ring



\$89

DTDCF887B: 1/4" 3-Speed Impact Driver



\$249

DTDCF897B: 3/4" High Torque Impact Wrench w/ Hog Ring Pin



\$199

DTDCF899B: 1/2" High Torque Impact Wrench w/ Detent Pin



\$289

DTDCN692B: 30° Paper Collated Framing Nailer



\$99

DTDCS331B: Jig Saw



\$79

DTDCS387B: Compact recip saw



\$79

DTDCS380B: Recip Saw



\$139

DTDCH133B: 1" D-Handle Rotary Hammer



\$279

DTDCH273B: 1" SDS Plus Brushless L-Shape Concrete &



\$179

DTDCS371B: Band Saw Cuts up to 2" SCH 40 Pipe



\$129

DTDCGG571B: Grease Gun



\$179

DTDCS491B: 18G Swivel Head Shears



\$199

DTDCS494B: 14G Swivel Head Double Cut Shears



\$199

DTDCS496B: 18G Swivel Head Offset Shears



\$129

DTDCW600B: Brushless Cordless Compact Router



\$89

DTDCS551B: Drywall Cut-out Tool



\$129

DTDCG426B: 1-1/2" Variable speed Die Grinder



\$69

DTDCW200B: 1/4 Sheet Sander



\$89

DTDCW210B: Brushless Orbital Sander



\$139

DTDCLO74: All-purpose cordless work light



\$59

DTDCES11B: 11" Corded / Cordless Fan



\$129

DTDCV581H: 2-Gallon, Wet/Dry, Cordless or Corded Vacuum



\$69

DTDCV517B: 1/2-Gallon, Wet/Dry, Cordless Vacuum



\$139

DTDCLO79B: 3000 Lumen Cordless Tripod Light

While Supplies Last!

LIMITED INVENTORY!

\$10



DTDCCK019: Tool Bag
Regular \$39



\$25

DTDCB115: Battery Charger
Regular \$75



DTDCB205: XR 20v, 5Ah battery
Regular \$119



BUY 1 DTDCB205 for ...\$79
BUY 5 + FOR..... \$72 ea
Buy 12 + FOR\$64 ea

While Supplies Last!

CONCRETE TOOLS

\$11.50



**Square Point Shovel
#UF40-184**

\$11.50



**Round Point Shovel
#UF40-191**

UnionTools



**RazorBack Concrete Rake, Rebar Hook,
with wood handle
#UF83-154**



**Commercial Duty Hoses
#UF4008300A: 50'
#UF4008500A: 100'**

**7" RazorBack Sidewalk/Ice Scraper
#UF78-202**

\$32



\$15.95

IR1932877: Strait-Line Mach 6 Chalk Reel 100'. 6:1 gear ratio rewinds line 6X faster. 8 oz.



\$22.50

IR1932878: Strait-Line Layout Pro 100'. 2:1 gear ratio rewinds line 2X faster. 10 oz.



IR65102: 5lb Permanent marking chalk, (All Colors Available) **\$8.95**



\$11.15

IR1932883: Strait-Line Speed Reel & Chalk Combo Kit 100'. 3:1 gear ratio rewinds line 3X faster.



\$8.75

STL25462 (shown)
500' Stringliner Line Reel Pink Reloadable
STL25459: Orange
STL25468: Green



\$1.55

IR64902: 8oz standard chalk (All Colors Available)

**IRWIN
TOOLS**



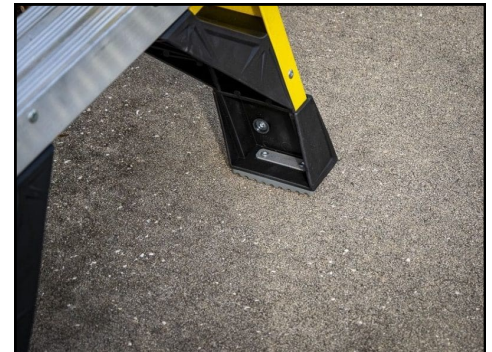
INTEGRATED LEANING TOP

Includes tool bins and magnet with non-marring rubber.



ONE HAND LOCK MECHANISM

Single hand lock adjustment.



EDGE 360 BRACING

Sturdy foot peg bracing for maximum stability and non-marring rubber foot pads to protect the floor surface.



\$139

WELDP7306: LEANSAFE X3 Professional 3 in 1 multi-purpose ladder.

- 375lb load capacity. Type 1AA duty rating
- Stepladder
- Leaning Ladder
- Straight Ladder
- Seamless Position Change
- One hand lock adjustment
- Versatile leaning top
- Non-marring rubber top protects work surfaces
- Compact rear rails fits between framing studs

SPECIFICATIONS

MODEL NO.	STEPLADDER HEIGHT	STEPLADDER REACH	STRAIGHT LADDER HEIGHT	STRAIGHT LADDER REACH	APPROX. PRODUCT LENGTH	APPROX. PRODUCT WIDTH
WELDP7306	6ft	10ft	9ft	13ft	72.5in	24in

**375lb
LOAD CAPACITY**

Type 1AA Duty Rating

- INCREASE PRODUCTIVITY
- Seamless Position Change
 - One Hand Lock Adjustment
 - Versatile Leaning Top





\$2499

**GET UP TO
A 4" CORE
BIT FREE!**

DP85327: M-1 Core Bore motor with stand. 14" bit capacity, 20 amp, 3-speed motor, Vacuum/Anchor combo base and stand.



Turbo Cup Grinders

DP17846: 4" Turbo (5/8-11" Arbor)

DP16410: 7" Turbo (5/8-11" Arbor)

Your Choice of 1 w/ purchase

DP14369: 1" Core Bit
DP05434: 1-1/2" Core Bit
DP05520: 2" Core Bit

DP05649: 3" Core Bit
DP05748: 4" Core Bit



\$1699

**GET UP TO
A 2" CORE
BIT FREE!**

DP4244017: WEKS DK12 Hand held motor. 3" bit capacity (6" capacity with stand). 14 amp, 3-speed motor W/ Thermal overload protection.



Double Segmented Cup Grinders

DP07429: 4" Double (5/8-11" Arbor)

DP07434: 7" Double (5/8-11" Arbor)

SET-XP & SET-3G

Epoxy anchoring adhesive is a high-strength formula for anchoring and doweling in cracked and Un-cracked concrete and masonry applications.

BUY 20 TUBES - GET A FREE EPOXY GUN!



**SIMPSON
Strong-Tie**



Quick Cure Times

40° - 120 minutes
50° - 75 minutes
60° - 50 minutes
70° - 35 minutes
90° - 25 minutes
100° - 15 minutes

SET-XP: 24hr cure time at 70°, 72 hr at 50°. Suitable for use in dry or water-saturated concrete
SNSET-XP22N: 22oz w/ 1 nozzle

SET-3G: Can be specified for dry or water-saturated conditions in temps ranging from -40° to 176°. Additionally can be installed in water-filled holes in temps between 40° & 100°
SNSET3G-22N: 22oz w/ 1 nozzle



**FREE w/ the purchase
(\$87 value)
of 20 tubes!**

DUAL CARTRIDGE GUN

SNEDT22S: 22oz epoxy gun



Hole Cleaning Brushes

SNETB4: 1/2" x 3"
SNETB6: 3/4" x 4"
SNETB8: 1" x 4"
SNETB10: 1-1/4" x 4"

Titen HD® Heavy-Duty Screw Anchor



Key Features

The original high-strength screw anchor for use in **cracked** and **un-cracked** concrete, as well as **un-cracked masonry**.

- Code listed under IBC/IRC in accordance with ICC-ES AC193 and ACI 355.2 for cracked and un-cracked concrete per ICC-ES ESR-2713
- Code listed under IBC/IRC in accordance with ICC-ES AC106 for masonry per ICC-ES ESR-1056
- Qualified for static and seismic loading conditions
- Thread design undercuts to efficiently transfer the load to the base material
- Standard fractional sizes

**SIMPSON
Strong-Tie**

SNTHDB25178H: 1/4" x 1-7/8" (100bx)
SNTHD37212H: 3/8" x 2-1/2" (50bx)
SNTHDB25234H: 1/4" x 2-3/4" (50bx)
SNTHDB25300H: 1/4" x 3" (50bx)
SNTHD37300H: 3/8" x 3" (50bx)
SNTHD50300H: 1/2" x 3" (25bx)
SNTHDB25400H: 1/4" x 4" (50bx)

SNTHD37400H: 3/8" x 4" (50bx)
SNTHD50400H: 1/2" x 4" (20bx)
SNTHD37500H: 3/8" x 5" (50bx)
SNTHD50500H: 1/2" x 5" (20bx)
SNTHDB62500H: 5/8" x 5" (10bx)
SNTHD75600H: 3/4" x 6" (5bx)
SNTHDB62800H: 5/8" x 8" (10bx)
SNTHD75812H: 3/4" x 8-1/2" (5bx)

Call For Special Pricing!



\$279ea

MOTRDU4100:

- 10 Channel UHF
- RDX 4-Watt transmit power
- 2400 mAh Lithium Ion Battery
- Programmable radio
- Each radio comes with a single charger
- 2 year replacement warranty

End User Rebate!

Valid Sept 1—Dec 31, 2020

MOTHKLN4606:
Clip on external
Speaker / Mic



Buy **6** same-series radios
Get **6** Audio Accessories **FREE**

PLUS: Buy **12** same-series radios

Get a Multi-unit Charger **FREE**



MOTRLN6309: Multi Unit Charger

ASK YOUR EDGE SALES REP FOR INSTRUCTION ON HOW TO CLAIM YOUR
FREE PRODUCT FROM MOTOROLA

Full Zip or Hoodie your choice at this price



Majestic Hi-Viz Hooded Sweatshirt
#MJ75-5327-(M, L, XL & XXL)
ANSI Class 3 Sweatshirt with hood, Ribbed cuffs/waist & 2" reflective strip

\$35



Majestic Hi-Viz Zip-Front Hooded Sweatshirt
#MJ75-5325-(M, L, XL, XXL)
ANSI Class 3 Sweatshirt with hood, Ribbed cuffs/waist & 2" reflective strip

2020 JACKETS AVAILABLE FOR PRE-ORDER NOW!



\$69

PIP Class 3 Rip Stop Bomber Jacket
#PIP333-1770 (M-XXL)
Hi-Visibility Rip Stop Bomber Jacket, ANSI 107 Class 3.
Features:

- Removable Liner
- Adjustable Cuffs
- "D" ring harness pass through
- Hide-a-way Hood



\$39

PIP Type R Class 3 Black Bottom Bomber Jacket
#PIP333-1740 (M-XXL)
Hi-Visibility Quilted built-in-liner Bomber Jacket, ANSI 107 Class 3.
Features:

- Waterproof polyester shell w/ tapes seams
- Built-in quilted insulation
- 2" silver reflective tape
- Black bottom, collar & cuffs help hide dirt

The most **Innovative** cold weather safety work jacket on the market



GU15178: Multi directional base plate. Allows for 4 G-Rail installation locations, integral toeboard attachments, durable, powder coated steel. **92lbs.** Guardrail available in 6', 8', 10' & 12' sections.



GU15170: Parapet Clamp Guardrail System. Fits a wide range of parapets, Set-up OSHA compliant guardrail system.

These available
← upon request →



GU15500: C-Slab Grabber. Fits a wide range of concrete slabs, Set-up OSHA compliant guardrail system.

TIE DOWN

ZIP RAIL COMPLETE SET
TIE70736: 350 Foot Complete Kit
Includes:

- 36 Compression & Gravel Stop Brackets
- 64 - 10' Zip Rail, Yellow TS22 Coated
- 8 Adjustable Zip Rail 5' - 8'
- 4 Adjustable Zip Rail 32" - 48"
- 36 Zip Rail Stanchions, yellow
- 12 Corner bracket assembly, yellow
- 36 Safety locking pins
- 1 Zip Rail Stack Container

Ask Your Edge Rep For More Information!

TIE DOWN
MANUFACTURING INGENUITY

NEW PRODUCT

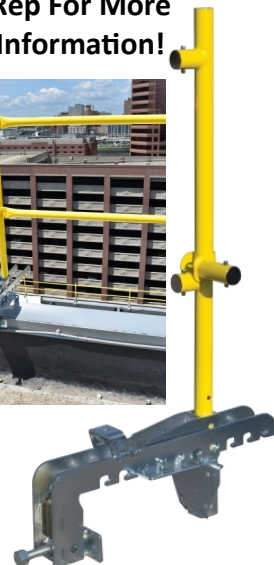
NEW GAURDRAIL SYSTEM 200 LB TESTED AND APPROVED

Yellow Powder Coated Guardrails

TIE70756: Base **ONLY 58lbs**

TIE70759: 7-1/2' Guardrail

- 3-hole base - (58 lbs)
- Nests and stacks easily
- Zip Base offers superior resistance to impact loads
- Guardrails Available in 5', 7-1/2', & 10' lengths
- Exceeds all OSHA Load Requirements
- Manufactured 100% in USA



SPOKANE

(509) 535-9841
(800) 348-4808

SEATTLE

(206) 764-9488
(800) 481-8665

YAKIMA

(509) 248-1144
(800) 243-5582

EUGENE

(541) 342-3641
(800) 944-0165

MEDFORD

(541) 779-0187
(800) 871-3919

BILLINGS

(406) 248-7196
(800) 272-7196

BOISE

(208) 377-0158
(800) 528-5118

IDAHO FALLS

(208) 522-7082



FREE Tape Seamer With Every Pallet of Builder Board

SFBLD38100: Builder Board, 38" x 100'
(16 Rolls per Pallet)



SFBLDAPP: Builder Board Tape Seamer
(\$200 Value)

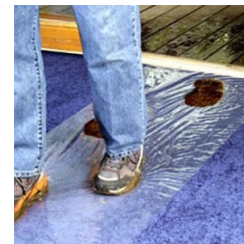


SFCNS2548: Corner Shield
2.5"x2.5X"x48" Long
(Sold in package of 24)



Duct Shield

SFDCR324200B: 24"x200'
SFDCR336200B: 36"x200'
SFDCR348200B: 48"x200'



Reverse Wound



SFCS24200W: Carpet Shield 24"x200'
SFCS36200W: Carpet Shield 36"x200'
SFCS36500W: Carpet Shield 36"x500'



SFES6048C: Casing Cover protects door frames from accidental scratches.

Find these specialty items
and more by Surface Shield
to protect many different
surface types
during construction!



SFRBSA-36: Stair Armor
34"x19" sold per bundle of 6.

<u>SPOKANE</u>	<u>SEATTLE</u>	<u>YAKIMA</u>	<u>EUGENE</u>	<u>MEDFORD</u>	<u>BILLINGS</u>	<u>BOISE</u>	<u>IDAHO FALLS</u>
1503 E. Riverside Ave. Spokane, WA 99202 (509) 535-9841 (800) 348-4808 (509) 534-3139 (Fax)	18161 Segale Park Dr B. Tukwila, WA 98188 (206) 764-9488 (800) 481-TOOL (206) 764-9487 (Fax)	812 E. Mead Yakima, WA 98903 (509) 248-1144 (800) 243-5582 (509) 575-4696 (Fax)	490 S. Bertelsen Eugene, OR 97402 (541) 342-3641 (800) 944-0165 (541) 343-1753 (Fax)	1789 Sage Rd. Medford, OR 97501 (541) 779-0187 (800) 871-3919 (541) 773-4599 (Fax)	120 Moore Lane Billings, MT 59101 (406) 248-7196 (800) 272-7196 (406) 248-7269 (Fax)	2000 Century Way Boise, ID 83709 (208) 377-0158 (800) 528-5118 (208) 377-0978 (Fax)	760 W. Broadway Idaho Falls, ID 83402 (208) 522-7082 (208) 529-5456 (Fax)



1503 E. Riverside
P.O. Box 3437
Spokane, Washington 99220

PRESORTED
STANDARD
U.S. POSTAGE
PAID
Spokane, WA 99201
Permit No. 888



\$634

ONLY
59 Decibels

NK302004234

Attix Alto 50. 12-gallon wet/dry commercial Vacuum. Low working sound level, washable PET fleece filter with minimum 99.9% filtration efficiency. Includes: Hose, curved wand, extension tube, floor nozzle, washable fleece liner.



\$541

NK302004230

Attix Alto 30. 8-gallon wet/dry commercial Vacuum with superior suction power. Low working sound level, washable PET fleece filter with minimum 99.9% filtration efficiency. Includes: Hose, wand, extension tube, floor nozzle combo, Crevice nozzle, brush nozzle, universal nozzle, tool adapter, & washable fleece liner.

Compact
Design



\$280

NK107406622

Aero 6.6-Gallon compact wet/dry vacuum with filter cleaning and ergonomic design. Includes: hose, extension tube, floor nozzle (wet/dry), crevice nozzle, universal nozzle, tool holder, washable filter/PET, tool adapter w/ regulator, suction brush nozzle.



NK107402706
Wet/dry floor nozzle



NK302001095
HEPA filter



NK302002404
4-Pack filter bags for Aero model



NK302000447
Curved extension wand for 1-1/2" dia hose



NK302004000
5-Pack filter bags for Attix models



Hand Sanitizer

#BSAVHS6: 6oz bottle

\$7.99



Gloves
MG5049 (L,M,XL) 11 mil latex

\$15/bx



\$10.99

ST33-725: 1-1/4" x 25' Fat Max
tape measure with Blade Armor

SPOKANE	SEATTLE	YAKIMA	EUGENE	MEDFORD	BILLINGS	BOISE	IDAHO FALLS
1503 E. Riverside Ave. Spokane, WA 99202 (509) 535-9841 (800) 348-4808 (509) 534-3139 (Fax)	18161 Segale Park Dr B. Tukwila, WA 98188 (206) 764-9488 (800) 481-TOOL (206) 764-9487 (Fax)	812 E. Mead Yakima, WA 98903 (509) 248-1144 (800) 243-5582 (509) 575-4696 (Fax)	490 S. Bertelsen Eugene, OR 97402 (541) 342-3641 (800) 944-0165 (541) 343-1753 (Fax)	1789 Sage Rd. Medford, OR 97501 (541) 779-0187 (800) 871-3919 (541) 773-4599 (Fax)	120 Moore Lane Billings, MT 59101 (406) 248-7196 (800) 272-7196 (406) 248-7269 (Fax)	2000 Century Way Boise, ID 83709 (208) 377-0158 (800) 528-5118 (208) 377-0978 (Fax)	760 W. Broadway Idaho Falls, ID 83402 (208) 522-7082 (208) 529-5456 (Fax)