



Construction Supply

EDGE CONSTRUCTION SUPPLY'S PURPOSE

To help build and sustain vibrant communities

APRIL 1 - MAY 30, 2022

FREE 5 Ah BATTERY WHEN YOU BUY 1 SELECT TOOL BELOW

From this section



\$202

DTDCS373B: Lithium Ion metal cutting circ saw



\$419

DTDCH293B: 1-1/8" SDS Plus Brushless L-Shape Concrete & Masonry Rotary Hammer



\$299

DTDCF897B: 3/4" High Torque Impact Wrench w/ Hog Ring Pin



\$319

DTDCS374B: Deep Cut Band Saw Cuts up to 5" x 4-3/4" rectangular and 4" round.



DTDCB205: 20V 5Ah Battery (Available for purchase for \$77 ea)



\$219

DTDCH133B: 1" D-Handle Rotary Hammer



\$269

DTDCS496B: 18G Swivel Head Offset Shears



\$239

DTDCS491B: 18G Swivel Head Shears



\$229

DTDCF622B: 20v MAX XR Adjustable torque drywall screwgun



\$198

DTDCF890B: 3/8" compact Impact wrench



\$189

DTDCS367B: MAX XR Compact Recip Saw



\$129

DTDCG412B: 4-1/2" to 5" Grinder



\$169

DTDCS331B: Jig Saw



\$259

DTDCS371B: Band Saw Cuts up to 2" SCH 40 Pipe



DTDCE531B: Pencil vibrator. 4ft flexible shaft, 1-1/8" vibrator diameter, 14,000 VFM under load. **\$330**



\$229

DTDCL079B: 20V, 3000 Lumen Tripod Light. Highly durable. (Tool Only)

FREE 5 Ah SECTION



FREE

DTDCB204: 20V 4Ah Battery (\$73 Value)



\$199

DTDCE560B: 10oz Caulk gun



\$149

DTDCS551B: Drywall Cut-out Tool



\$199

DTDCG426B: 1-1/2" Variable speed die grinder



\$159

DTDCS356B: 3-spd oscillating multi-tool



\$129

DTDCS380B: Recip Saw



\$129

DTDCV517B: 1/2-Gallon, Wet/Dry, Cordless Vacuum



\$199

DTDCL074: 20V MAX LED work light



\$179

DTDCV581H: 2-Gallon, Wet/Dry, Cordless or Coded Vacuum



\$139

DTDCE512B: Jobsite Fan

FREE 4 Ah SECTION

SALE \$299
Was \$399 - Save \$100



DTDCK299P2: 20V MAX Brushless Cordless 2-tool 1/2" Hammer drill/driver & 1/4" impact

BUY \$100 IN CARBIDE - GET 10% DISCOUNT
BUY \$300 IN CARBIDE - GET 15% DISCOUNT



\$159



DTDWH050K: Large hammer drilling dust extraction system.
(*\$185 Value*)

\$442



DTD25481K: SDS MAX 40mm Rotary Hammer/Drill Combination Kit

\$229



DTD25263K: SDS-Plus 1-1/8" D-Handle concrete/masonry Rotary hammer

\$494



DTD25832K: SDS MAX Corded Chipping Hammer

\$1,699



DTD25980K: 1-1/8" 80lb Demolition Pavement breaker with Hammer truck and steel. Includes Bull point chisel, 1" Cold chisel, & 3" Wide chisel



\$549

DTDCH273P2: 20V MAX SDS 1" Rotary Hammer Drill Kit
(*2.1 joules impact energy*)



\$629

DTDCH263R2DH: 20V MAX XR SDS PLUS 1-1/8" D-handle Rotary Hammer Drill Kit w/ onboard dust extractor
(*3 joules of impact energy*)



\$369

DTDCH133M2: 20V MAX XR SDS PLUS 1" D-handle Brushless Rotary Hammer Drill, Drill, or Chip Kit w/ 2 batteries.
(*2.6 joules impact energy*)



\$749

DTDCH293X2: 20V MAX XR SDS 1-1/8" Rotary Hammer L-Shape Drill Kit w/ 2 - 60V FLEX Volt batteries
(*3.5 joules impact energy*)



\$419

DTDWV010: 8-Gallon Wet/dry HEPA/RRP Dust extractor.



\$629

DTDWV012: 10-Gallon Wet/dry HEPA/RRP Dust extractor.



\$449

DTDWV9330: Replacement HEPA filter for DTDWV010



\$34

DTDWV9402: Replacement fleece dust bags for DWV012



\$84

DTDWV2759: 5-pc accessory kit



\$39

DTDCV5801H: Replacement wet / dry filter

| SPOKANE | SEATTLE | YAKIMA | EUGENE | MEDFORD | KENNEWICK | BILLINGS | BOISE | IDAHO FALLS |
|----------------|----------------|----------------|----------------|----------------|----------------|----------------|----------------|----------------|
| (509) 535-9841 | (206) 764-9488 | (509) 248-1144 | (541) 342-3641 | (541) 779-0187 | (509) 491-5072 | (406) 248-7196 | (208) 377-0158 | (208) 522-7082 |
| (800) 348-4808 | (800) 481-8665 | (800) 243-5582 | (800) 944-0165 | (800) 871-3919 | | (800) 272-7196 | (800) 528-5118 | |

BUY 3 OR MORE LADDERS - GET 5% OFF

BUY 5 OR MORE LADDERS - GET 10% OFF

Fiberglass Step Ladders

FS-1500 SERIES

1A - 300lb Rating

LOFS1504

4'\$97.53

LOFS1505

5'\$101.89

LOFS1506

6'\$126.72

LOFS1508

8'\$171.48

LOFS1510

10'\$255.30

LOFS1512

12'\$312.93



Cross-Step Ladder Series

FXS-1500 Series

2 IN 1 LADDER

1A - 300lb Rating

LOFXS1504

4'\$105.39

LOFXS1506

6'\$136.52

LOFXS1508

8'\$185.27

LOFXS1510

10'\$275.83

LOFXS1512

12'\$338.11



C.L.I.M.B. ACADEMY



Let Edge follow up on your
March safety month with
onsite trainings &
inspections.

Fiberglass Extension Ladders

1A - 300lb Rating

FE-3200 SERIES

LOFE3216

16'\$233.26

LOFE3220

20'\$266.16

LOFE3224

24'\$308.69

LOFE3228

28'\$365.05

LOFE3232

32'\$455.10



Fiberglass Twin Step Ladders

1A - 300lb Rating

FM-1500 SERIES

LOFM1504

4'\$164.23

LOFM1506

6'\$214.88

LOFM1508

8'\$295.40

2 IN 1 LEANING PLATFORM LADDER



Fiberglass Platform to Leaning Ladder

375LB RATING

FCP-1400HD SERIES

LOFCP1404HD

4'\$296.28

LOFCP1406HD

6'\$348.08

LOFCP1408HD

8'\$425.70

OSHA APPROVED FOR LEANING!

375LB

CROSS PINNACLE



Fiberglass Tri-Pod Ladders

1A - 300lb Rating

FT-1500 SERIES

LOFT1506

6'\$197.67

LOFT1508

8'\$245.24

LOFT1510

10'\$360.05



DTDW088K: Cross-Line



DTDW0825LG: 12v 5-spot & cross line laser kit



DTDW089LG: 3X360 Green line laser



DTDCLE34030G: NEW 3X360 laser kit. Includes 20v 2Ah battery, charger, drop ceiling bracket, target card and case



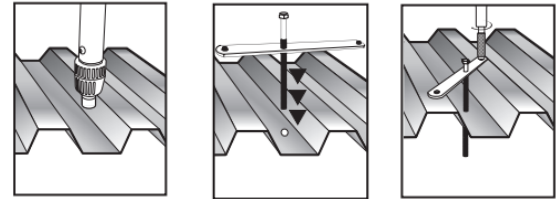
WFX300000: Walkthru

WFX300001: Walkthru Gate

Dewalt DDI & Deck Insert

EASY INSTALLATION - LABOR SAVINGS

- Cut/drill/punch the proper size hole in the steel deck
- Slide threaded bolt through the hole
- Secure the metal plate to the deck flutes



RLPFM2511100: 3/8"
RLPFM2511110: 1/2"
RLPFM2511120: 5/8"
RLPFM2511130: 3/4"

GENERAL APPLICATIONS AND USES

- seismic Loading and Cracked Concrete
- Low profile over metal deck
- Can drop through the side wall of metal deck

Code Approved
3/4" long approved
seismic anchor

DEWALT



The MINI-UNDERCUT+™ Internally Threaded Undercut Anchor

Patent Pending Geometry

Patent pending design bites into concrete for undercut

Threaded Sleeve

Internally tapped sleeve provides full thread engagement

Item# RLPFM2111820: 3/8" X 3/4



*SDS Stop bit and setting
tool improves speed &
reduces effort for faster
installations*

RLPFM2101720: SDS Setting Tool
RLPPA2431720: Stop Drill Bit

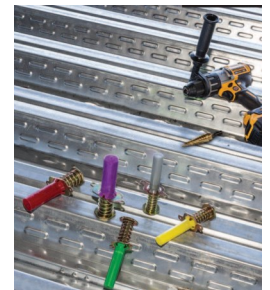
Features

- Ideal for precast hollow-core plank and **post-tensioned** concrete slabs
- **Cracked concrete** tested alternative to a mini drop-in anchor
- Redesigned ANSI carbide **stop bit** with enlarged shoulder for accurate depth
- Anchor design allows for shallow embedment as low as **3/4 of an inch**
- Internally threaded anchor for easy adjustment and removability of threaded rod or bolt
- Drill and drive the anchor with one tool for fast anchor installation

WOOD-KNOCKER®II+ & BANG-IT+®

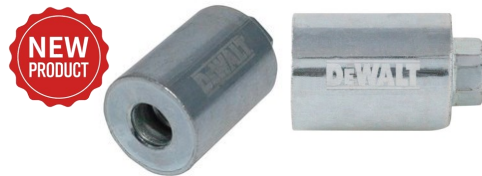
CAST-IN-PLACE CONCRETE INSERT ANCHORS
FOR WOOD & METAL DECK APPLICATIONS

DEWALT



RLPFM253143812: 1/4"-3/8"- 1/2" Combo insert for Wood deck **Aqua** - QTY 100/box
RLPFM253381258: 3/8"-1/2"- 5/8" Combo insert for Wood deck **Orange** - QTY 50/box

RLPFM353381258: 3/8"-1/2"-5/8" insert for metal deck **Orange** - QTY 50/ box
RLPFM3521438: 1/4"-3/8" Combo insert for metal deck **White** - QTY 100



PUSH-IN THREADED COUPLER - **New Product Release!**

Push-In couplers have one end that does not require turning threaded rod elements during installation which can be ideal for applications such as mounting prefabricated hardware and hanger assemblies. For single & multi-point hangers & assemblies.

FEATURES

- Hex nut side enables installation with a wrench
- Cinch nut mechanism designed to eliminate thread misalignment
- Threaded rod compatibility accepts burred or oiled rods
- Separate thread-in and push-in sides designed for attaching existing anchor points to pre-fabrication assemblies

| ITEM NUMBER | DESCRIPTION | THREADS PER INCH | ANCHOR MATERIAL | INTERNAL THREAD DIAMETER | PACK QTY |
|--------------|-------------------------|------------------|-----------------|--------------------------|----------|
| RLPFM3613012 | 1/2"-13 COUPLER PUSH-IN | 16 | CARBON STEEL | 1/2" | 20 |
| RLPFM3613038 | 3/8"-16 COUPLER PUSH-IN | 13 | CARBON STEEL | 3/8" | 20 |



\$539

DTDWE7491RS: 10"
Jobsite table saw & rolling stand. 32-1/2" rip capacity, comes with 10" 24-tooth carbide blade.

DTDWS779: 12"
Double-bevel sliding compound miter saw. Includes, 12" 60T saw blade, dust bag, wrench and material clamp.

\$399





FALL PROTECTION:

Ask your Edge representative about Fall Protection & Safety on the jobsite. We can conduct onsite trainings and inspections, as well as supply the best products!

Buy 1 Pallet Get A FREE TAPE SEAMER!

16 Rolls per Pallet



SFBLD38100: Builder Board,
38" x 100' (16 Rolls per Pallet)



SFBLDAPP: Builder
Board Tape Seamer
(\$200 value)



Clean Mats

SFCM2436: 24"x36" White
SFCM3636: 36"x36" White



Reverse Wound

SFCS24200W: Carpet Shield 24"x200'
SFCS36200W: Carpet Shield 36"x200'
SFCS36500W: Carpet Shield 36"x500'



SFPLS4896LBFR: Fire retardant
4mm corrugated
SFPLS4896W4: 4mm corrugated
PP sheet

Stucco Tape

ET145202: 2"X60YD -
Red



KEEP YOUR JOBSITE CLEAN THIS SPRING!



The MHS Series Hole Cutting Saws

- Tooth Set Design helps remove material faster
- New CAP reduces runout and vibration
- Increased cutting depth
- Non painted interior helps reduce slug seize

MKMHS09: Holesaw BIM MHS 9/16"

MKMHS10: Holesaw BIM MHS 5/8"

More single sizes available



BUY 5 HOLE SAWS GET 1 FREE

Of equal or lesser value

\$72



MKMHS02E: 8pc Electricians
Kit (7/8" - 2-1/2")

\$149



MKMHS08E: 13pc Master
Electrician Kit (7/8" - 4-1/2")

\$72



MKMHS04P: 8pc Plumbers
Kit (3/4" - 2-1/4")

\$169



MKMHS16P: 16pc Master
Plumbers Kit (7/8" - 4-1/2")



32-7/8"x1/2"x.020 Blades (3-pack, sold ea.)

MKZWEP321014: 10/14 Tooth Count

MKZWEP321216MC: 12/16t

MKZWEP321418: 14/18t

MKZWEP322024: 20/24t

Fits Compact Band Saws

35-3/8"x1/2"x.020 Blades (3-pack sold ea.)

MKZWEP351216MC: 12/16t

MKZWEP351418MC: 14/18t

Fits Mid Size Band Saws

44-7/8"x1/2"x.020 (3-pack sold ea.)

MKZWEP441216MC: 12/16t

MKZWEP441418MC: 14/18t

Fits Deep cut Band Saws

**Custom Welded Band Saw Blades available for a variety of
materials and shapes, fit to the length you need!**

Ask your Edge representative for more information.



BUY 4

METAL DEVIL BLADES

GET 1 FREE

Of equal or lesser value



MKCSM6504058CLSC: 6.5"X40T Steel cutting 5/8" arbor

MKCSM948NSC: 9"X48T Steel cutting 1" Arbor

MKCSM72548NSC: 7-1/4"X48T NXT Steel cutting 5/8"

MK53832NSC: 5-3/8"X32T Steel cutting 5/8" Arbor

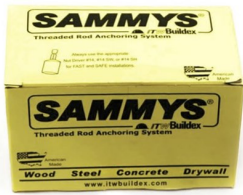
MKCSM1466NSC: 14"X66T Steel cutting 1" Arbor

**More Blades in stock, including blades for cutting Stainless Steel,
Aluminum, Thin Steel and Steel Studs (14" only).**

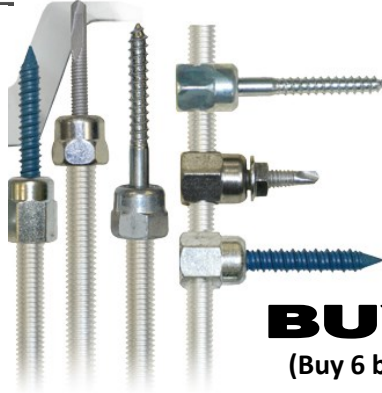
SAMMYS®



SAMMYS THREADED ROD ANCHOR SOLUTIONS



**Ask for Sammys®
in the yellow box!**



- Easy installation for applications in sloped or extreme roof pitches
- Simple one or two step threaded rod attachments
- Installation for Wood, Steel, Concrete, Drywall, Metal Deck, Purlin, and Tubular steel.
- Attach rod straight down, or up to a 90° angle, or utilize Sammys swivel head for anything in between.

BUY 150 GET 25 FREE!

(Buy 6 box's - Get 1 FREE - EXCLUDES SAMMYS X-PRESS)

Ask about Inspection Training



Web Slings

We carry a wide selection of vinyl web slings in both 1" and 2" widths

(see below for most popular lengths)

- LFEE2-802-4: 2" X 4' - 2 ply, eye to eye\$19
- LFEE2-802-6: 2" X 6' - 2 ply, eye to eye\$23
- LFEE2-802-10: 2"X10' - 2 ply, eye to eye\$35
- LFEE2-802-12: 2"X12' 2 ply, eye to eye\$37
- LFEE2-802-16: 2"X16' - 2 ply, eye to eye\$46
- LFEE2-802-20: 2"X20' 2 ply, eye to eye\$56



\$14

LF4FQSP: Wear Pads protect your investment



\$3.25

LF6G: Corner Guards

Tie Downs

Secure your loads with confidence

Ask an Edge representative about all the different lengths, strengths and connection types available to you!



- LF26422: 2"x27' Ratchet Tiedown U-Hook.....\$28
- LF60101-16 1"x16' Ratchet Tiedown U-hook..\$15
- LF60101-12 1"x12' Ratchet Tiedown U-hook..\$14



LF6A103B: 1"x15' Ratchet Tiedown S-Hook

\$11



Round/Endless Slings

These are an continuous loop of polyester yarns covered by a woven tubular jacket (see below for most popular lengths)

- LFEN30-3: 3' endless\$11
- LFEN30-8: 8' endless\$22
- LFEN60-6: 6' endless\$26
- LFEN90-10: 10' endless\$39



LF61001: 2"x27' Ratchet Tiedown Flat Hook.....\$26

LF60501: 2"x27' Ratchet Tiedown Flat Hook 1600#..\$28



\$27

LF60203: 1"x12' Retractable Ratchet Tiedown (2 pack)



PROBLEM SOLVING PRODUCTS!

- The **GripHook** is a lightweight alternative to metal attachments.
- Quick to install on your **FORKS** as well as remove and store.
- Self-gripping to the **FORK** so there's no need to tighten attachment to the **FORK**, saving you time.
- Turns your forklift truck into a hoist in a matter of seconds.
- Allows fork truck to lift and support loads from the bottom of the **FORKS**.
- Quick and easy load control.
- 1-Ton and 2-Ton options available.
- A lightweight device with a multitude of uses.

LF6H4S-1: 1 Ton w/ swivel hook for 4" fork (domestic option available 4" only)

LF6H5S-2: 2 Ton w/ swivel hook for 5" fork

LF6H6S-2: 2 Ton w/ swivel hook for 6" fork

Innovative Problem Solving @ Economical Prices!

FOR ANGLE GRINDERS



\$1.89/ea

PF69846: 4-1/2 x .045 x 7/8 Type 1 Flat, plain arbor Special SGP Steel + Inox



\$1.99/ea

PF69865: 6 x .045 x 7/8 Type 1 Flat hub, plain arbor hole Special SGP Steel + Inox

PF69945: 4-1/2" x .045 x 7/8 For Steel



\$1.99/ea

PF63172: 4-1/2 x .045 x 7/8 Type 27 Raised hub, plain arbor hole Special SGP Steel + Inox Grinding

PF63174: 6 X .045 X 7/8 Type 27 Steel + Inox

PF63162: 4-1/2 x .045 x 7/8 For Steel



\$2.39/ea

PF63320: 4-1/2 x .065 x 7/8 Type 27 Raised hub, plain arbor hole **Cut & Grind**



\$2.19/ea

PF61002: 4-1/2 x 1/4 x 7/8 Type 27 depressed center, **plain arbor** Universal Line Steel + Inox



\$3.49/ea

PF61001: 4-1/2 x 1/4 x 5/8-11 Type 27 depressed center, **threaded arbor** Universal Line Steel + Inox



\$3.49/ea

PF61003: 5 x 1/4 x 7/8 Type 27 depressed center, plain arbor Universal Line Steel + Inox



FREE BUR SET
w/ \$500 Pferd
purchase

FOR CHOP SAWS

\$6.99/ea



PF64502: 14 x 3/32 X 1" Max operating speed 4400 rpm , flat type T (shape 41) for Steel.

FOR HOT SAWS



\$10.99/ea



PF64018: 14 x 3/16 x 1" plain arbor Type 27 Flat center, Performance Line Steel & Cast Iron

FOR ANGLE GRINDERS

Polifan® Flap Discs

Longer Lasting!



\$3.99/ea

PF60457: 4-1/2 x 7/8, 36 grit Flat type 27, plain arbor hole, **Universal line**, Steel + INOX (stainless steel). High removal rate and extra long service life.



\$3.99/ea

PF60460: 4-1/2 x 7/8, 60 grit Flat type 27, plain arbor hole, **Universal line**, Steel + INOX (stainless steel). High removal rate and extra long service life.



\$6.99/ea

PF62176: 4-1/2 x 7/8, 40 grit Flat type 27, plain arbor hole, **Performance line**, Steel + INOX (stainless steel). High removal rate and extra long service life. **Lasts 30% longer**



\$6.99/ea

PF62178: 4-1/2 x 7/8, 60 grit Flat type 27, plain arbor hole, **Performance line**, Steel + INOX (stainless steel). High removal rate and extra long service life. **Lasts 30% longer**

PF62222: 4-1/2 x 7/8, 40 grit Flat type 29 (**conical shape**)

Ask About All the Great Wire Brushes & Carbide Burs from PFERD!

THIN CUT OFF WHEELS

GRINDING WHEELS

CUT OFF WHEELS

PURCHASE \$500 PFERD GET A FREE BUR SET



1503 E. Riverside
P.O. Box 3437
Spokane, Washington 99220

PRESORTED
STANDARD
U.S. POSTAGE
PAID
Spokane, WA 99201
Permit No. 888



EDGE ENGINEERED SYSTEMS

UNISTRUT: PERMANENT FALL PROTECTION - MEP SEISMIC



Prefabrication



Medical Support



Ceiling Grid w/ Seismic Bracing

CUSTOM UNISTRUT SYSTEMS FOR:

- Festooning tools & equipment above assembly cells
- Medical Supports
- Lab shelving
- Mechanical equipment supports
- Architectural ceiling grids
- Roofwalk
- Catwalks
- Solutions for Seismic bracing of MEP
- Solar panel supports
- Pipe Racking

DESIGN - INSTALL - PRE-FABRICATION - MATERIALS

SPOKANE
(509) 535-9841
(800) 348-4808
(509) 534-3139 (Fax)

SEATTLE
(206) 764-9488
(800) 481-TOOL
(206) 764-9487 (Fax)

YAKIMA
(509) 248-1144
(800) 243-5582
(509) 575-4696 (Fax)

KENNEWICK
(509) 491-5072
(509) 981-6817

EUGENE
(541) 342-3641
(800) 944-0165
(541) 343-1753 (Fax)

MEDFORD
(541) 779-0187
(800) 871-3919
(541) 773-4599 (Fax)

BILLINGS
(406) 248-7196
(800) 272-7196
(406) 248-7269 (Fax)

BOISE
(208) 377-0158
(800) 528-5118
(208) 377-0978 (Fax)

IDAHO FALLS
(208) 522-7082
(208) 529-5456 (Fax)