



Construction Supply



SPOKANE
509-535-9841

BILLINGS
406-248-7196

YAKIMA
509-248-1144

BOISE
208-377-0158

SEATTLE
206-764-9488

EUGENE
541-342-3641

MEDFORD
541-779-0187

IDAHO FALLS
208-522-7082

KENNEWICK
509-491-5072

BUY 3 OR MORE LADDERS – SAVE \$1 PER FOOT



FS Series Step Ladders

TYPE 1A, 300 LB CAP

LOFS1504	4'	\$98⁰⁰
LOFS1506	6'	\$127⁰⁰
LOFS1508	8'	\$172⁰⁰
LOFS1510	10'	\$256⁰⁰
LOFS1512	12'	\$314⁰⁰



FXS Series Fiberglass Cross Step Ladders

TYPE 1A, 300 LB CAP

LOFXS1504	4'	\$106⁰⁰
LOFXS1506	6'	\$137⁰⁰
LOFXS1508	8'	\$186⁰⁰
LOFXS1510	10'	\$277⁰⁰
LOFXS1512	12'	\$339⁰⁰



FE Series Fiberglass Extension Ladders

TYPE 1A, 300 LB CAP

LOFE3216	16'	\$249⁰⁰
LOFE3220	20'	\$283⁰⁰
LOFE3224	24'	\$328⁰⁰
LOFE3228	28'	\$366⁰⁰
LOFE3232	32'	\$470⁰⁰



FM Series Twin Step Ladders

TYPE 1A, 300 LB CAP

LOFM1504	4'	\$177⁰⁰
LOFM1506	6'	\$233⁰⁰
LOFM1508	8'	\$315⁰⁰



FT Series Tripod Step Ladders

TYPE 1A, 300 LB CAP

LOFT1506	6'	\$210⁰⁰
LOFT1508	8'	\$260⁰⁰
LOFT1510	10'	\$379⁰⁰



FCP Series Platform to Leaning Ladders

TYPE 1A, 300 LB CAP

LOFCP1404HD	4'	\$325⁰⁰
LOFCP1406HD	6'	\$382⁰⁰
LOFCP1408HD	8'	\$468⁰⁰

PRICES SUBJECT TO CHANGE DUE TO TARIFFS

DEWALT**TOUGHWIRE™**

FAST

Clear identifiers mark the proper directional usage and device pairings for quick assembly.



STRONG

Wire constructions are designed to support a variety of tough hanging applications.



EASY

Securely handle while wearing gloves.



SPOKANE
509-535-9841

BILLINGS
406-248-7196

YAKIMA
509-248-1144

BOISE
208-377-0158

SEATTLE
206-764-9488

EUGENE
541-342-3641

MEDFORD
541-779-0187

IDAHO FALLS
208-522-7082

KENNEWICK
509-491-5072



MATERIAL HANDLING



B&B Pipe Stands

BB4100 V-HEAD JACKSTAND **\$105⁰⁰**

BB4105 PIPE JACK STAND W/STEEL ROLLERS 29-50" **\$139⁰⁰**

BB2033-4F CONDUIT CART W/MESH BOT 57 x 34 x 62 **\$1,060⁰⁰**



SUMNER

PIPE JACK ST-881 W/VEE HEAD FOLD-A-JACK

SU781300



Current Tools 
FOR THE PROFESSIONAL ELECTRICIAN

Wire Cage

CT5400



Furniture Dolly 30" x 18" x 4"

CALL FOR INFO



Conduit Cart

BB2033-4F



INTRODUCING
**KNAACK®
PADLOCKS**
**LOCKED & LOADED
IN EVERY KNAACK**

**YOUR KNAACK® BOX
JUST GOT MORE SECURE**

DESIGNED BY KNAACK FOR KNAACK



Created to maximize security

PACKED IN



No wasted time searching/buying
the right padlock

ONE-KEY



Jobsite key and security management
via changeable cylinders

FEATURES



Flat top design for easier materials
transport and work surface

2X wall thickness
for jobsite durability and
payloads



Electrical cord pass
through with rubber
grommet



Ergonomic handle to alleviate
fatigue when pushing and
pulling maximum payloads

Taller than light-duty
carts for an elevated
work platform
Approx. Dimensions:
45.5" L x 27" W x 37" H

**750lbs
PAYLOAD**

**3YEAR
WARRANTY**

AVAILABLE COLORS



KAT-01



KAT-01-BK



KAT-0-1-WT



KAT-01-BL



KAT-01-GY



SPOKANE
509-535-9841

BILLINGS
406-248-7196

YAKIMA
509-248-1144

BOISE
208-377-0158

SEATTLE
206-764-9488

EUGENE
541-342-3641

MEDFORD
541-779-0187

IDAHO FALLS
208-522-7082

KENNEWICK
509-491-5072



OUTDOOR CLEANUP



Poly-America Trash Bags

POHKHM42032B 33"X48" POLY BAG 3ML 42G 32/BOX **\$25⁰⁰**

POHKHM42050B 33"X48" POLY BAG 3ML 42G 50/BOX **\$39⁰⁰**



Tilt Trucks

RB1013 3/4 CU. STD DUTY, 1000# CAP., BLACK

RB1304 1/2 CU. UTIL DUTY, 450# CAP., BLACK

RB1305 1/2 CU. STD DUTY, 850# CAP., BLACK

RB1314 1CU. UTIL DUTY, 850# CAP., BLACK



Garbage Cans And Dollys

RB2632 32 GAL BRUTE CAN GARBAGE CAN

RB2643 44 GAL BRUTE CAN GARBAGE CAN

RB2655 55 GAL BRUTE CAN

RB2640 DOLLY F/BRUTE CANS FITS 32, 44 & 55 GALLON BRUTE



SURFACE COVERING

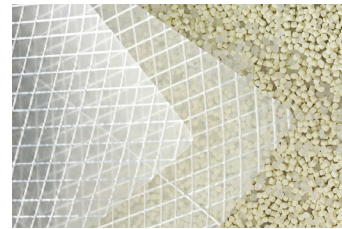
	THICKNESS	COLOR	SIZE
PO212C	.002 MIL	CLEAR	12' x 200'
PO406C	.004 MIL	CLEAR	6' x 100'
PO408C	.004 MIL	CLEAR	8' x 100'
PO410B	.004 MIL	BLACK	10' x 100'
PO410C	.004 MIL	CLEAR	10' x 100'
PO420B	.004 MIL	BLACK	20' x 100'
PO420C	.004 MIL	CLEAR	20' x 100'
PO610C	.006 MIL	CLEAR	10' x 100'
PO620B	.006 MIL	BLACK	20' x 100'
PO620C	.006 MIL	CLEAR	20' x 100'
PO1020B	.010 MIL	BLACK	20' x 100'
PO1020C	.010 MIL	CLEAR	20' x 100'

Poly-America Polyethylene Rolls



Fire Retardant Rolls

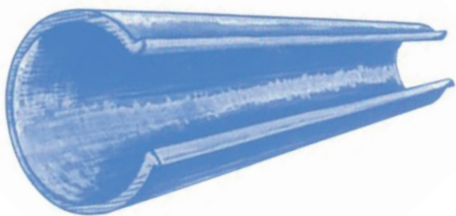
	THICKNESS	SIZE
PO420FR	.004 MIL	20' x 100'
PO620FR	.006 MIL	20' x 100'



Viaflex

Dura-Skrim® Reinforced Rolls

	THICKNESS	COLOR	SIZE
RNR5CC20100	.006 MIL	CLEAR	20' x 100'
RNR5CC20100FR	.006 MIL	FIRE RETARDANT	20' x 100'
RNR5CC40100	.006 MIL	CLEAR	40' x 100'



Scaffold Wind Clip 100/Box 11" L WC

	WIDTH	LENGTH
TWT0608	6'	8'
TWT0810	8'	10'
TWT1012	10'	12'
TWT1216	12'	16'
TWT1220	12'	20'
TWT1620	16'	20'
TWT2020	20'	20'
TWT2030	20'	30'
TWT2040	20'	40'



Woven Polyethylene Tarps-Blue



BLADES

**BUY A METAL DEVIL SAW &
GET 1 FREE BLADE**



**14" Metal Cutting
Chop Saw**

MKCSM14NB



**9" Metal Cutting
Saw w/ Blade**

15 AMP 2300 RPM

MKCSM9NXTB



**7" Metal Cutting
Saw w/ Blade**

13AMP 3800RPM

MKCSM7NXTB

**BUY (5) METALDEVIL BLADES,
GET 1 FREE
OF EQUAL OR LESSER VALUE**



**BUY (12) BANDSAW BLADES,
GET 3 FREE
OF EQUAL OR LESSER VALUE**



6" and 7" Blades

FRD0624A

6-1/2" x 24-Teeth
Framing Saw Blade for Wood

\$11⁵⁰

FRD0724A

7-1/4" x 24-Teeth
Framing Saw Blade for Wood

\$13⁰⁰



**BUY 9
GET 1 FREE**

FIRE SAFETY



Fire Extinguishers

KI21032136	PRO2.5# EXTINGUISHER W/WALL HANGER, ABC RATED	\$46⁰⁰
KI21032138	PRO2.5#-VB EXTINGUISHER W/ VEHICLE BRACKET, ABC RATED	\$46⁰⁰
KI21032142	PRO5# EXTINGUISHER ABC FIRE RATED W/WALL HANGER	\$58⁰⁰
KI21032149	PRO10# EXTINGUISHER ABC FIRE RATED W/WALL HANGER	\$84⁰⁰
KI21032152	PRO20# EXTINGUISHER ABC FIRE RATED W/WALL HANGER	\$155⁰⁰



Logistics Fire Extinguisher Stand

HOLDS
5, 10 OR 20 LB
EXTINGUISHER.

LGFMRC

\$195⁰⁰



Safety Cabinets

EA1924X	12GAL S/C 1 DOOR, 1 SHELF, SELF-CLOSING
EA3010X	30GAL S/C 2 DOOR, 1 SHELF, SELF-CLOSING
EA4510X	45GAL S/C 2 DR, 2 SHELVES, SELF-CLOSING
EA6010X	60GAL S/C 2 DR, 2 SHELVES, SELF-CLOSING



Gas Cans

EAUI-10-S	1 gal, w/ funnel
EAUI-20-S	2 gal, w/ funnel
EAUI-50-FS	5 gal, w/ funnel
EAUI-50-SY	5 gal, diesel
EAU2-51-S	5 gal, metal hose
EAU2-51-SY	5 gal, metal hose, diesel



STABILA® LEVELS



8" & 16" Combo Type Levels

SB37816 **\$149⁰⁰**



10" Torpedo Levels

SB25100	#81SM MAGNETIC	\$49⁰⁰
SB25245	45° VIAL W/ V-GROOVE	\$60⁰⁰
SB25360	360° VIAL W/ V-GROOVE	\$82⁰⁰

#96M Magnetic Levels

SB38624	24"	\$99⁰⁰
SB38648	48"	\$159⁰⁰



Digital IP67 Levels w/case

SB39524	24"	\$270⁰⁰
SB39548	48"	\$315⁰⁰



Plate Level 7' To 12' 106T

SB35712 **\$395⁰⁰**

SAMMYS®

**BUY 5 BOXES OF SAMMYS ROD ANCHORS
GET 1 FREE**



CUT OFF WHEELS – ANGLE GRINDERS		TYPES OF STEEL - APPLICATIONS
PF63114	4-1/2X3/32 5/8-11 ARBOR METAL CUT TYPE 27	STEEL PROFILES & SOLIDS
PF63162	4-1/2X.045 7/8 ARBOR TYPE 27	STEEL PROFILES & SOLIDS
PF63164	6X.045 7/8 ARBOR TYPE 27	STEEL PROFILES & SOLIDS
PF63172	4-1/2X.045X7/8 WHEEL TYPE 27 SG-PLUS INOX	STEEL & STAINLESS-STEEL THIN SHEET & PROFILES
PF63174	6X.045X7/8 WHEEL TYPE 27 SG-PLUS INOX	STEEL & STAINLESS-STEEL THIN SHEET & PROFILES
PF69846	4-1/2X1/16X7/8 WHEEL A46 SG-PLUS INOX	STEEL & STAINLESS-STEEL THIN SHEET & PROFILES
PF69865	4-1/2X1/16X7/8 WHEEL A46 SG-PLUS INOX	STEEL & STAINLESS-STEEL THIN SHEET & PROFILES

FLAP WHEELS – ANGLE GRINDERS		
PF62250	4-1/2X5/8-11 40G POLIFAN FLAT ALUMINUM OXIDE TYPE 27	STEEL & STAINLESS-STEEL
PF62252	4-1/2X5/8-11 60G POLIFAN FLAT ALUMINUM OXIDE TYPE 27	STEEL & STAINLESS-STEEL

CUT OFF WHEELS – PORTABLE GAS SAWS & CUT-OFF GRINDERS		
PF64018	14X3/16X1 HIGH SPEED STEEL	CAST IRON & STEEL

CUT OFF WHEELS – STATIONARY CHOP SAW		
PF64502	14X3/32X1 FERROUS GENERAL PURPOSE	STEEL SOLID MATERIALS, PROFILES & PIPES

**WE SELL A WIDE VARIETY
OF PFERD ABRASIVES.
CALL FOR DETAILS.**



29 PC. Drill Set

DC400HD29

\$109⁰⁰



SPOKANE 509-535-9841	BILLINGS 406-248-7196	YAKIMA 509-248-1144	BOISE 208-377-0158	SEATTLE 206-764-9488	EUGENE 541-342-3641	MEDFORD 541-779-0187	IDAHO FALLS 208-522-7082	KENNEWICK 509-491-5072
--------------------------------	---------------------------------	-------------------------------	------------------------------	--------------------------------	-------------------------------	--------------------------------	------------------------------------	----------------------------------

CAUTION/FLAGGING/ETC



Empire
Caution Tape

EE77-1001	3" x 1000FT YELLOW/BLACK, 3 MIL
EE77-1004	3" x 1000 DANGER RED/BLACK, 3 MIL



Empire
Flagging Tape

EE77-001	GLO-LIME 1" x 200FT
EE77-002	GLO-ORANG 1" x 200FT
EE77-003	GLO-PINK 1" x 200FT
EE77-004	GLO-YELLO 1" x 200FT



Cortina Fence
4' x 100' ORANGE, GRID PATTERN

CR03-902



Prime Source Fence Post
6' GREEN HEAVY DUTY 10/BUNDLE

PRMTP60125

TEMPORARY ROOF FENCE



Cortina Perimeter Pennant Fence

100' RED W/64 9 x 13" FLAGS

CR03-400



Vizcon Roof Edge Delineator

39" W/ 30# RECT
RBR BASE

VZ47039-CRU-30



Tie Down 7-1/2' Guard Rail & Bases

- Lighter base
- Quick installation
- We sell and rent

**BUY OR
RENT**

GLOVES

PIP

MaxiFlex® Nitrile Gloves

Micro Dotted Palm

PIP34-844 XS-XL



PIP


Split Back Kevlar Stitched Driver Gloves

PIP68-163SB M-XL





Sikla siFramo is a weldless, configurable, reusable metal framing system that can easily take the place of clunky welded structural steel in your facility. The bolted system allows for quick modifications, endless design flexibility, and minimal installation time. Our modular steel systems can be assembled 300-500% faster than traditional welded structures, often in just a few hours as opposed to days or weeks. Our solutions are fully customizable, so if your needs vary, we can design to fit your project.

A photograph of a large industrial facility, likely a warehouse or manufacturing plant, featuring a complex metal framing system made of interconnected steel beams. The system is used to support large, light-colored panels with a diamond-shaped pattern. The background shows the high ceiling and structural elements of the building.

CALL YOUR SALES REP to schedule a 30 minute presentation on how this system can save you labor and free your shop up to pursue more work!

SPOKANE 509-535-9841	BILLINGS 406-248-7196	YAKIMA 509-248-1144	BOISE 208-377-0158	SEATTLE 206-764-9488	EUGENE 541-342-3641	MEDFORD 541-779-0187	IDAHO FALLS 208-522-7082	KENNEWICK 509-491-5072
--------------------------------	---------------------------------	-------------------------------	------------------------------	--------------------------------	-------------------------------	--------------------------------	------------------------------------	----------------------------------



FALL PROTECTION



Compliance in a Can BUCKET OF SAFETY ROOFING KIT

WFK111201XP

\$149⁰⁰



Standard Harness

WFH212001	S	\$95⁰⁰
WFH212002	M/L	\$95⁰⁰
WFH212004	XL	\$95⁰⁰
WFH212005	2XL	\$95⁰⁰
WFH212006	3XL	\$110⁰⁰



Fall Protection

Lanyards

DI1340101

PROSTRETCH 6'

\$75⁰⁰

DI1340121

PROSTRETCH 6' W/ REBAR HOOK ON ONE END

\$95⁰⁰

DI1340141

PROSTRETCH 6' 100% TIE-OFF STANDARD HOOKS

\$101⁰⁰

DI1340161

PROSTRETCH 6' 100% TIE-OFF, 2-1/4 REBAR HOOK

\$139⁰⁰



Fall Protection

Tripod & Winch

DI8301080



Fall Protection

Rebel Leading Edge SRL

DI3590047

33'

\$695⁰⁰

DI3590048

50'

\$905⁰⁰



Bantam 10' SRL LE

WFR410010LE

\$310⁰⁰



SPOKANE
509-535-9841

BILLINGS
406-248-7196

YAKIMA
509-248-1144

BOISE
208-377-0158

SEATTLE
206-764-9488

EUGENE
541-342-3641

MEDFORD
541-779-0187

IDAHO FALLS
208-522-7082

KENNEWICK
509-491-5072



SpecSeal® LCI Intumescent Sealant

STILCI300	10.1 oz tube
STILCI320	20 oz. sausage



Intumescent Firestop Collars

STILCC150	For 1.5" Trade Size Plastic Pipe
STILCC200	For 2" Trade Size Plastic Pipe
STILCC300	For 3" Trade Size Plastic Pipe
STILCC400	For 4" Trade Size Plastic Pipe



Firestop Pillows

STISSB14	1" x 4" x 9"	STISSB26	2" x 6" x 9"
STISSB24	2" x 4" x 9"	STISSB36	3" x 6" x 9"



Smoke 'N' Sound Accoustical Sealant

STISNS120W	20 Oz Sausage - 36 cu in (592 ml)
-------------------	-----------------------------------



Series SSP Intumescent Putty Pads

STISSP4S	7.25" x 7.25" x 3/16" pad
STISSP9S	9.00" x 9.00" x 3/16" pad

Wrap Strips

STISSWBLU	12' x 2" x 3/16" roll, blue
SSWBLU2	12' x 2" x 1/8" roll, blue
SSWRED	12' x 1-1/2" x 1/4" roll, red
SSWRED2	12' x 1-1/2" x 1/8" roll, red



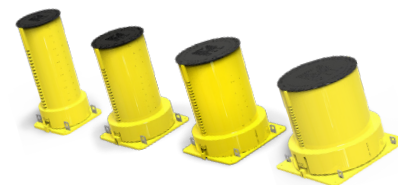
Firestop Block

STISBR25



Cast-In Firestop Device

STICD201GW	2" Device
CD301GW	3" Device
CD401GW	4" Device
CD601GW	6" Device



S.H.A.R.P.[®]
STRUT • HARDWARE • ANCHORS • ROD • PIPE HANGERS

VIEW OUR
CATALOG





1503 E. Riverside
P.O. Box 3437
Spokane, Washington 99220

PRESORTED
STANDARD

U.S. POSTAGE
PAID

SPOKANE, WA 99201
PERMIT NO. 888

EDGE PROFESSIONAL SERVICES

RENTALS & REPAIR



509-535-9841

rental@edgecs.com