



Construction Supply

the cutting edge

innovative products and solutions from the construction experts
www.edgecs.com July 14 - Aug 31 2017



Evap/Swamp Cooler Fans

- 36" and 48" Evaporative Cooling (36" unit fits through a standard door)
 - 40 Gallon capacity or garden hose attachment for extended operations
 - Lowters temperatures 15-25 °F
 - 120 V operation
- #TPIEVAP36-3: (36" Unit)



OmniAire 2000C HEPA Air Machine

construction grade **HEPA** negative air Machine. High, Off & Low settings
 Airflow: 1000/1800 cfm | Weight: 125 lbs | #OCA2000C

OmniAire 2200C HEPA Air Machine

Negative air machine with two speeds, HEPA filter. **Galvanized Metal**
 Airflow: 1000/2000 cfm* | Weight: 152 lbs
 #OCA2200C - 34"X26"X31"

OmniAire HEPA Air Filtration Systems are used as air scrubbers and negative air machines on all types of abatement projects.

Applications:

- Abatement of mold, asbestos and lead
- Restoration projects after flood and fire
- Medical facilities to prevent spread of virus and bacteria during renovation and maintenance
- Create "Clean Room" environment in industrial facilities
- Removal of construction dust generated by grinding concrete, sanding wood and many other tasks. Use economical Bag Filter assembly in place of the HEPA filter

OmniAire 2200UL HEPA Air Machine

Negative air machine with two speeds, **Light weight aircraft grade aluminum** silver/blue housing, HEPA filter & added 0"-5" Pressure Gauge. Airflow: 1000/2000 cfm * Weight: 137 lbs | #OCA2200UL - 34"X26"X31"



TPIPB-36-D

36" Portable Blower Fan
 120V, 1/3 Hp, 2 speed motor,
 single phase, 6,500 CFM



TPIMB-24-DF

24" Floor Style Fan
 120V, 1/4 hp, Single Phase, 2
 speed, 3,300 CFM (enclosed motor
 ideal for dusty, dirty environments)



TPIF-24-TE

24" Floor Style Fan 120v,
 Single Phase, 3 speed,
 2,100 CFM 360 degree tilt for
 airflow adjustments.



TPICF-20

20" Stainless Steel Floor Fan
 120v, 1/5 hp, 3 speed, single
 phase,
 1,725 CFM (should be used in
 clean, dry, commercial applications)

SPOKANE	SEATTLE	YAKIMA	EUGENE	MEDFORD	BILLINGS	GILLETTE	BOISE	IDAHO FALLS
1503 E. Riverside Ave. Spokane, WA 99202 (509) 535-9841 (800) 348-4808 (509) 534-3139 (Fax)	5419 Maynard Ave S. Seattle, WA 98108 (206) 764-9488 (206) 764-9487 (Fax) (800) 481-TOOL	812 E. Mead Yakima, WA 98903 (509) 248-1144 (800) 243-5582 (509) 575-4696 (Fax)	490 S. Bertelsen Eugene, OR 97402 (541) 342-3641 (800) 944-0165 (541) 343-1753 (Fax)	1789 Sage Rd. Medford, OR 97501 (541) 779-0187 (800) 871-3919 (541) 773-4599 (Fax)	120 Moore Lane Billings, MT 59101 (406) 248-7196 (800) 272-7196 (406) 248-7269 (Fax)	105 Warren Ave. Gillette, WY 82716 (307) 682-8522 (800) 670-6851 (307) 682-8576 (Fax)	2000 Century Way Boise, ID 83709 (208) 377-0158 (800) 528-5118 (208) 377-0978 (Fax)	760 W. Broadway Idaho Falls, ID 83402 (208) 522-7082 (208) 529-5456 (Fax)

"Stock up for Summertime!"



Gott Water Coolers
 3 gal #IGGT1683.....\$28.99
 5 gal #IGGT1685.....\$30.99
 10 gal #IGGT1610.....\$59.99



Artic Skull Cooling Towel
 #RVRCS11.....\$5.99
High Vis Yellow

Artic Skull Cooling Headband
 #RVRCS110.....\$4.99
Artic Skull Cooling Head Shade
 #RVRCS307.....\$6.99

Neck Nape Shade
 #RVNSG.....\$5.49

Squincher Products

23.83 oz #SQ016040.....\$4.41ea
 (2.5 gal yield, lemonade, orange,
 fruit punch, lemon lime, grape)
 6 oz Quick stix #SQ060100.....\$0.49ea
 (orange, mixed berry,
 fruit punch, grape, lemon lime)



Radians Class 2 Hi-Viz Safety Shirts

RVST11-2PGS: m - xxl Green

RVST11-2POS: m - xxl Orange



ITW Dymon



Bottled Water: #WATER-16
 (16 oz. bottle / 24 per case)
Ice : # ICE (*Not available in all stores*)

Dymon Sunscreen Wipes:
 #DM91201
Dymon Insect Shield Wipes:
 #DM91401

"NEW"

CFK615-017: Class B Plastic Case
CFK615-018: Class B Metal Case



Certified Safety Mfg.

CFK610-027: 10 Person kit Poly
CFK610-028: 10 Person kit Metal
CFK610-029: 25 Person Kit Poly
CFK610-030: 25 Person kit Metal
CFK610-033: 50 Person Kit Poly
 ★ **CFK606-217:** 24 Person 1st Aid BBP.....
 ★ *Blood Borne Pathogen Kit!*

\$14.70
\$23.30
\$19.12
\$24.72
\$31.40
\$45.01



CFK609-057:
 Heat Stress Kit

Radians Survey Vests

RVSV6G -S: -M: -L: -XL: -XXL: (Green)

RVSV6O-S: -M: -L: -XL: -XXL: (Orange)



Ask about
 custom
 logo's for
 your apparel



SPOKANE (509) 535-9841 (800) 348-4808	BILLINGS (406) 248-7196	YAKIMA (509) 248-1144	GILLETTE (307) 682-8522	SEATTLE (206) 764-9488	BOISE (208) 377-0158	EUGENE (541) 342-3641	IDAHO FALLS (208) 522-7082	MEDFORD (541) 779-0187
--	-----------------------------------	---------------------------------	-----------------------------------	----------------------------------	--------------------------------	---------------------------------	--------------------------------------	----------------------------------

LUGALL®



edge
Construction Supply

LU1000-15SH: 1/2 Ton Cable Hoist, 15ft Single Line Lift, 3/16" Cable Diameter (no double line capability)

LU1500-25SH: 3/4 Ton Cable Hoist. 12'6" Double Line Lift, 25' Single Line Lift (750lb Single Line Capacity) 5/32" cable diameter

LU2250-15SH: 1-1/8 Ton Cable Hoist. Double line lift 10', 2250lbs. Single line lift 20', 1125 lbs. 3/16" cable diameter.

LU3000-10SH: 1-1/2 Ton Cable Hoist. Double line lift 5', 3000lbs. Single line lift 10', 1500 lbs. 7/32" cable diameter.

LU4000-20SH: 2 Ton Cable Hoist. Double line lift 10', 4000lbs. Single line lift 20', 2000lbs. 1/4" cable diameter.

LU6000-15SH: 3 Ton Cable Hoist. Double line lift 7'6", 6000lbs. Single line lift 15', 3000 lbs. 5/16" cable diameter.



CM5317
1-1/2 Ton, 15' Lift, Hook Mount.



CM5312
3/4 Ton, 15' Lift, Hook Mount.



CM0210
Mini Ratchet lever hoist. 550lb, 5' lift



CM0214
Mini Ratchet lever hoist. 1100lb, 10' lift



CM2259
3 Ton, 10' Hand Chain Hoist.



CM2233
2 Ton, 20' Hand Chain Hoist. 1-1/4" Hook Opening



CM2262
1 Ton, 20' Hand Chain Hoist. 1-1/32" Hook Opening



Alloy Anchor Shackles - Painted
3/16" to 1"
1/2 to 10 ton Working load Limit



Wire Rope Grips
5/16" & 3/8"
Double grip, double saddle wire rope clips



Ball Bearing Trolley
1/2 ton to 3 ton capacity
Double grip, double saddle wire rope clips



Web Slings

We carry a wide selection of vinyl web slings in both 1" and 2" widths (see below for most popular lengths)

LFEE2-802-4: 2" X 4'- 2 ply, eye to eye
LFEE2-802-6: 2" X 6'- 2 ply, eye to eye
LFEE2-802-10: 2"x10'- 2 ply, eye to eye
LFEE2-802-16: 2"x16'- 2 ply, eye to eye
LFEE2-802-20: 2"x20' 2 ply, eye to eye



LF4FQSP: Wear Pads
protect your investment



Round/Endless Slings

These are an continuous loop of polyester yarns covered by a woven tubular jacket (see below for most popular lengths)

LFEN30-3: 3' endless
LFEN30-8: 8' endless
LFEN60-6: 6' endless
LFEN90-10: 10' endless

Ask about Inspection Training

Tie Downs

Secure your loads with confidence



LF26422: 2"x27' Ratchet Tiedown U-Hook

\$26



LF6A103B: 1"x15' Ratchet Tiedown S-Hook

\$10.95

Ask an Edge representative about all the different lengths, strengths and connection types available to you!



LF61001: 2"x27' Ratchet Tiedown Flat Hook

\$26



LF60203: 1"x12' Retractable Ratchet Tiedown

\$23

cendrex **Access Doors** **Time & Labor Saving Devices!**

Cendrex manufactures access doors and has the experience and capability to meet your every need. Whether your requirement is for applications specifying drywall, plaster, masonry, tile or other surface types, Cendrex offers a full line of access doors: fire rated, general purpose, recessed, security, special application, the CTR exclusive hidden flange door, as well as floor hatches and roof hatches. Cendrex also has the ability to create access doors in special dimensions and to design and manufacture your custom access doors.

FLEXISNAP - Adjustable Access Doors



Magnetic connection with adjustable frame for easy connection to drywall openings.

FIRE RATED DOORS



Available in multiple sizes, anchoring methods & Insulated or Uninsulated.

SECURITY DOORS



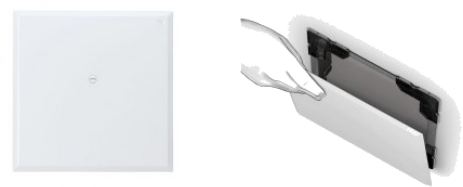
Can be prepared for all kinds of deadlocks.

CTR - Access Door with Hidden Flange for All Surface types



- Frameless installation
- Bevelled panels with hidden flange
- Improved esthetics - White textured powder coat finish

CTA - Revolutionary Adjustable General Purpose Access Door



- Adjustable to different opening sizes
- For square or rectangular openings
- Save up to 90% installation time



Odd Size Access Doors Manufactured in 5 Business Days * Custom Access Doors Manufactured in 10 days * LEED Complete Documentation



YELLOW POLY ROPE

ERTWPY080600: 1/4" x 600'
ERTWPY120600: 3/8" x 600'
ERTWPY160600: 1/2" x 600'
ERTWPY200600: 5/8" x 600'
(Add "-01" to the end of the item # to purchase by the foot to fit your specific needs)



PULLING ROPE

ERCD160600: 1/2" x 600'
ERCD240600: 3/4" x 600'
ERCD280600: 7/8" x 600'
high tensile, low stretch poly double braided pulling rope.

RED POLY ROPE

ERTWPR120600:
38" x 600' Poly Rope



BARRIER ROPE

ERTWPPYB081200:
1/4" x 1200' Barrier Rope

PULLING TAPE

ERWP12503000: 1/2" x 3000'-1250lb
ERWP18003000: 5/8" x 3000'-1800lb
ERWP25003000: 3/4" x 3000'-2500lb
ERWP40003000: 4000# x 3000'-4000lb
Detectable Woven Polyester Pulling Tape. Sequentially footage marked.



CS1100

3-Piece Clip-on Zippered Bags



CS302

Foam kneeling pad 14" x 21" w/ Handle



CS5127

Smartphone Holder



CS361

Knee Pads



CS5505

Electricians pouch with handle & padded strap



CS1823

Poly Nail & Tool Bag



CS1134

28 Pocket Tool Back Pack



TRADE-IN

&

TRADE-UP

July through
August 2017

✓ Competitive Trade Up

Trade-in your Competitive branded tools for \$100 to \$200 off a brand new Enerpac or Simplex tool!



✓ Loyalty Trade-In

Trade-in your Enerpac or Simplex tools for \$50 to \$100 off a brand new Enerpac or Simplex tool!



EVO Synchronous Lifting System

Completely customizable lifting solutions to meet the most difficult Lifting scenarios



Hydraulic Pumps

Manual and Electric Pumps

Pumps from 10,000 - 40,000 psi, 20in³ to 40 gal reservoir, Flow rates from .037 in³/stroke to 60in³/min



Bolting Tools

Hydraulic Wrenches, Square drive Controlled Tightening Tools, Joint Assembly Tools & Joint Separation Tools



Enerpac Hydraulic Cylinders

- Available in 5—100 ton capacity
- Stroke of 1/2" - 14-1/4"
- Ask about other varieties such as Double Action, Corrosion Resistant, Hollow Center...and more.

Ask about Complete Sets

ENERPAC



Ask about Accessories

Hoses, Manifolds, Valves, & Fittings

WE RENT & SELL ENERPAC!



\$299

DTDCB1800B: 1800 Watt FLEXVOLT Portable Power Station and Charge station.

DTDCB1800M3T1: 1800 Watt Portable Power Station and Charger Kit. Includes 3 - 20V MAX 4.0Ah batteries & 1 - 60V 6Ah Flexvolt battery.



Delivers 1800W continuous and 3600 peak AC power when supplied with 4 - 20V MAX batteries!!!



\$139

MI0234-6: 1/2" Magnum Drill. 0-950 RPM, 5.5 Amps, Trigger speed control and reverse.



\$279

MI6232-20: Deep cut variable speed Band Saw. 5" x 5" cut capacity. (MI6232-21 comes with case **\$299**)



\$179

MI6536-21: 13 Amp Orbital Super Sawzall Recip Saw w/ carrying case.



\$299

MI1675-6: 1/2" Hole-Hawg Drill 300/1200 rpm. (MI1676-6 comes with case)



\$369

MI2897-22: M18 Fuel Hammer Driver & Impact kit.
Includes:
(1) MI2704-20 Fuel 1/2" Hammer Drill Driver
(1) MI2753-20 1/4" Hex Impact Driver
(2) MI48-11-1850 Redlithium XC 5.0 Batteries
(1) Charger.
(1) Carrying Case

+ A Third Battery FREE



SALE
\$3650⁰⁰



When you need Power

Made In The U.S.A.

Features 12,000 Watt
6 x 120 V Receptacles (20A)
1 x 240 V Receptacle (30A)
1 120/240 V Receptacle (60A)

Specs

- 120/240 Volt
- 90/45 amps
- 5 hp Honda
- 9 Hr run time
- Electric Start
- 3 year warranty

\$3.99 each

KRS00857 Kil'em: Wasp & Hornet Spray.



\$13.44ea
Red Danger
EE77-1004
(3"X100' 3MIL)



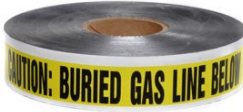
\$13.44ea
Yellow Caution
EE77-1001
(3"X1000' 3 MIL)



Buried Electrical Line
ET84532: 3"X1000'
\$33.92ea



STL11462 (SHOWN) Stringliner Line Reels (more color options available)



Buried Gas Line Below
ET84531: 3"X1000'
\$33.92ea



Buried Water Line Below
ET84535: 3"X100'
\$33.92ea



Vizcon Delineators & Cones

VZ42133-TRU212HIP: 42" w/ #12 base, delineator
VZ16018-NSWB-3: 18" non-reflective, 3# cone
VZ16028-NIWB-7: 28" w/ reflective strips, 7# cone
VZ16028-NSWB-7 28" non-reflective, 7# cone

GUARDIAN[®] FALL PROTECTION



GU10600: 2-Way Universal Standing Seam Roof Clamp. Temporary anchor for use with retractable lifelines. Personal Fall Arrest/Restraint. **For all applications: worker weight capacity range (including all clothing, tools, and equipment) is 130-420 lbs.**



GU15110: 24" Safety Swing Gate
GU15111: 36" Safety Swing Gate
Guardrail Gate System may be used in Fall Prevention Applications **ONLY!** For use on leading edge and fall hazards to prevent workers from going over an edge. Fits up to 2" diameter rails, Durable, Powder Coated, can also be mounted to angle iron.



Weighs only 38 lbs and lifts 1200 pounds. Pulls 15,000 lb loads on casters. Line speeds up to 50 fpm. High strength aluminum gear housing, light-weight reversible motor, ball and roller bearings, sealed gears & easy mounting.

GO12-15-RMO: 115V, 1200lb Load Capacity w/ Momentary switch, power winch.

GO12-15-RPNT: 115V, 1200lb Winch with (shown) drop pendant switch, power winch.



GU00645: CB-12—12" Post Anchor Point. Easy to install, compatible with horizontal lifelines, install onto wood, metal or concrete. Worker capacity range 130-420 lbs.



GU00656: CB-18 Anchor Point for Concrete Only. Durable, galvanized steel, compatible with horizontal lifelines. Worker capacity range 130-420 lbs.



GU00657: CB-18 Anchor Point for Metal or Wood. Durable, galvanized steel, compatible with horizontal lifelines. Worker capacity range 130-420 lbs.



GU00101: Beamer 2000 connects and moves smoothly along beams. Perfect for overhead or at foot level. Aluminum, Bronze Manganese, Zinc-Plated steel, and stainless steel finishes.



\$49⁰⁰

12 Piece Punch & Chisel Set
Rough and finishing tools
GW82305



\$79⁰⁰

23pc Combo 1/2" Drive Set
6 & 12 point socket set (SAE) **GW80707**

GEARWRENCH[®]



\$59⁰⁰

21 PC 3/8" Drive Socket Set
6 point Standard & Deep socket set (SAE) **GW80557**



\$107⁰⁰

15 pc Combo Wrench Set
SAE long pattern combination non-ratcheting wrench set. **GW81918**



\$49⁰⁰

12 pc Impact Socket Set
SAE 1/2" drive, 6 point, deep impact socket set **GW84942**

SPOKANE

(509) 535-9841
(800) 348-4808

BILLINGS

(406) 248-7196

YAKIMA

(509) 248-1144

GILLETTE

(307) 682-8522

SEATTLE

(206) 764-9488

BOISE

(208) 377-0158

EUGENE

(541) 342-3641

IDAHO FALLS

(208) 522-7082

MEDFORD

(541) 779-0187



1503 E. Riverside
P.O. Box 3437
Spokane, Washington 99220

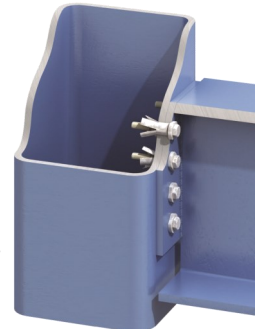
PRESORTED
STANDARD
U.S. POSTAGE
PAID
Spokane, WA 99201
Permit No. 888

lindapter



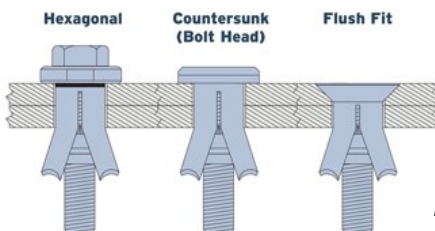
Edge has local inventory in the Northwest to support your jobs!

Generic Size	Product Code	Max. Clamping Range	Sleeve Diameter	Seismic Design Category Categories D,E,F *	
				LRFD Method Tensile (lb)	LRFD Method Shear (lb)
5/16"	LDLHBM08#1	1/4" - 7/8"	0.541"	3305	2675
	LDLHBM08#2	7/8" - 1-5/8"	0.541"	3305	2675
	LDLHBM08#3	1-5/8" - 2-3/8"	0.541"	3305	2675
3/8"	LDLHBM10#1	5/16" - 7/8"	0.699"	5485	4565
	LDLHBM10#2	7/8" - 1-5/8"	0.699"	5485	4565
	LDLHBM10#3	1-5/8" - 2-3/8"	0.699"	5485	4565
1/2"	LDLHBM12#1	5/16" - 1"	0.778"	7465	6250
	LDLHBM12#2	1" - 1-13/16"	0.778"	7465	6250
	LDLHBM12#3	1-13/16" - 2-3/4"	0.778"	7465	6250
5/8"	LDLHBM16#1	1/2" - 1-1/8"	1.014"	13330	9780
	LDLHBM16#2	1-1/8" - 2"	1.014"	13330	9780
	LDLHBM16#3	2" - 2-13/16"	1.014"	13330	9780
3/4"	LDLHBM20#1	1/2" - 1-5/16"	1.289"	19355	15330
	LDLHBM20#2	1-5/16" - 2-3/8"	1.289"	19355	15330
	LDLHBM20#3	2-3/8" - 3-3/8"	1.289"	19355	15330



Available in Zinc, Hot-Dipped, Stainless and other finishes

- Simple, cost-effective connections of HSS and other hollow sections
- Connections to conventional steel where access is available from one side only
- The Hollo-Bolt® can be used as a primary structural connection.



Hollo-Bolt Options

Hollo-Bolts are available in a range of head types for a variety of architectural finishes!

* Seismic Design category A-C have higher values



The Type **ALP** (Adjustable Lifting Point) is Lindapter's standard rigging and lifting solution that safely support loads up to 3.3 tons (6.6 kip) with a +/- 18° lift angle from the supporting steel.