



Construction Supply

# the cutting edge

innovative products and solutions from the construction experts  
[www.edgecs.com](http://www.edgecs.com) Valid through May 15, 2017

**PLUS \$1 PER FOOT DISCOUNT ON EVERY LADDER OR "ADDED DEAL"**  
**\$1.50 PER FOOT DISCOUNT ON 3 OR MORE**

**Fiberglass Step Ladders**

**FS-1500 SERIES**

- LOFS1504 4' .....\$69.00
- LOFS1505 5' .....\$82.00
- LOFS1506 6' .....\$87.00
- LOFS1508 8' .....\$115.00
- LOFS1510 10' .....\$181.00
- LOFS1512 12' .....\$226.00



Extended Handrail for Comfort & Safety!

**Fiberglass Twin Step Ladders**

**FM-1500 SERIES**

- LOFM1504 4' .....\$111.00
- LOFM1506 6' .....\$145.00
- LOFM1508 8' .....\$204.00
- LOFM1510 10' .....\$257.00
- LOFM1512 12' .....\$311.00



**Fiberglass Platform Ladders**

**FXP-1700 SERIES - 300LB**

- LOFXP1706 6' .....\$205.00
- LOFXP1708 8' .....\$259.00
- LOFXP1710 10' .....\$309.00
- LOFXP1712 12' .....\$388.00



**Fiberglass Tripod Ladders**

**FT-1000 SERIES**

- LOFT1004 4' .....\$113.00
- LOFT1005 5' .....\$126.00
- LOFT1006 6' .....\$143.00
- LOFT1008 8' .....\$178.00
- LOFT1010 10' .....\$260.00
- LOFT1012 12' .....\$294.00



**Fiberglass Extension Ladders**

**FE-3200 SERIES**

- LOFE3216 16' .....\$165.00
- LOFE3220 20' .....\$189.00
- LOFE3224 24' .....\$219.00
- LOFE3228 28' .....\$259.00
- LOFE3232 32' .....\$325.00



## CROSS-STEP LADDER

**2 IN 1 LADDER**

- LOFXS1504 4' .....\$79.95
- LOFXS1506 6' .....\$103.95
- LOFXS1508 8' .....\$140.95
- LOFXS1510 10' .....\$209.95
- LOFXS1512 12' .....\$256.95

**Cross-Step Ladder Series**

**FXS-1500 Series**



**NEW IMPROVED!**



**The only step ladder that can be folded & leaned against a wall that meets OSHA standards!**



1503 E. Riverside  
 P.O. Box 3437  
 Spokane, Washington 99220

PRESORTED  
 STANDARD  
 U.S. POSTAGE  
**PAID**  
 Spokane, WA 99201  
 Permit No. 888



**\$959**

Includes free VH5 blade

**K760II Power Cutter**

*A light, compact & powerful machine with superior power-to-weight ratio.*

**TA967181002**



**\$1225**

Includes free VH5 blade

**K970Ili Power Cutter**

*Robust & reliable. Less sensitive to outdoor conditions & fuel variations. Light and powerful*

**TA967348001**



**K760 CUT-N-BREAK**

*Enables you to cut as deep as 16" from one side. (high performing twin blades included with every Cut-N-Break purchase)*

**TA967195701**

**Ask your Edge sales rep about Dust Containment vacuum system for concrete cutting!**



VH5 for cured concrete

**TA542773241**

**FREE** with purchase of every K760II and K970Ili Power Cutters

**Do you need info on Core Rigs, Walk Behind, Soff-Cut Early Entry and other specialty concrete cutting tools and blades?**



**We have 4-1/2", 5" & 7" Segmented Cup Diamond Grinding Discs!**



# DEWALT

## XR FLEX VOLT



### THE POWER OF CORDED IN CORDLESS TOOLS!



THE WORLD'S FIRST BATTERY THAT AUTOMATICALLY CHANGES VOLTAGE WHEN YOU CHANGE TOOLS

Up To **4X** RUNTIME

**20V MAX** LITHIUM ION

**DEWALT FLEXVOLT**

**60V MAX** LITHIUM ION

More Than **3X** BATTERY POWER

### COMPATIBLE

Battery works with our fastest growing cordless system.

### EXPANDABLE

Line of dedicated powerful, 60V MAX Brushless tools.

**60V MAX** LITHIUM ION **the POWER of CORDED**

### THIS IS NEXT LEVEL POWER



**\$379**

**DTDCS575T2:**

60v 7-1/4" Circ saw kit with brake, charger, (2) 60V batteries and case

**60V MAX** LITHIUM ION



**\$479**

**DTDCD460T2:**

60V MAX VSR Stud & Joist drill kit w/ E Clutch System Includes charger, (2) 60V batteries and Case



**\$379**

**DTDCG414T2**

60V Max 4-1/2" grinder w/ kickback brake. Includes Charger, (2) 60V batteries and case.

More Than **3X** BATTERY POWER



**\$379**

**DTDCS388T2**

60V Max brushless recip saw. Includes charger, (2) 60V batteries and case

Choose one **FREE** w/ purchase of any 60v kit



**DTDCF899B:**  
1/2" Brushless Impact



**DTDCF897B**  
3/4" Impact



**DTDCS491B:**  
18ga Shears



**DTDCF887B:**  
1/4" Brushless Impact

**While Supplies Last**



**\$499**

**DTDCS7485T1:**

60V Max, 8-1/4" Table Saw



**DTDCB606-2:**

60v - 6.0Ah 2-battery pack



**DTDCB609:**

60V Max - 9Ah battery

**120V MAX** LITHIUM ION  
120V MAX OF REVOLUTIONARY POWER & FREEDOM



**60V X 2**  
**= 120V**  
**\$799**

**DTDHS790AT2:**

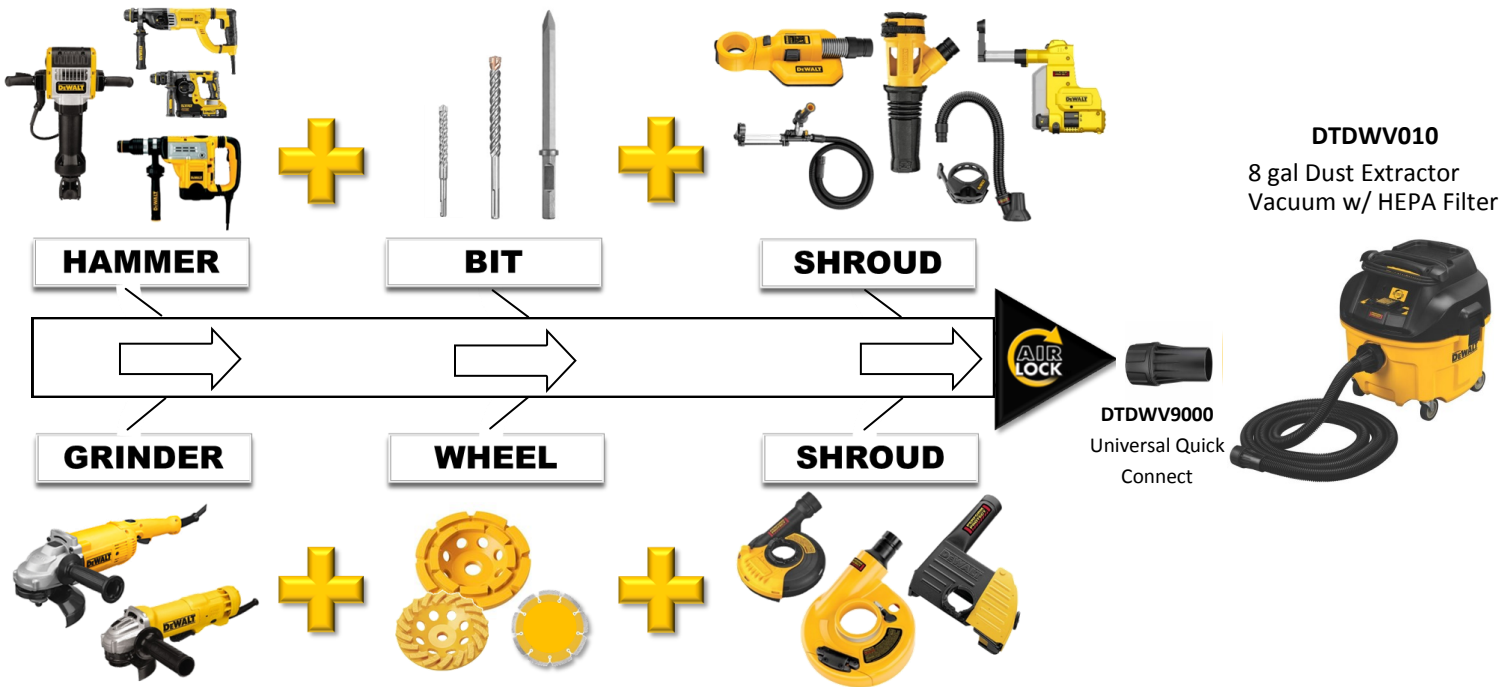
**120V** Max, 12" Double bevel sliding compound miter saw kit w/ outline blade position system. (can be used as a corded tool also)

Kit includes : Sliding miter saw, 2 x 60v Batteries, Charger and battery to cord adapter.

Use the 60V batteries with all your 20V tools for extended use time!

# DEWALTS DUST CONTAINMENT SOLUTIONS & PRODUCTS

**New Regulations Coming Soon!**



Let Edge help you better understand and comply with the new **OSHA 1926.1153** regulations for silica dust exposure coming June 2017!

**Ask your Edge sales representative for details!**



**DTDCH273P2 \$429**  
20V Max Brushless SDS 1" Rotary Hammer w./ (2) 5Ah batteries, charger and case.  
**Dust Extraction Ready**  
*(get a free DTDCF887B)*



**DTDCH133M2 \$269**  
20V Max XR Brushless 1" rotary hammer w/ (2) 4Ah batteries, charger & case.  
**Dust Extraction Ready**  
*(get a free DTDCF887B)*



**DTDCF887B**  
20V 1/4" 3-speed impact driver (bare tool only)  
**FREE** w/ either Hammer **KIT** shown



**DTDCH133B \$189**  
20V Max XR Brushless 1" rotary hammer Bare Tool Only.  
**Dust Extraction Ready**



**DTDCH273B \$269**  
20V Max Brushless SDS 1" Rotary Hammer. Bare only  
**Dust Extraction Ready**



**23-3/4" long**  
DTDWA58001 - 1/2"  
DTDWA58034 - 3/4"  
DTDWA58058 - 5/8"  
DTDWA58078 - 7/8"  
DTDWA58118 - 1-1/8"

**14-1/2" long**  
DTDWA54012 - 1/2"  
DTDWA54034 - 3/4"  
DTDWA54058 - 5/8"  
DTDWA54916 - 9/16"



**NEW!**

**"HOLLOW BIT"**

Bit extracts while drilling for less dust, fast holes and no hole cleaning required.  
Connects directly to vacuum for dust extraction!



**DTD28144(N) \$149**  
6" High Performance Angle Grinder



**DTDWE402 \$79**  
New 2 x's the life w/ oversized brushes  
**Next Generation Grinder**



**DTD28065(N) \$149**  
5"-6" High Performance Angle Grinder



**DTD28114(N) \$119**  
4 1/2" - 5" High Performance Angle Grinder



**DTD28499X \$199**  
7"-9" Large Grinder, High Performance

SPOKANE	SEATTLE	YAKIMA	EUGENE	MEDFORD	BILLINGS	GILLETTE	BOISE	IDAHO FALLS
1503 E. Riverside Ave. Spokane, WA 99202 (509) 535-9841 (800) 348-4808 (509) 534-3139 (Fax)	5419 Maynard Ave S. Seattle, WA 98108 (206) 764-9488 (206) 764-9487 (Fax) (800) 481-TOOL	812 E. Mead Yakima, WA 98903 (509) 248-1144 (800) 243-5582 (509) 575-4696 (Fax)	490 S. Bertelsen Eugene, OR 97402 (541) 342-3641 (800) 944-0165 (541) 343-1753 (Fax)	1789 Sage Rd. Medford, OR 97501 (541) 779-0187 (800) 871-3919 (541) 773-4599 (Fax)	120 Moore Lane Billings, MT 59101 (406) 248-7196 (800) 272-7196 (406) 248-7269 (Fax)	105 Warren Ave. Gillette, WY 82716 (307) 682-8522 (800) 670-6851 (307) 682-8576 (Fax)	2000 Century Way Boise, ID 83709 (208) 377-0158 (800) 528-5118 (208) 377-0978 (Fax)	760 W. Broadway Idaho Falls, ID 83402 (208) 522-7082 (208) 529-5456 (Fax)

MOTRDU4100:

**\$269ea**



- 10 Channel UHF
- RDX 4 Watt
- 200 mAh Lithium Ion Battery
- 350,000 sq ft / 30 floor capability
- Hands free mode (w/ compatible accessories)
- programmable radio
- Each radio comes with a single charger
- 1 year warranty

**BUY 5 GET 1 FREE**

**Motorola Accessories**



**\$56**

- **MOTHMN9026:**  
Remote Headphone Speaker
- **MOTRLN6309:**  
6 place charger station



**GRIPPLE® BRACING FOR THE FUTURE - ORIGINAL TOOL-LESS FITTING**

**Hanging Solutions**

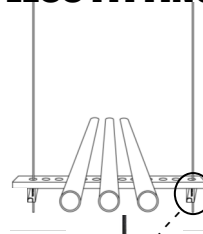
**“Save Time & Money”**

- Up to 6x's as fast as standard methods
- Aesthetically discreet and lightweight
- Hang **Duct, Pipe, Conduit, Equipment, Cable trays** & more with cable
- End fittings to connect to **Steel, Concrete & Wood structures**
- Safe working loads from **25 to 715 lbs.**
- Variety of lengths, sizes & configurations available

- No.1**  
0 - 25 lbs
- No.2**  
25 - 100 lbs
- No.3**  
100 - 200 lbs
- No.4**  
200 - 495 lbs
- No.5**  
495 - 715 lbs



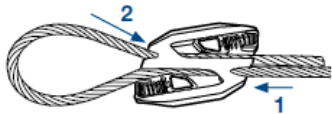
Duct Trapeze



Trapeze No.2 & No.3



Trapeze Plus No.2, No.3 & No.4 w/ 3:1 safety factor



**Gripple Tool-less fitting:** Insert line into #1, make a loop around object, pull wire back through #2 & adjust to exact desired length.

**Variety of Cable & End Fixings**

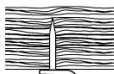
to attach to steel, concrete & wood structures



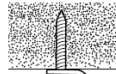
Bar Joist:  
Loop, wraparound w/  
Gripple top.



Eyelet  
Drilled or Screwed into  
wood



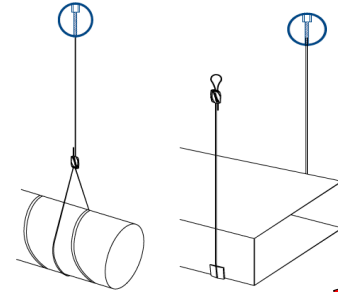
90° Eyelet



90° Eyelet  
Drill / Screwed into  
precast concrete



Stud:  
Concrete inserts,  
internally Threaded



**NEW**



Gripple Express

**Gripple Express:** The fastest locking device solution for fast suspension of a variety of services.

- Up to 6 times faster to install than traditional methods
- Keyless - no tool required for adjustment
- Ergonomic buttons allow rapid adjustment
- Discreet and aesthetic design
- XP1 load rated at 33 lbs with a 5:1 safety factor
- XP2 load rated at 100 lbs with a 5:1 safety factor
- Supplied as a ready-to-use kit

**Cast-in-Place & Metal Deck Inserts**



Metal Deck  
Insert Hanger

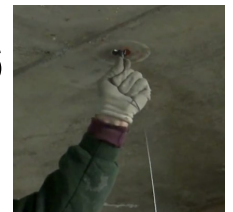


Spider Hanger  
for concrete  
(Cast-in-place)



Swivel Toggle  
used in both styles

Spider Hanger Kits: For Concrete cast-in-place and Metal Deck Applications. Swivel Toggle hanger inserts into spider & metal deck insert from below.



**Gripple Seismic Bracing Products:**



Ask your Edge Rep about complete job takeoff & quote to include stamped engineered drawings!

- OSHPD approved
- Can buy individual parts
- Can include vibration isolation



Engineered Systems  
[www.edgecs.com](http://www.edgecs.com)



Typical seismic bracing kit



# HitchClip™ Roof Jack, Bunk Jack and Hitch Pin Systems

The number 1 Staging area for workers, tools materials, and debris!



**GU10572 - Work Platform**

\*Plank not included



**GU10573 - Material Platform**

\*Lumber not included



Example of both accessories used together

## Simple to Install



1. Attach Hitchclip™ to roof with screws or nails above Roof Jack or Bunk Jack accessory

HitchClip™ #GU10560

remains on the roof for future use



2. Slide Roof Jack or Bunk Jack into HitchClip™

Slide Into HitchClip™



3. Insert adjustment pin(s) into installed Roof Jack or Bunk Jack to level to roof pitch



### Werner Pump Jack System

Easy to operate, Strong and durable, Simple to set up. **Nestable Planks**  
ANSI & OSHA Certifications

- 1 WEPJ-100: Aluminum Pump Jack
- 2 WEPJ-SBF: Foldable support brace
- 3 WEPJ-WB: Work Bench
- 4 WEPJ-ERN: End Rail Kit
- 5 WEPJ-6P: 6' Pump Jack Pole
- 6 WEPJ-12P: 12' Pump Jack Pole
- 7 WEPJ-24P: 24' Pump Jack Pole
- WEPJ-SN: Safety Netting
- WEPJ-PC: Pole Connector
- WEPJ-PF: Pole Foot



### Werner Planks & Railings

250 lb - 750 lb Load Capacity **Nestable** Stages in multiple lengths and widths

Optional Railings comes in Toe Board or Square Guard Rail, Cut in multiple lengths.

5

### Aluminum Scaffold Plank

(more lengths & widths available)

- WE2408: 14" x 8' - 2 person 500lb
- WE2412: 14" x 12' - 2 person 500lb
- WE2416: 14" x 16' - 2 person 500lb
- WE2420: 14" x 20' - 2 person 500lb
- WE2424: 14" x 24' - 2 person 500lb
- WE2428: 14" x 28' - 2 person 500lb
- WE2432: 14" x 32' - 2 person 500lb

# CALL FOR MORE INFORMATION



## SKUDO - Commercial Surface Protection System

Durable, Non-slip temporary surface protection for commercial jobs. Able to withstand machinery, shoring and the harshest environments. Designed for 12 months of interior projects and 9 month exterior projects.

**Available in HT—Heavy Traffic and MT Medium Traffic**  
**Need: Correct Mat for job, base coat glue & application rollers**

SD1061MAT-MT: 6.5'W X 123'L (800sq. ft./roll)

SD1070MAT-HT: 6.5'W X 123'L (800 sq. ft./roll)

SD1160-CONCRETE: Concrete base coat, 5 gal. pail

SD:1515: 9" Roller (3/8" mat)

SD1520: 18" Roller

SD1540: 5ft extension pole for rollers



Highly Durable weather proof protection for long term solutions

**Ask about Skudo Glass Advanced**



SFCS24200W: Carpet Shield  
 Multiple lengths & widths available



SFSC3001PB: Slip on shoe covers.  
 Designed to fit over boots.  
 (10pr/bag)

SFCM2436: Clean mat 24"X36"  
 SFCM3636: Clean mat 36"X36"  
 SFCM3645: Clean mat 36"X45"



**PLASTI-SHIELD**  
 Floor & Wall Protection

SFPLS4896W4:  
 4MM - 48" x 96" Corrugated PP sheet

Light corrugated plastic sheeting that is perfect for protecting walls and floors. Plasti-Shield is easy to cut, carry and is an excellent alternative to Masonite. A fire resistant option is also available.

Code Approved  
 3/4" long approved  
 seismic anchor

## The MINI-UNDERCUT+™ Internally Threaded Undercut Anchor



**Coming This Summer**



### Patent Pending Geometry

Patent pending design bites into concrete for undercut

### Threaded Sleeve

Internally tapped sleeve provides full thread engagement



SDS Stop bit and setting tool improves speed & reduces effort for faster installations



## General Application & Uses

- Tension zones, seismic and wind loading applications, Suspended Conduit
- Fire Sprinkler & pipe supports
- Cable Trays and Strut
- Suspended Lighting

## Features

- Ideal for precast hollow-core plank and **post-tensioned** concrete slabs
- **Cracked concrete** tested alternative to a mini drop-in anchor
- Redesigned ANSI carbide **stop bit** with enlarged shoulder for accurate depth
- Anchor design allows for shallow embedment as low as **3/4 of an inch**
- Internally threaded anchor for easy adjustment and removability of threaded rod or bolt
- Drill and drive the anchor with one tool for fast anchor installation

## Approvals

- International Code Council, Evaluation Service (ICC-ES), ESR-3912 for Concrete and Hollow-Core precast slabs, Code Compliant with the 2015, IBC, 2015 IRC, 2012 IBC, 2012 IRC, 2009 IBC, and 2009 IRC.
- Qualified according to ACI 355.2 (including ASTM E 488) for use in concrete
- FM Approvals (Factory Mutual) – File No. J.I. 3059197

# Python - Tool Safety Lanyards



## Fall Protection for Tools

DBI-SALA® Fall Protection for Tools makes work environments safer and more productive by drastically reducing falling object incidents resulting in personal injury, equipment damage, and tool loss. Our drop prevention solutions are designed with the craft in mind, and are third-party tested in the harshest possible conditions.



**Ridgid 700 Power Drive: RI41935:**  
Hand held Model 700 Power Drive Threader. 1/8" to 2" pipe capacity. Designed for Ridgid model 12-R Die Heads. Other Ridgid Die Heads (OO-R, OO-RB, 11-R) can be used with adapters.



**Ridgid 300 Power Drive Threader RI:15682** 1/2" - 2" Portable pipe threader.

**B-500 Transportable Pipe Beveller RI49298**



Set-up and bevel 12" diameter schedule 40 pipe in under 2 minutes!  
Capacity - 4" pipe and larger, flat plate  
Pipe wall/plate thickness - Min 0.188" /max 0.50"  
Cutter Head - Rated for most steel & stainless steel

**Ridgid Tristand Chain Vise- RI36273:**  
Crank handle is anchored to base, Capacity 1/8" through 8".

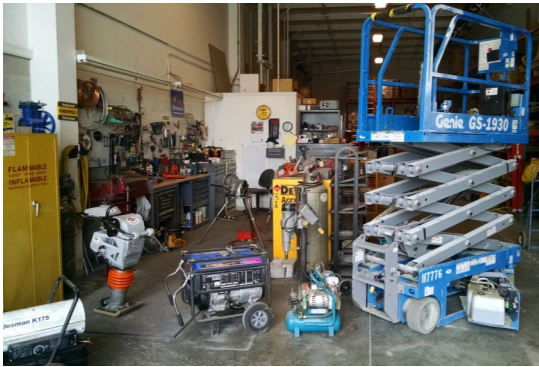


# Service & Repair

We service Scissor Lifts, Material Lifts, Hoists, Heaters, Power Tools, (hydraulic, pneumatic & electrical) and more. Ask your Edge representative for details or visit our Repair Department!

**Free Estimates**  
**Quick Turnaround**  
**Professional Service**  
**www.edgecs.com**

**Fix your tools now before the spring rush!**



SPOKANE	SEATTLE	YAKIMA	EUGENE	MEDFORD	BILLINGS	GILLETTE	BOISE	IDAHO FALLS
1503 E. Riverside Ave. Spokane, WA 99202 (509) 535-9841 (800) 348-4808 (509) 534-3139 (Fax)	5419 Maynard Ave S. Seattle, WA 98108 (206) 764-9488 (206) 764-9487 (Fax) (800) 481-TOOL	812 E. Mead Yakima, WA 98903 (509) 248-1144 (800) 243-5582 (509) 575-4696 (Fax)	490 S. Bertelsen Eugene, OR 97402 (541) 342-3641 (800) 944-0165	1789 Sage Rd. Medford, OR 97501 (541) 779-0187 (800) 871-3919	120 Moore Lane Billings, MT 59101 (406) 248-7196 (800) 272-7196	105 Warren Ave. Gillette, WY 82716 (307) 682-8522 (800) 670-6851	2000 Century Way Boise, ID 83709 (208) 377-0158 (800) 528-5118	760 W. Broadway Idaho Falls, ID 83402 (208) 522-7082 (208) 529-5456 (Fax)