



Construction Supply

# the cutting edge

innovative products and solutions from the construction experts

www.edgecs.com

March - April 2015

## FACTORY SPONSORED REBATE

Fiberglass  
Step  
Ladders  
FS-1500 SERIES

LOFS-1504	
4'.....	\$69.00
LOFS-1505	
5'.....	\$82.00
LOFS-1506	
6'.....	\$87.00
LOFS-1508	
8'.....	\$115.00
LOFS-1510	
10'.....	\$181.00
LOFS-1512	
12'.....	\$226.00



Modified tool organizer  
with magnetic spots for  
tools & supplies.

Extended Handrail for  
Comfort & Safety!

Fiberglass  
Twin Step  
Ladders  
FM-1500 SERIES

LOFM-1504	
4'.....	\$111.00
LOFM-1506	
6'.....	\$145.00
LOFM-1508	
8'.....	\$204.00
LOFM-1510	
10'.....	\$257.00
LOFM-1512	
12'.....	\$311.00



Fiberglass  
Platform  
Ladders  
NEW  
FXP-1700 SERIES - 300LB

LOFXP-1706	
6'.....	\$205.00
LOFXP-1708	
8'.....	\$259.00
LOFXP-1710	
10'.....	\$309.00
LOFXP-1712	
12'.....	\$388.00



Fiberglass  
Extension  
Ladders  
FE-3200 SERIES

LOFE-3216	
16'.....	\$162.00
LOFE-3220	
20'.....	\$186.00
LOFE-3224	
24'.....	\$214.00
LOFE-3228	
28'.....	\$255.00
LOFE-3232	
32'.....	\$318.00



**PLUS...**  
**\$1<sup>00</sup> OFF**  
**PER FOOT**  
**Manufacturers**  
**Instant**  
**Rebate!**

all prices f.o.b. shipping point



Fiberglass  
Tripod  
Ladders  
FT-1000 SERIES

LOFT-1004	
4'.....	\$113.00
LOFT-1005	
5'.....	\$126.00
LOFT-1006	
6'.....	\$143.00
LOFT-1008	
8'.....	\$178.00
LOFT-1010	
10'.....	\$260.00
LOFT-1012	
12'.....	\$294.00

SPOKANE  
1503 E. Riverside Ave.  
Spokane, WA 99202  
(509) 535-9841  
(800) 348-4808  
(509) 534-3139 (Fax)

YAKIMA  
812 E. Mead  
Yakima, WA 98903  
(509) 248-1144  
(800) 243-5582  
(509) 575-4696 (Fax)

EUGENE  
490 S. Bertelsen  
Eugene, OR 97402  
(541) 342-3641  
(800) 944-0165  
(541) 343-1753 (Fax)

MEDFORD  
1789 Sage Rd.  
Medford, OR 97501  
(541) 779-0187  
(800) 871-3919  
(541) 773-4599 (Fax)

BILLINGS  
120 Moore Lane  
Billings, MT 59101  
(406) 248-7196  
(800) 272-7196  
(406) 248-7269 (Fax)

GILLETTE  
105 Warren Ave.  
Gillette, WY 82716  
(307) 682-8522  
(800) 670-6851  
(307) 682-8576 (Fax)

BOISE  
2000 Century Way  
Boise, ID 83709  
(208) 377-0158  
(800) 528-5118  
(208) 377-0978 (Fax)

IDAHO FALLS  
760 W. Broadway  
Idaho Falls, ID 83402  
(208) 522-7082  
(208) 529-5456 (Fax)

# TurboTorch®



**TT0386-1295**  
Turbo Torch Kit w/  
TX-504 Head,  
Adapter, Hose &  
Regulator



**TT0916-0122**  
Turbo MPT-1  
MAP-Pro fuel  
14.1 oz



**TT0916-0004**  
Turbo PT-1  
Propane  
14.1 oz



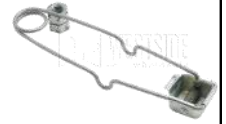
**TT0386-1293**  
Turbo TX504  
hand torch, self  
igniting



**TT0387-0464**  
Firepower SMPK-31  
Torch Kit, self light-  
ing w/ propane tank



**TT0387-0465**  
SMP41 Propane  
- MAP



**TT1423-0023**  
L-1 Single  
Flint Striker  
spark light



**Nilfisk**  
trusted since 1906

**Aero:**  
NK107406620: 5 Gal  
NK107406623: 6 Gal  
NK107406623: 8 Gal

5 Pack vac bags in stock

**Connect Direct to Dust  
Shroud Systems!**



**Attix:**  
NK302004230: 8 Gal  
NK302004234: 12 Gal

**59(dB(A)) working sound level**

Washable Fleece and HEPA  
filters available for the Attix  
Models!

**Connect Direct to Dust Shroud  
Systems!**



**Werner Pump Jack System**  
Easy to operate, Strong and durable,  
Simple to set up. **Nestable Planks**  
ANSI & OSHA Certifications  
**WEPJ-100:** Aluminum Pump Jack  
**WEPJ-6P:** 6' Pump Jack Pole  
**WEPJ-12P:** 12' Pump Jack Pole  
**WEPJ-24P:** 24' Pump Jack Pole  
**WEPJ-SN:** Safety Netting  
**WEPJ-ERN:** End Rail Kit  
**WEPJ-PC:** Pole Connector  
**WEPJ-PF-4:** Pole Foot  
**WEPJ-WB:** Work Bench



**Werner Planks & Railings**  
250 lb - 750 lb Load Capacity **Nestable**  
Stages in multiple lengths and widths  
Optional Railings comes in Toe Board  
or Square Guard Rail, Cut in multiple  
lengths.

**Ask your Edge Sales Representative  
for sizes and options available to you**

Spokane  
(509) 535-9841



Yakima  
(509) 248-1144

Billings  
(406) 248-7196

Gillette  
(307) 682-8522



Boise  
(208) 377-0158

Idaho Falls  
(208) 522-7082



Eugene  
(541) 342-3641

Medford  
(541) 779-0187



**\$139**



While Supplies Last

# HOT BUYS!

**MI2494-22: 12V Kit**

Includes the following

- 38" Drill/Driver
- 1/4" Hex Impact Driver
- (2) REDLITHIUM Batteries
- Lithium-ion Battery Charger
- Contractor Bag



**\$199**

**DTDCK290L2: 20V MAX Lithium Ion Hammerdrill / Impact Driver Combo Kit**



**\$399**

**DTD25501K:**  
1-9/16" SDS Max Combo Hammer Kit, 12 Amp motor w/ overload protection



**\$399**

**DTD25553K:**  
1-9/16" Spline Combo Hammer Kit, 12 Amp motor w/ overload protection



**\$499**

**DTD25601K:**  
1-3/4" SDS Max Combo w/ Shocks Active Vibration Control, 2 stage clutch, 13.5 Amp high performance motor.

**GET \$125.00 IN FREE CARBIDE OF YOUR CHOICE WHEN YOU BUY ANY OF THESE THREE HAMMERS!**



**\$209**

**DTD25213K:**  
1" D-Handle Three Mode SDS Rotary Hammer, 8 Amp motor w/ overload protection, Variable Speed Trigger

**GET \$75.00 IN FREE CARBIDE OF YOUR CHOICE WHEN YOU BUY THIS HAMMER**



**\$100 OFF**



**WHEN YOU PURCHASE A QUALIFYING M18 FUEL™ KIT**

*And TRADE-IN a 14.4V or greater professional grade cordless tool with 2 or more batteries*

**\$529**

**4-Tool Kit MI2796-24**



4-Tool Kit  
Drill, Impact, Sawzall & flashlight.  
Includes 2 batteries and charger

**\$429**

**Bandsaw Kit MI2729-21**



Bandsaw kit  
Includes 1 Battery & Charger

**\$369**

**2-Drill Kit MI2797-22**



2-Tool Combo Kit  
1/2" Hammer Drill, 1/4" Hex Impact, 2 Batteries & Charger

**\$309**

**3/8" Impact Kit MI2654-22**



3/8" Impact with 2 Batteries & Charger with Friction Ring Kit

**\$385**

**1/2" Impact Kit MI2763-22**



1/2" Impact with 2 Batteries & Charger With Friction Ring Kit

**\$425**

**HoleHawg™ MI2707-22**



Hole Hawg® Kit  
1/2" Right Angle Drill  
2 - XC 4.0 batteries, Charger, Chuck Key and Contractor Bag



**Corded Sawzalls Kits**

**MI6509-31: 12 Amp, 3/4" stroke**

**\$109**

**MI6536-21: Super Sawzall 13Amp Orbital Recip Saw**

**\$149**



Deep Cut Variable Speed Band Saw 11 Amp, 5" X 5" Capacity

**MI6232-20: \$229**

**MI6232-21: w/ Case \$239**



**QwikLine™  
Thread  
Chaser**



Repair damaged Bolt and Coil Rod threads quick and easy with the new **Qwikline™ Thread Chaser**.



If we don't have a size you need, we can make it!

**MADE IN THE U.S.A.**



ORIGINAL **DAWSON CHANNEL SOCKET**

*If you fix steel channel or strut, you need this tool. This Channel socket will not get stuck when the bolt /nut is tightened down!!*

Item#: **CNCSM12E**



Purchase online at

**[www.edgecs.com](http://www.edgecs.com)**



**NEW SAMMYS® FOR CRACKED CONCRETE , SEISMIC, AND STANDARD APPLICATIONS**

**Features:** Industry's only Swivel, Side and Vertical anchor Trio for fast installations

**Fire Sprinkler Systems : HVAC Systems : Electrical Systems  
Trapeze Assembly : Lighting : Signs**

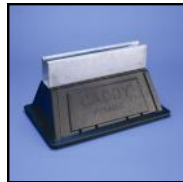
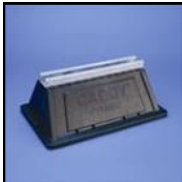


Third party approvals include the following:

- ICC-ESR-2022 Cracked Concrete/Seismic
- 2012,2009 International Building Code (IBC)
- 2012,2009 International Residential Code (IRC)
- Uniform Building Code

More information at **[www.edgecs.com](http://www.edgecs.com)**

Vertical: **RABX8306957** - Horizontal Threading: **RABX8307957** - Swivel Head: **RABX8308957**



**Strut Based Roof Supports**

**CAPSF6C:** 4" h X 6" l, 300 lb static load capacity

**CAPSF10C:** 4" h X 10" l, 1000 lb static load capacity

**CAPSF10D:** 6" h X 10" l, 1000 lb static load capacity

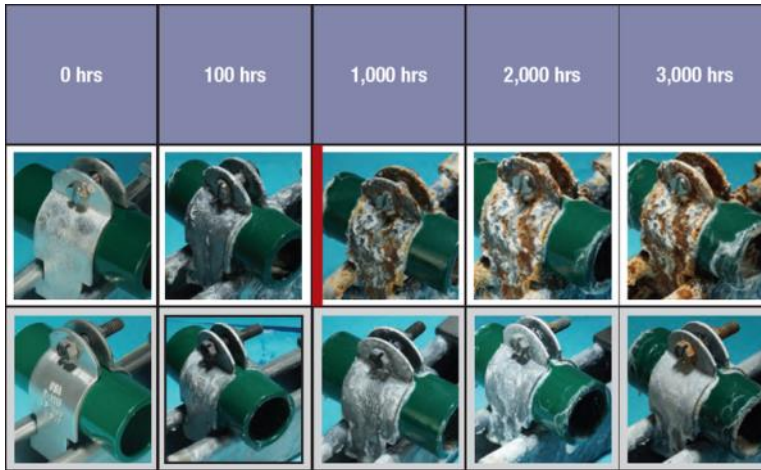






**Need an alternative for Hot Dipped Galvanized for your project?**

# Corrosion-Resistant Product Line



Why Use Unistrut Defender

- **3X the Corrosion-Resistant performance of Hot-Dip Galvanized**
- Avoids costly stainless steel hardware
- Low maintenance - eliminating the need to replace parts over time
- Unique self-healing properties - Don't need to touch-up cut ends
- Significant cost savings over life of the job

**Ask your Edge sales rep today!**

\*Patent Pending

## FOOD GRADE STRUT

Food Grade Strut is the premier sanitary mounting system for piping and conduit in food processing and pharmaceutical companies across North America.

- Easy to inspect and clean
- Used in numerous food processing companies
- Corrosion resistant 304/316 Stainless Steel
- 1', 2', 4' 8' and 10' pre-cut, pre-de-burred lengths
- No areas for debris and contaminants to collect
- Easy to wash down



**NEED A SANITARY PRODUCT?**



**Data Vault Mobile - Compact**

- KN118-M:** New Compact Design
- 32" Monitor & Wiring Harness
  - Back Up Power Supply
  - "Junk Trunk" quick access drawer



**Data Vault**  
**KN118-01:**

- 40" Monitor & Wiring Harness
- Back Up Power Supply
- Printer
- USB Switch & Hub
- Surge Protector



**Data Vault: For Customization**  
**KN118-02:**

- Includes Wiring Harness Only
- Ready to connect your own Monitor, Power and Computer.



Construction Supply

# ELECTRICAL TOOLS



## RE 6

### ELECTRICAL TOOL 3-in-1



Introducing the World's Most Versatile Electrical Tool, Featuring the Innovative 3-in-1 RIDGID® QuickChange System™.



### Benefits

- ◆ Cut wire, crimp lugs and punch boxes with just one tool via the patent-pending RIDGID Quick change System.
- ◆ Eliminates trips back and forth to the truck searching for different tools
- ◆ 3-in-1 tool saves valuable cargo space
- ◆ Inline design for easy, one-handed operation even in tight spots.
- ◆ Industry-leading service interval maximizes uptime on the job site.

### Specifications

- ◆ 6-ton hydraulic force output to cut and crimp up to 750 kcmil (MCM) and knockout punch up to 3.5"
- ◆ Automatic ram retraction when cutting and crimping
- ◆ 360° head rotation increases maneuverability
- ◆ Bright white LED workspace illumination light
- ◆ Rubber overmolded grips for superior comfort and control
- ◆ Nylon straps allow easy tethering or hoisting
- ◆ Approximate cycle time: 5 seconds
- ◆ Service Interval: 32,000 cycles
- ◆ Weight: 6.41 lbs w/ battery
- ◆ Kit includes: RE 6 Electrical Tool, , SC-60C Scissor Cutter, 4P-6 4PIN™ Dieless Crimp Head, PH-60B Punch Head, (2) 18V Advanced Lithium 2 Batteries, Charger and blow-molded case.



Featuring the **RIDGID QuickChange System™**

Item #	Description	Weight (lb)
RI44343	RE 6 Electrical Tool Kit w/SC-60C Scissor Cutter, 4P-6 4PIN™ Dieless Crimp Head, PH-60B Punch Head, Two 18V Advanced Lithium 2 Batteries and Charger.	30.4 (kit)



The original Expansion Bolt for Structural Steel. Suitable for hollow sections, tubes and where access is available from one side only.



Available in multiple size diameter and lengths

This product is available in Zinc or Hot Dip Galvanized finishes



*We have a large inventory - Call us today!*

[www.edgecs.com](http://www.edgecs.com)