



Construction Supply

# the cutting edge

innovative products and solutions from the construction experts

Sept 15 - Oct 31, 2014



## ICC-ES approved

for compliance with the International Building Code\*

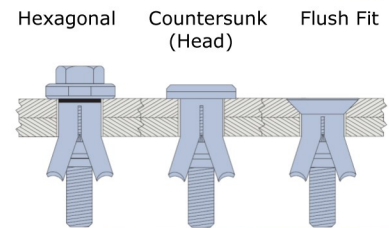


ICC-ES has published Evaluation Report ESR-3330 for designing Hollo-Bolt connections to LRFD and ASD methods. This assures both building officials and the wider building industry that Lindapter's 'Original Expansion Bolt for Structural Steel' meets I-Code requirements. Download the full Evaluation Report today at [www.edgecs.com](http://www.edgecs.com) or from the ICC-ES website: [www.icc-es.org/Reports/pdf\\_files/ESR-3330.pdf](http://www.icc-es.org/Reports/pdf_files/ESR-3330.pdf)

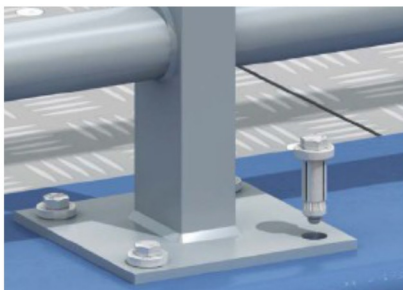


Contact Edge today for the Hollo-Bolt

ITEM NUMBER	GENERAL SIZE	CLAMPING RANGE
LDLHBM08#1	5/16"	1/8" - 7/8"
LDLHBM08#2	5/16"	7/8" - 1-5/8"
LDLHBM08#3	5/16"	1-5/8" - 2-3/8"
LDLHBM10#1	3/8"	1/8" - 7/8"
LDLHBM10#2	3/8"	7/8" - 1-5/8"
LDLHBM10#3	3/8"	1-5/8" - 2-3/8"
LDLHBM12#1	1/2"	1/8" - 1"
LDLHBM12#2	1/2"	1" - 1-13/16"
LDLHBM12#3	1/2"	1-13/16" - 2-3/4"
LDLHBM16#1	5/8"	1/2" - 1-1/8"
LDLHBM16#2	5/8"	1-1/8" - 2"
LDLHBM16#3	5/8"	2" - 2-13/16"
LDLHBM20#1	3/4"	1/2" - 1-5/16"
LDLHBM20#2	3/4"	1-5/16" - 2-3/8"
LDLHBM20#3	3/4"	2-3/8" - 3-3/8"



\*Available in zinc or hot dig galvanized finishes. Please call for availability of Stainless Hollo-Bolts.  
\*Typical head style is Hex, additional head variations are available on request (see right).



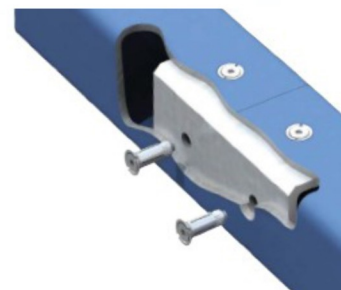
**SPOKANE**  
1503 E. Riverside Ave.  
Spokane, WA 99202  
(509) 535-9841  
(800) 348-4808  
(509) 534-3139 (Fax)



**YAKIMA**  
812 E. Mead  
Yakima, WA 98903  
(509) 248-1144  
(800) 243-5582  
(509) 575-4696 (Fax)



**EUGENE**  
490 S. Bertelsen  
Eugene, OR 97402  
(541) 342-3641  
(800) 944-0165  
(541) 343-1753 (Fax)



**MEDFORD**  
1789 Sage Rd.  
Medford, OR 97501  
(541) 779-0187  
(800) 871-3919  
(541) 773-4599 (Fax)



**BILLINGS**  
120 Moore Lane  
Billings, MT 59101  
(406) 248-7196  
(800) 272-7196  
(406) 248-7269 (Fax)

**GILLETTE**  
105 Warren Ave.  
Gillette, WY 82716  
(307) 682-8522  
(800) 670-6851  
(307) 682-8576 (Fax)

**BOISE**  
2000 Century Way  
Boise, ID 83709  
(208) 377-0158  
(800) 528-5118  
(208) 377-0978 (Fax)

**IDAHO FALLS**  
760 W. Broadway  
Idaho Falls, ID 83402  
(208) 522-7082  
(208) 529-5456 (Fax)



THE M. K. MORSE COMPANY

1963 FIRST 50 YEARS 2013



Item #MKAV02E  
Hole Saw Kit, 8 Pc

**\$69.00**

Bi-Metal hole saw electrical kit. High speed steel cutting edge with a hardened steel backer. Positive rake, variable pitch teeth. Teeth per inch 4/6.

Features: Contains pipe tap sizes for pipe through 2" Saws (1 each): 7/8", 1-1/8", 1-3/8", 1-3/4", 2" & 2-1/2" 2 Arbors

Additional Hole Saw Kits In Stock!

Item #MKAV04P: 3/4" - 2-1/4" **\$69.00**

Item #MKAV08E: Up to 4" **\$149.00**



Item #MKMK0600L  
Bi-Metal Hole Saw Kit, 8 Pc **\$95.00**

Bi-Metal hole saw electricians kit. Improved control of the cutting process with excellent chip clearing capacity. 7/8", 1-1/8", 1-3/8", 1-3/4", 2" & 2-1/2" saws

Features: More teeth, deeper gullets that result in better cutting action and material removal, and a new tooth form that maximizes penetration into the material being cut. Cutting depth is suitable for professional users.

Advanced Edge Technology

**CALL FOR A DEMO**



Item #: HGMD904C Portable Magnetic Drill Press  
Rear positioned controls are easily accessible and ergonomically designed. Feed handles can be easily switched to either side. Safety switch indicator tells the operator when the lift sensor is engaged. **\$875.00**



Item #: HG-12002 Rotabroach Magnetic Drill Cutter Kit  
Patented Hougen Edge Geometry: Provides faster, smoother cuts, with less chatter. Ground and Fully Fluted providing better chip evacuation, requires less HP and offers better performance in deeper holes. Series 2-Inch D.O.C.

**\$279.00**

Edge Sharpens Cutters Also!!!



**\$620.00**



**\$699.00**

KN127 Knaack Saddle Box  
Extra Deep -  
24"H x 20 1/4"W x 71 1/4"L

KN116 Knaack Saddle Box  
Extra Wide  
18 1/2"H x 27 1/2"W x 71 1/4"L



Kett: 18 Gauge  
Double Cut Shear

Item #: KEKD-400  
Cuts over 300 inches per minute. Replaceable Shear Blades. Pistol grip electric motor.



**\$155.00**



PKE6021 Center Blade  
PKE6022L Left Blade  
PKE6022R Right Blade  
Replacement Blades

Fiber Cement Shears

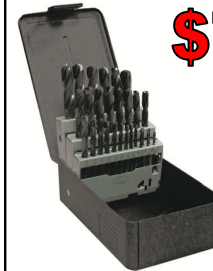
Item #: KEKD-1493  
For cement board up to 1/2" thick. Variable cutting speeds up to 2500RPM



**\$79.00**



29-Piece Drill Bit Set  
Item #: TR99803



1/16" to 1/2" (1/64" increments).  
Black oxidized finish, Flute type twist, Type jobbers length for Heavy Duty use.



**Buy one - Get one FREE**

On all Vise-Grip products at Edge Construction Supply! Many models to choose from!

Spokane  
(509) 535-9841

Billings  
(406) 248-7196

Boise  
(208) 377-0158

Eugene  
(541) 342-3641

Yakima  
(509) 248-1144

Gillette  
(307) 682-8522

Idaho Falls  
(208) 522-7082

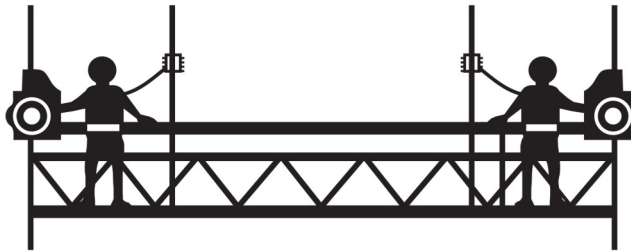
Medford  
(541) 779-0187

Are you are looking for multi-person platforms, single person cages or Bosun chairs to help you access something?

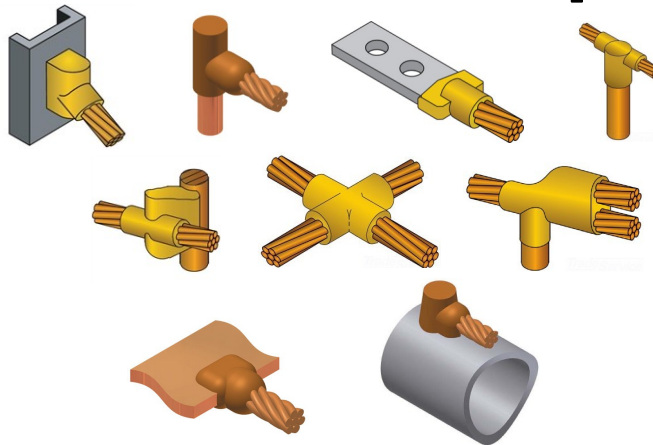


# At Edge We Rent - Repair - Sell

These fine products



## Endless Connection Options



Contact your Edge Sales Rep for all your CADWELD Connection Possibilities!

Edge has a large stock of Molds & Weld Metals

## Visit EDGE's Repair Department



For more information on repairs contact us at:

[repair@edgecs.com](mailto:repair@edgecs.com)

509-535-9841



Edge Construction Supply offers a complete repair department with factory-trained technicians servicing virtually all makes of equipment. We understand what you have invested in your tools and know that machines need attention, service and maintenance for optimum performance year in and year out. We accomplish quick turnaround and efficient tracking of our customers' tool repairs from start to finish. As always, we repair, stock, and service parts for our extensive tool and equipment inventory.

FREE estimates and quick turn-a-round times

# Now is the time to get your Heaters repaired!

Made In The  
**U.S.A.**

**WINGCO**

When you need Power  
Go for the BIG DOG!!!



**SALE**

Item #: WGWL12000HE

**\$3475<sup>00</sup>**

Specs

- 120/240 Volt
- 90/45 amps
- 5 hp Honda
- 9 Hr run time
- Electric Start
- 3 year warranty

Features

- 6 x 120 V Receptacles (20A)
- 1 x 240 V Receptacle (30A)
- 1 120/240 V Receptacle (60A)



**Dawson Channel Socket**

Item #: CNCSM12E

For 1/2" HDWE, Deep Strut.

**\$59<sup>57</sup>**

**\$5<sup>99</sup>**

Item #: W5B  
5 Gal Bucket  
.070 wall thickness



**www.edgecs.com**

- CFK610-027: 10 Person kit Poly ..... **\$16**
- CFK610-028: 10 Person kit Metal ..... **\$25**
- CFK610-029: 25 Person Kit Poly ..... **\$21**
- CFK610-030: 25 Person kit Metal ..... **\$27**
- CFK610-033: 50 Person Kit Poly ..... **\$34**
- ★ CFK606-217: 24 Person 1st Aid BBP..... **\$49**

★ Blood Born Pathogen Kit!



**\$14**

COL09022-88-02  
"Y" Adapter 20A  
Twist to Lock



**\$20**

COL09019-88-02  
"W" Adapter 15A



COL26020-008-6  
GFCI Adapter 20A  
2 ft, Triple Tap



**Power Receptacle Connectors**  
DW1547 (female) &  
DW1447 (Male)  
Additional Styles in Stock

**Push Button Power Controllers**  
2, 4, 6 & 8 Button

Extension Cord "Y" & "W" Connectors: STW Jacket, 12 gauge, 3 conductor, 20A locking ends. Choose a 2 outlet or 3 outlet adapter.



**Extension Cords**

- COL02588-00-02: 50 ft **\$35<sup>99</sup>**
- COL02589-00-02: 100 Ft **\$59<sup>00</sup>**

Vinyl jacket resists moisture, Three conductor lighted end. Meets OSHA requirements for outdoor use



**REELCRAFT**



Reelcraft Light Duty  
Power Cord Reels



Reelcraft Heavy Duty  
Power Cord Reels

**Call for Pricing**

Sumner leads the pack with a comprehensive line of Jack Stand products and offers the best selection of Roll Stands and head options in the industry



**\$59<sup>99</sup>**

SU780375

**Heavy Duty Hi Jack Stands**

The heavy Duty Jack is the first commercially produced jack stand constructed of rugged 1" steel tubing. **2500 lb capacity**



**\$86<sup>99</sup>**

SU780376



**\$69<sup>99</sup>**

SU781300

**Fold-A-Jack**

Folds up for storage ease. 1" square tube base construction. **2500 lb capacity**



**\$569<sup>99</sup>**

SU781403

**Max Jax**

Optional Casters enable pipe to be easily wheeled around. **2500 lb capacity**



**\$219<sup>99</sup>**

SU780441

**Pro Roll**

Adjustable Height of 29" to 43". Leveling on either side of stand. Wheels "trued" for even pipe rotation. **2000 lb capacity**



**Ultra Clamp**

SU781130 1-2 1/2"  
SU781150 2 - 6"  
SU781170 5 - 12"  
Rugged frame, built for jobsite use. Fine adjustment screws for quick fit-up.



**ULTRA Qwik Clamp**

SU781510.....1 - 2-1/2" (Sm)  
SU781520.....2-6" (Med)  
SU781530.....5-12" (Lg)  
Push button design allows for rapid action setting and fine tune threaded adjustment



**Hold-E Pipe Clamp**

SU785000  
Push button design allows for rapid action setting and fine tune



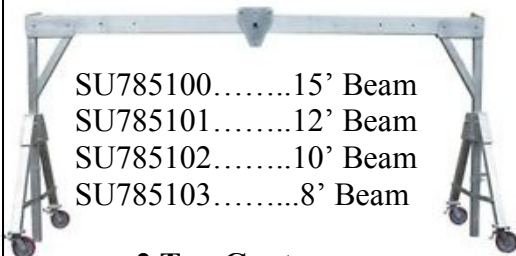
**Roust-a-Bout**

SU780301.....15ft  
SU780303.....25ft  
Moves vertically and horizontally. Ideal for job site or shop. **1500 lb capacity**



**Cricket**

Transport 20ft pipe lengths up to 1000 lbs. Comes with ratchet hold-down strap and 16" tube tires.



SU785100.....15' Beam  
SU785101.....12' Beam  
SU785102.....10' Beam  
SU785103.....8' Beam

**2 Ton Gantry**

Lightweight & portable, quick two-person assembly, Aluminum frames and beam, Unassisted height adjustment.

\*\*3/4 Ton Gantry has available 10" oversized rubber tires for rooftop use.



**3/4 Ton Gantry \*\***

Also available with 8', 10', 12' & 15' beams



Easily Move HVAC units On Rooftops!



**Contractor Lift - 2100**

SU783651.....18 ft  
SU783652.....24 ft  
Unmatched as a good all around contractor lift. **650 lb capacity**

**Sumner Available for Online Purchasing Soon!**



**CLC: Hi-Viz Rain Gear  
Polyester ANSI Class 3**

Item #:  
CSR111M  
CSR111L  
CSR111XL  
CSR111XXL  
CSR111XXXL

**\$49<sup>75</sup>**

*Deluxe quality ANSI-rated,  
3-piece polyester rain suit in  
Hi-Viz lime-yellow and class 3  
certified retro-reflective stripes.*



**\$20<sup>90</sup>**

**CLC: Industrial Kneeling Pad  
Silicone Free Material**

Item #: CS302 - 14"x21"



**\$19<sup>99</sup>**

**Ultraflex Non-Skid Pro Kneepads  
Professional Grade**

Item #: CS361 *Soft out shell with accordion-style upper cap. One size fits all*

**\$22<sup>80</sup>**



**Heavy Duty Leather Kneepads  
Professional Grade**

Item #: CS313  
*Top grain leather with double-thick felt padding  
for added comfort. Adjustable leather straps with  
steel buckles allows you to quickly put on and  
take off. One size fits all*

**\$16<sup>99</sup>**



**48 Pocket Bucket Organizer**  
Item #: CS1119  
*(bucket sold separately)*

**\$69<sup>99</sup>**



**48 Pocket-Tool Backpack**  
Item #: CS1134

**\$39<sup>99</sup>**



**23 pocket Softside Pouch  
Electrical & Maintenance**  
Item #: CS1526

**\$35<sup>99</sup>**



**Professional Gel Kneepads**  
Item #: CSG430

**\$995<sup>00</sup>**



**Hilman Rollers - 8 Ton Riggers Kit**  
Item #: HIKRS-8-4S  
Swivel and Padded Heads with Steering Handles



**Bull Dolly Kit**  
Item #: HIKBSD-24P  
24 Ton Kit

*Polyurethane Wheels will not mar  
concrete and most other floors.  
Also available with Nylon Wheels*



**FT Series Roller Sets**  
HIKRS-40-SLD .....40 Ton Set  
HIKRS-60-SLD .....60 Ton Set  
Swivel-Locking diamond steel grid  
tops and loose preload pads with  
steering bars.



**Hilman - 10 Ton Toe Jacks**  
Item #: HIHJT-10  
Swivel and Padded Heads with  
Steering Handles



**Spokane**  
(509) 535-9841



**Billings**  
(406) 248-7196



**Boise**  
(208) 377-0158



**Eugene**  
(541) 342-3641

**Yakima**  
(509) 248-1144

**Gillette**  
(307) 682-8522

**Idaho Falls**  
(208) 522-7082

**Medford**  
(541) 779-0187