



Construction Supply

EDGE CONSTRUCTION SUPPLY'S MISSION

To provide contractors and professionals with cutting edge tools, efficient solutions, and comprehensive services

MARCH 20 - APRIL 28 2023

Fiberglass Step Ladders

FS-1500 SERIES 1A - 300lb Rating

LOFS1504	
4'.....	\$98.00
LOFS1505	
5'.....	\$103.00
LOFS1506	
6'.....	\$127.00
LOFS1508	
8'.....	\$172.00
LOFS1510	
10'.....	\$256.00
LOFS1512	
12'.....	\$314.00



Cross-Step Ladder Series

FXS-1500 Series 2 IN 1 LADDER

LOFXS1504	
4'.....	\$106.00
LOFXS1506	
6'.....	\$137.00
LOFXS1508	
8'.....	\$186.00
LOFXS1510	
10'.....	\$277.00
LOFXS1512	
12'.....	\$339.00

Leanable Ladder!



Fiberglass Tri-Pod Ladders 1A - 300lb Rating FT-1500 SERIES

LOFT1506	
6'.....	\$199.00
LOFT1508	
8'.....	\$246.00
LOFT1510	
10'.....	\$361.00



WFX300000: Extension
Ladder Walkthru

WFX300001: Extension
Ladder Walkthru Gate



Fiberglass Twin Step Ladders 1A - 300lb Rating FM-1500 SERIES

LOFM1504	
4'.....	\$165.00
LOFM1506	
6'.....	\$215.00
LOFM1508	
8'.....	\$296.00



Fiberglass Extension Ladders 1A - 300lb Rating FE-3200 SERIES

LOFE3216	
16'.....	\$234.00
LOFE3220	
20'.....	\$267.00
LOFE3224	
24'.....	\$309.00
LOFE3228	
28'.....	\$366.00
LOFE3232	
32'.....	\$456.00



2 IN 1 LEANING PLATFORM LADDER!

Fiberglass Platform to Leaning Ladder

375LB RATING FCP-1400HD SERIES

LOFCP1404HD	
4'.....	\$298.00
LOFCP1406HD	
6'.....	\$349.00
LOFCP1408HD	
8'.....	\$426.00

375LB

OSHA APPROVED FOR LEANING!

CROSS PINNACLE

SPOKANE

1503 E. Riverside Ave.
Spokane, WA 99202
(509) 535-9841
(800) 348-4808
(509) 534-3139 (Fax)

SEATTLE

18161 Segale Park Dr B.
Tukwila, WA 98188
(206) 764-9488
(800) 481-TOOL
(206) 764-9487 (Fax)

YAKIMA

812 E. Mead
Yakima, WA 98903
(509) 248-1144
(800) 243-5582
(509) 575-4696 (Fax)

EUGENE

490 S. Bertelsen
Eugene, OR 97402
(541) 342-3641
(800) 944-0165
(541) 343-1753 (Fax)

MEDFORD

1789 Sage Rd.
Medford, OR 97501
(541) 779-0187
(800) 871-3919
(541) 773-4599 (Fax)

BILLINGS

120 Moore Lane
Billings, MT 59101
(406) 248-7196
(800) 272-7196
(406) 248-7269 (Fax)

BOISE

2000 Century Way
Boise, ID 83709
(208) 377-0158
(800) 528-5118
(208) 377-0978 (Fax)

IDAHO FALLS

760 W. Broadway
Idaho Falls, ID 83402
(208) 522-7082
(208) 529-5456 (Fax)

KENNEWICK

501 N Quay St
Suite A-104
Kennewick, WA 99336
(509) 491-5072
(509) 981-6817



REPAIR DEPARTMENT:

Edge Construction Supply offers a complete repair department with factory-trained technicians servicing virtually all makes of equipment.

GET \$100 OFF RETAIL WHEN YOU TRADE IN A PROFESSIONAL GRADE CORDLESS TOOL & 2 BATTERIES



**MI2903-22: M18 FUEL™
1/2" DRILL KIT**



**MI2904-22: M18 FUEL™
1/2" HAMMER DRILL DRIVER KIT**



**MI2953-22: M18 FUEL™
1/4" HEX IMPACT DRIVER XC KIT**



**MI3697-22: M18 FUEL™
2-TOOL COMBO KIT**

BUY THIS



**MI2829-22: M18 FUEL™
COMPACT BANDSAW KIT**

GET YOUR CHOICE OF (1) FREE



**MI2904-20: M18 FUEL™
1/2" HAMMER DRILL/DRIVER**



**MI2953-20: M18 FUEL™
1/4" HEX IMPACT DRIVER**



BUY A SELECT M18 FUEL™ BARE TOOL



\$299

**MI2807-20: M18 FUEL™ HOLE
HAWG™ 1/2" RIGHT ANGLE
DRILL**



\$429

**MI2809-20: M18 FUEL™ SUPER
HAWG™ 1/2" RIGHT ANGLE DRILL**



\$429

**MI2811-20: M18 FUEL™ SUPER
HAWG™ RIGHT ANGLE DRILL
W/QUIK-LOK™**



\$249

**MI2980-20: M18 FUEL™
4-1/2"-6" GRINDER, PADDLE
SWITCH NO-LOCK BT**



\$349

**MI2912-20: M18 FUEL™
1" SDS+ ROTARY HAMMER**



\$449

**MI2915-20: M18 FUEL™ 1-1/8"
SDS+ ROTARY HAMMER**

GET A FREE HIGH OUTPUT™ 6.0 BATTERY



\$179 VALUE!

**MI48-11-1865: M18 REDLITHIUM™
HIGH OUTPUT™ 6.0 BATTERY™**



BUY A SELECT M18 FUEL™ BARE TOOL



\$249

**MI2732-20: M18 FUEL™
7-1/4" CIRCULAR SAW**



\$279

**MI2830-20: M18 FUEL™
REAR HANDLE 7-1/4"
CIRCULAR SAW**



\$249

**MI2722-20: M18 FUEL™
SUPER SAWZALL®**



\$379

**MI2729-20: M18 FUEL™
DEEP CUT BAND SAW**

GET A FREE HIGH OUTPUT™ 8.0 BATTERY



\$199 VALUE!

**MI48-11-1880: M18 REDLITHIUM™
HIGH OUTPUT™ 8.0 BATTERY™**

SPOKANE

1503 E. Riverside Ave.
Spokane, WA 99202
(509) 535-9841
(800) 348-4808
(509) 534-3139 (Fax)

SEATTLE

18161 Segale Park Dr B.
Tukwila, WA 98188
(206) 764-9488
(800) 481-TOOL
(206) 764-9487 (Fax)

YAKIMA

812 E. Mead
Yakima, WA 98903
(509) 248-1144
(800) 243-5582
(509) 575-4696 (Fax)

EUGENE

490 S. Bertelsen
Eugene, OR 97402
(541) 342-3641
(800) 944-0165
(541) 343-1753 (Fax)

MEDFORD

1789 Sage Rd.
Medford, OR 97501
(541) 779-0187
(800) 871-3919
(541) 773-4599 (Fax)

BILLINGS

120 Moore Lane
Billings, MT 59101
(406) 248-7196
(800) 272-7196
(406) 248-7269 (Fax)

BOISE

2000 Century Way
Boise, ID 83709
(208) 377-0158
(800) 528-5118
(208) 377-0978 (Fax)

IDAHO FALLS

760 W. Broadway
Idaho Falls, ID 83402
(208) 522-7082
(208) 529-5456 (Fax)

KENNEWICK

501 N Quay St
Suite A-104
Kennewick, WA 99336
(509) 491-5072
(509) 981-6817

BUY A SELECT M18 FUEL™ BARE TOOL

\$149



MI2953-20: M18 FUEL™ 1/4" HEX IMPACT DRIVER

\$199



MI2904-20: M18 FUEL™ 1/2" HAMMER DRILL/DRIVER

\$279



MI2767-20: M18 FUEL™ 1/2" HTIW W/RING

\$219



MI2854-20: M18 FUEL™ 3/8" IMPACT WRENCH W/RING

\$219



MI2855P-20: M18 FUEL™ 1/2" COMPACT IMPACT WRENCH W/PIN

\$199



MI2821-20: M18 FUEL™ SAWZALL® RECIP SAW

\$229



MI2836-20: M18 FUEL™ OSCILLATING MULTI-TOOL



\$169



MI2719-20: M18 FUEL™ HACKZALL™

\$199



MI2737-20: M18 FUEL™ D-HANDLE JIG SAW

\$219



MI2730-20: M18 FUEL™ 6-1/2" CIRCULAR SAW

\$379



MI2840-20: M18 FUEL™ 2 GAL COMPACT QUIET COMPRESSOR

\$249



MI2782-20: M18 FUEL™ METAL CIRCULAR SAW

\$199



MI2880-20: M18 FUEL™ 4-1/2" / 5" SAG PADDLE, NO LOCK

\$199



MI2881-20: M18 FUEL™ 4-1/2" / 5" SAG SLIDE, LOCK ON

Milwaukee

M18 FUEL

DRIVEN TO OUTPERFORM.

\$249



MI2939-20: M18 FUEL™ DIE GRINDER SLIDE 27K BT

\$249



MI2888-20: M18 FUEL™ 4-1/2" / 5" VARIABLE SPEED BRAKING GRINDER, PADDLE SWITCH, NO LOCK

GET A FREE XC5.0 BATTERY

\$159 VALUE!



MI48-11-1850: M18™ REDLITHIUM™ XC5.0 BATTERY PACK

NEW LOWER PRICE!

\$249



MI2646-21CT: M18™ 2-SPD GREASE GUN

BUY (1) M18™ HIGH OUTPUT 6.0 BATTERY

M18



\$179

MI48-11-1865: M18 REDLITHIUM™ HIGH OUTPUT™ XC6.0 BATTERY

RECEIVE (1) FREE M18 CP 3.0 BATTERY



\$119 VALUE!

MI48-11-1835: M18 REDLITHIUM™ HIGH OUTPUT™ CP3.0 BATTERY

BUY AN M18™ FORCE LOGIC™ KNOCKOUT

\$1599



MI2677-23: M18™ FORCE LOGIC™ 6-TON KNOCKOUT KIT 1/2" TO 4"

\$2149



MI2676-23: M18™ FORCE LOGIC™ 10-TON KNOCKOUT KIT 1/2" TO 4"

GET A FREE M18 FUEL™ 2-TOOL COMBO KIT



MI3697-22: M18 FUEL™ 2-TOOL COMBO KIT



\$1966

KN109

4-Drawer rolling work bench
60"X24"X60" (800 lb. load capacity)
*Ask about other configurations



\$913

KN60

Jobsite Storage Chest
60"WX24"DX23"H (20 cubic ft.)



THE SAFETY KAGE!!!

KN139-SK-01:

The Model **KN139-SK-01** Safety Kage™ cabinet is an Industry First, designed to store all your jobsite safety items. Provides a safe, ventilated and secure area for all your fall protection, First aid kit storage, Fire extinguisher, Eye wash equipment, and more. includes the Watchman IV lock system.

\$3140



All Items Shown in Safety Kage are Sold Separately!



\$909

KN4830

Jobsite Storage Chest
48"WX30"DX34"H (25 cubic ft.)



\$619

KN42

Jobsite Storage Chest
42"WX19"DX23"H (9 cubic ft.)



\$1432

KN79

Storagemaster Piano Box
w/ large dual folding doors
48W"X30D"X49H" (38 cubic ft.)



\$1439

KN89

Jobsite Storage Chest
46"HX30"DX60"W (48 cubic ft.)



\$763

KN4824

Jobsite Storage Chest
48"WX24"DX28"H (16 cubic ft.)



\$2340

KN139

Jobmaster® Cabinet
Available w/ & w/o Drawers
60"x30"x57" (55 cubic ft.)



\$2743

KN100

Jobsite Rolling Cabinet
60"WX30"D (closed)X58.5"H (60.9 cubic ft.)
Shelves are 14" deep



\$381

KNPT-01
Planzboard™
Mobile Work Station



\$3739

KN119-02

Mobile Heavy Duty Field Station
Watchman® 5 lock system.
82"X60"X42"
(115.2 Cubic ft. capacity)



\$4386

KN118-M
Mobile Datavault

Mobile digital plan station for data connectivity on the worksite. Includes 32" monitor, 4 GFCI outlets, back up power supply for 30 minutes of emergency power.



\$7741

KN118-01
Datavault Field Station

Mobile digital plan station for data connectivity on the worksite. Includes 40" monitor, Laser printer w/ airprint, 2 power strips, 4 GFCI outlets, 4 port USP hub, 2 port USB switch, back up power supply for 30 minutes of emergency power. Designed to fit through standard 36" wide doors.



Rubbermaid



Turn your cart into safe, secure storage

KNCA-01: Fits Rubbermaid 4520-00 Round Handle **\$359**

KNCA-02: Fits Rubbermaid 9T66 Round Handle **\$319**

KNCA-03: Fits Rubbermaid 9T67-00, 4520-89 Flat Handle

KNCA-05: Fits Southwire UTCS-LG **\$359**



RB4520: 2 Shelf Utility Cart
500# Capacity,
45"L x 26"W x 33"H

RB4500: 2 Shelf Utility Cart
500# Capacity,
39"L x 18"W x 33"H



WFA510300: R3 REUSABLE 5K CONCRETE ANCHOR Secure one-hand operation with push-to-stop installation, quick-release button for removability



WFC311100: 6' DECOIL LANYARD (DCELL SHOCK PACK, 1" WEB, SNAP HOOK) WebAlert inspectable polyester webbing makes wear and damage visible and obvious



WFH012002: PROFORM™ F3 STANDARD HARNESS, TONGUE BUCKLE LEGS (M/L)



WFA111006: 6' CROSS ARM STRAP Features large O-ring and standard D-ring for pass through



WFA550000: I-BEAM SLIDING ANCHOR Fits beam flanges from 3-1/2" to 14" with thickness of 1-1/4"



WFC441200: 6' DECOIL STRETCH TWINLEG LANYARD (DCELL SHOCK PACK, ELASTIC WEB, SNAP HOOK, REBAR HOOK) Elastic webbing contracts lanyard length from 6' to 4' to reduce the hazards of tripping, twin leg design for 100% tie-off



WFA216400: STEEL BULL RING ANCHORAGE CONNECTOR 2" connector ring



WFR430006: 6' BANTAM WEB SELF-RETRACTING LIFELINE Minimizes fall arrest distance to 24" while keeping average arrest forces to 900lb



WFR433006LE: 6' BANTAM TWINLEG WEB SELF-RETRACTING LIFELINE, LEADING EDGE CAPABILITY Tested and approved for use over steel beam, precast concrete and b-deck, minimum arrest distance is less than 24" when used overhead



WFR410050LE-SR: 50ft MAX PATROL SELF-RETRACTING LIFELINE, LEADING EDGE CAPABILITY Tested and approved for use over steel beam, precast concrete and b-deck, minimum arrest distance is less than 32" when used overhead, steel swivel snap hook



WFH212002: BLUE ARMOR STANDARD (BACK D-RING) HARNESS (M/L)

WFH212004: BLUE ARMOR STANDARD (BACK D-RING) HARNESS (XL) Lightweight, form fitting padding with breathable compression interior is designed to protect user and prevent tangling when donning, 5-point adjustments for optimal fit



WFR431006: 6' BANTAM TWINLEG WEB SELF-RETRACTING LIFELINE Minimizes fall arrest distance to 24" while keeping average arrest forces to 900lb

Ask your EDGE Sales Rep about scheduling a Fall Safety Training at your shop or jobsite



TYPE 2 SAFETY HELMET

- MI48-73-1321:** White, Front Brim, Non-Vented
- MI48-73-1330:** Black, Front Brim, Vented
- MI48-73-1335:** Gray, No Brim, Non-Vented
- MI48-73-1337:** Gray, Front Brim, Non-Vented

Protects top and side impact. BOLT™ compatible with four BOLT™ accessory slots and two universal accessory slots that easily integrate additional personal protection equipment. Comfortable padded suspension includes an adjustable swinging ratchet for better comfort.



ANSI Certified Type II, Class E industrial climbing helmet that offers superior impact protection while working at heights or in confined spaces. MIPS® (Multi-directional Impact Protection System) is a low frictional layer designed to reduce rotational motion transferred to the head from angled impacts. EPS foam impact liner helps absorb the forces of front, side, or rear impacts.



PIP280-HP1491RM-01: White
PIP280-HP1491RM-11: Black
PIP280-HP1491RM-09: Gray

SPOKANE

1503 E. Riverside Ave.
Spokane, WA 99202
(509) 535-9841
(800) 348-4808
(509) 534-3139 (Fax)

SEATTLE

18161 Segale Park Dr B.
Tukwila, WA 98188
(206) 764-9488
(800) 481-TOOL
(206) 764-9487 (Fax)

YAKIMA

812 E. Mead
Yakima, WA 98903
(509) 248-1144
(800) 243-5582
(509) 575-4696 (Fax)

EUGENE

490 S. Bertelsen
Eugene, OR 97402
(541) 342-3641
(800) 944-0165
(541) 343-1753 (Fax)

MEDFORD

1789 Sage Rd.
Medford, OR 97501
(541) 779-0187
(800) 871-3919
(541) 773-4599 (Fax)

BILLINGS

120 Moore Lane
Billings, MT 59101
(406) 248-7196
(800) 272-7196
(406) 248-7269 (Fax)

BOISE

2000 Century Way
Boise, ID 83709
(208) 377-0158
(800) 528-5118
(208) 377-0978 (Fax)

IDAHO FALLS

760 W. Broadway
Idaho Falls, ID 83402
(208) 522-7082
(208) 529-5456 (Fax)

KENNEWICK

501 N Quay St
Suite A-104
Kennewick, WA 99336
(509) 491-5072
(509) 981-6817



MKCSM6504058FSC: 6.5"X40T Steel cutting 5/8" arbor
MKCSM948FSC: 9"X48T Steel cutting 1" Arbor
MKCSM7254858FSC: 7-1/4"X48T Steel cutting 5/8" KO Arbor
MKCSM53832FSC: 5-3/8"X32T Steel cutting 5/8" Arbor
MKCSM1466FSC: 14"X66T Steel cutting 1" Arbor
More Blades in stock, including blades for cutting Stainless Steel, Aluminum, Thin Steel and Steel Studs (14" only).

20% Rebate on the purchase of any Metal Devil Blade!



MKCSM148B: METAL DEVIL 14" METAL CUTTING SAW



MKCSM9NXTB: METAL DEVIL 9" METAL CUTTING CIRCULAR SAW



MKCSM7NXTB: METAL DEVIL 7" METAL CUTTING CIRCULAR SAW



MKZWEP321418MC: 32-7/8"X1/2"X.020 14/18T
MKZWEP351216MC: 35-3/8"X 1/2"X.020 12/16T
MKZWEP351418MC: 35-3/8"X1/2"X.020 14/18T
MKZWEP441014MC: 44-7/8"x1/2"x.020 10/14T
MKZWEP441418MC: 44-7/8"X1/2"X.020 14/18T

MASTER COBALT® VARIABLE PITCH BAND SAW BLADES

Featuring bi-metal construction for long blade life and variable pitch teeth for efficient, reduced vibration cutting.



**Buy 4 hole saws
Get 1 free!**

BI-METAL MHS SERIES HOLE SAWS

General purpose cutting across a wide range of materials including metals, wood, drywall and composites. Sizes available from 9/16" - 6-5/8"



MKMHS02E: 8pc Electricians Kit 7/8" - 2-1/2"

\$63



MKMHS04P: 8pc Plumbers Kit 3/4" - 2-1/4"

\$62



MKMHS08E: 13pc Master Electrician Kit 7/8" - 4-1/2"

\$129



MKMHS16P: 16pc Master Plumbers Kit 3/8" - 4-1/2"

\$144

BLOWOUT PRICE! (price includes wheel kit and battery)



Honda GX390 Engine
 Low Oil Protection
 Full Panel GFCI
 7,500 Starting Watts
 6,720 Running Watts
 56 Running Amps @ 120VAC
 28 Running Amps @ 240 VAC

\$2100

WGDP7500

WG16199-039: 2-Wheel Kit for DP7500 Generator



WGWL12000HE

Honda GX6300 Engine
 YourGen Meter displays house, RPMs, voltage and frequency settings
 Low Oil Protection
 Full Panel GFCI
 12,000 Starting Watts
 10,800 Running Watts
 90 Running Amps @ 120VAC
 45 Running Amps @ 240 VAC

Free Firestop Submittals • Free Firestop Training With Install Certification • Free Job Site Assistance & Coordination Meeting Support
Free Engineering Judgements With Fastest Turns in the Industry



SpecSeal SSB Firestop Pillows easily compress and conform around any penetrant.



Spec Seal EP Powershield Electrical Box Inserts install within steel electrical boxes directly against the back of the box.



SpecSeal ES Sealant is a latex-based gun grade elastomeric firestop sealant designed for construction joint applications.



SpecSeal Cast-In Devices are a sleeve, concrete form and firestop rolled into a single device. Tested for combustible and non-combustible penetrants. Incorporates built in smoke and water resistant seal.



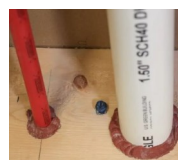
SpecSeal SSP Firestop Putty excels at sealing cabling penetrations and outlet boxes. Non-hardening.



SpecSeal Smoke N' Sound Sealant is a high quality acrylic latex sealant designed for sealing through-penetrations and membrane penetrations in smoke rated walls.



SpecSeal LCI Firestop Sealant is a water-based intumescent sealant intended for a wide range of through-penetration and construction joint applications.



WF300 Intumescent Firestop Caulk is a latex based firestop caulk designed for residential wood frame construction.



The **EZ Path Fire-Rated Pathway** is a maintenance-free pathway solution for cables through fire-rated wall assemblies.

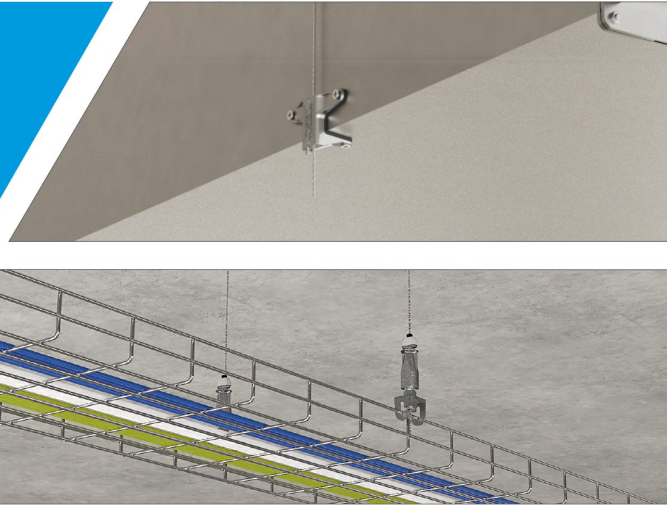
GRIPPLE SUSPENSION SOLUTIONS

TOOL-FREE HEIGHT ADJUSTABLE SIGNIFICANT LABOR SAVINGS SAFE

Suspension of HVAC, Electrical, and Lighting Services

Gripple's range of cable hangers provides fast and versatile suspension solutions. Multiple attachment options and variable lengths of cable can meet the unique demands of your installation.

- Butterfly Trapeze
- Duct Trapeze
- Express Hanger
- UniGrip
- Standard Hanger



Build your Kit

1. Cable Size

Choose your cable size based on weight.

No.1 thru No.5
(25 lb thru 715 lb SWL)

2. Cable Length

Choose your cable length
(5ft thru 30ft)

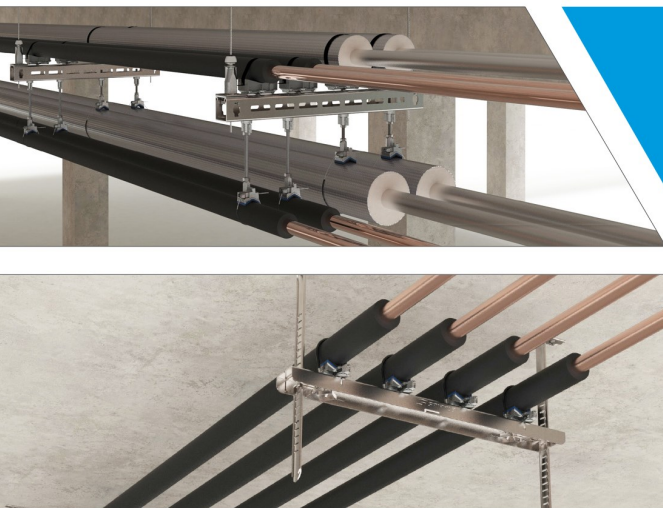
3. End Fixing

Choose your pre-attached end fixing
(Loop, Stud, 90 Eyelet, Toggle, Hook, Shot Fire, and more)



4. Fastener

Choose a fastener
(Standard, Express, Duct Trapeze, Butterfly Trapeze, UniGrip)



Suspension of Piping, VRF, and Conduit

Gripple's suspension methods for piping range from cable hangers to rigid trapeze solutions, with clamps that accommodate a wide variety of pipe sizes.

- Fast Trak
- Quick Twist Clamps
- UniGrip
- Universal Bracket or Standard Strut

Ask about Gripple's Spider
Cast-in-Place Concrete Insert solution!



Ask about Gripple Seismic Bracing,
job take-offs, and full design quotes.



1503 E. Riverside
P.O. Box 3437
Spokane, Washington 99220

PRESORTED
STANDARD

U.S. POSTAGE

PAID

Spokane, WA 99201

Permit No. 888

EDGE PROFESSIONAL SERVICES ENGINEERED SYSTEMS

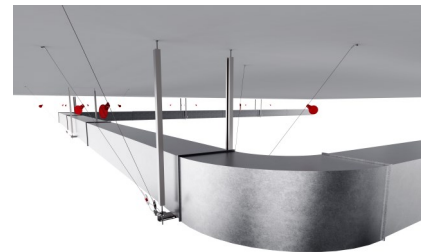
Design, Fabrication, Installation

*Lindapter Beam to Beam
Non-Welded Connections*



Edge Engineered Systems department has over 30 years experience in providing solutions for Unistrut framing systems, permanent fall protection systems, seismic bracing, equipment vibration isolation, Lindapter connections and other designed systems.

Gripple Seismic Bracing



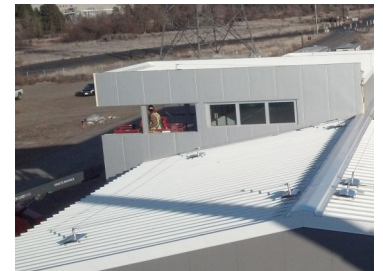
Unistrut Designed Systems



Unistrut Pre-Fab Systems



Permanent Fall Protection Systems



SPOKANE

1503 E. Riverside Ave.
Spokane, WA 99202
(509) 535-9841
(800) 348-4808
(509) 534-3139 (Fax)

SEATTLE

18161 Segale Park Dr B.
Tukwila, WA 98188
(206) 764-9488
(800) 481-TOOL
(206) 764-9487 (Fax)

YAKIMA

812 E. Mead
Yakima, WA 98903
(509) 248-1144
(800) 243-5582
(509) 575-4696 (Fax)

EUGENE

490 S. Bertelsen
Eugene, OR 97402
(541) 342-3641
(800) 944-0165
(541) 343-1753 (Fax)

MEDFORD

1789 Sage Rd.
Medford, OR 97501
(541) 779-0187
(800) 871-3919
(541) 773-4599 (Fax)

BILLINGS

120 Moore Lane
Billings, MT 59101
(406) 248-7196
(800) 272-7196
(406) 248-7269 (Fax)

BOISE

2000 Century Way
Boise, ID 83709
(208) 377-0158
(800) 528-5118
(208) 377-0978 (Fax)

IDAHO FALLS

760 W. Broadway
Idaho Falls, ID 83402
(208) 522-7082
(208) 529-5456 (Fax)

KENNEWICK

501 N Quay St
Suite A-104
Kennewick, WA 99336
(509) 491-5072
(509) 981-6817