



Construction Supply

the cutting edge

innovative products and solutions from the construction experts

VALID THROUGH DEC 15

Inquire about Purchase or Rental of Indirect or Other Style Heaters to Suit Your Job Needs!

Propane



LB100

LB170

LB400

LB400: Forced Air Heater

Electronic ignition for sure starts, 400,000 BTU/hr Propane.

LB100: 50,000-100,000 BTU/hr

LB170: 125,000-170,000 BTU/hr

LBLKT175: Kerosene forced air heater
175,000 BTU/hr



Electric

(Other sizes of high output electric heaters available, call for info)



TIPIFES-1024: 240v, 10 KW/42 Amps, single stage, 34,000 BTU/hr heat output. 240V / .



TPI198TMC: Combination radiant/fan forced air electric heater. 5120 BTU/hr, 120 V.



TPI188TASA: Milkhouse electric fan forced 4400 BTU/hr / 120V Portable heater

Single Stage Electric Heaters



PHE1.5:
5,100 BTU/hr
120V / 12.5A



PHE3:
10,200 BTU/hr
240V / 12.5A



PHE6:
20,500 BTU/hr
240V / 25A
6,000 Watts



PHE9:
30,700 BTU/hr
240V / 37.5A
9,000 Watts



\$99

TT0386-1293: Torch Handle Propane/MAPP Torch
Self lighting, Brazes, Solders



\$45

TT0387-0465: Torch Handle Auto lighting hand torch



\$45

TT0387-0464: Torch Kit Complete Firepower self lighting hand torch w/ disposable 1-pound propane tank



\$8.99

TT0916-0122: 14.1oz propane bottle, MPT-1 Map-Pro



\$6.99

TT0916-0004: 14.1oz propane bottle, PT-1 Propane.



\$99.99

NW5RC: Nuway Torch with 12' hose. Runs off Propane. (regulator sold separately)

SPOKANE

1503 E. Riverside Ave.
Spokane, WA 99202
(509) 535-9841
(800) 348-4808
(509) 534-3139 (Fax)

YAKIMA

812 E. Mead
Yakima, WA 98903
(509) 248-1144
(800) 243-5582
(509) 575-4696 (Fax)

EUGENE

490 S. Bertelsen
Eugene, OR 97402
(541) 342-3641
(800) 944-0165
(541) 343-1753 (Fax)

MEDFORD

1789 Sage Rd.
Medford, OR 97501
(541) 779-0187
(800) 871-3919
(541) 773-4599 (Fax)

BILLINGS

120 Moore Lane
Billings, MT 59101
(406) 248-7196
(800) 272-7196
(406) 248-7269 (Fax)

GILLETTE

105 Warren Ave.
Gillette, WY 82716
(307) 682-8522
(800) 670-6851
(307) 682-8576 (Fax)

BOISE

2000 Century Way
Boise, ID 83709
(208) 377-0158
(800) 528-5118
(208) 377-0978 (Fax)

IDAHO FALLS

760 W. Broadway
Idaho Falls, ID 83402
(208) 522-7082
(208) 529-5456 (Fax)

Gear Up For WINTER

HI-VIZ SAFETY



\$65

PIP Class 3 Rip Stop Bomber Jacket
#PIP333-1770

Hi-Visibility Rip Stop Bomber Jacket, ANSI 107 Class 3.

Features: Yellow with black trim body and cuffs, Adjustable hideaway hood "D" ring harness, 2" silver reflective tape

The most **Innovative** cold weather safety work jacket on the market



\$31

Zip or Hoodie your choice at this price

Majestic Hi-Viz Hooded Sweatshirt, Black Base

#MJ75-5327-(M, L, XL & XXL)

ANSI Class 3 Sweatshirt with hood, Ribbed cuffs/waist

Majestic Hi-Viz Zip Front Hooded Sweatshirt, Black Base

#MJ75-5325-(M, L, XL, XXL)



Jackets and Hoodies available in XXXL and larger for additional charge.



JS3000434: Wind Guard
Fits over cap style hard hat to keep wind out, flame retardant, warmth for 32° to 0°.



JS3000436: Wind Guard
Fits over full brim hard hat to keep wind out, flame retardant, warmth for 32° to 0°.

JACKSON
SAFETY Brand



JS3000442: Winter liner
225 Full quilted liner



JS3000441: Winter Liner 400
Wrap Liner w/ collar



MG3460: Thinsulate
S-XL



MG9622: Insulated
One size fits all!



MJ339HY Polar Penguin
M-XL



MJ3388 Atlas Thermo-Fit
S-XL



YA07001: Little Hotties Hand Warmers



YA08401: Yaktrax boot scrubber



YA08009: S
YA08011: M
YA08013: L
YA08015: XL
Pro Series Heavy Duty Traction Device

Winter snow & ice

STAY SAFE · STAY CLEAN · STAY WARM

SPOKANE
1503 E. Riverside Ave.
Spokane, WA 99202
(509) 535-9841
(800) 348-4808
(509) 534-3139 (Fax)

YAKIMA
812 E. Mead
Yakima, WA 98903
(509) 248-1144
(800) 243-5582
(509) 575-4696 (Fax)

EUGENE
490 S. Bertelsen
Eugene, OR 97402
(541) 342-3641
(800) 944-0165
(541) 343-1753 (Fax)

MEDFORD
1789 Sage Rd.
Medford, OR 97501
(541) 779-0187
(800) 871-3919
(541) 773-4599 (Fax)

BILLINGS
120 Moore Lane
Billings, MT 59101
(406) 248-7196
(800) 272-7196
(406) 248-7269 (Fax)

GILLETTE
105 Warren Ave.
Gillette, WY 82716
(307) 682-8522
(800) 670-6851
(307) 682-8576 (Fax)

BOISE
2000 Century Way
Boise, ID 83709
(208) 377-0158
(800) 528-5118
(208) 377-0978 (Fax)

IDAHO FALLS
760 W. Broadway
Idaho Falls, ID 83402
(208) 522-7082
(208) 529-5456 (Fax)

It's Starting To Get Dark Early - Be Prepared With All Your Temp Lighting Needs from Edge



DUAL HALOGEN TRIPOD LIGHTS

22,000 lumens w/ both lights

CEP5610-I: 1000 Watt Import

\$46.80

CEP5710: 1000 Watt Heavy Duty.

\$126.00



SINGLE HALOGEN TRIPOD LIGHTS

11,000 lumens

CEP5750: 500 Watt Heavy Duty

\$95.30



Wobblelight - Self righting work light.

WL175MH: 175 Watt/15,000 lumens Metal Halide

WL400MH: 400 Watt/40,000 lumen Metal Halide

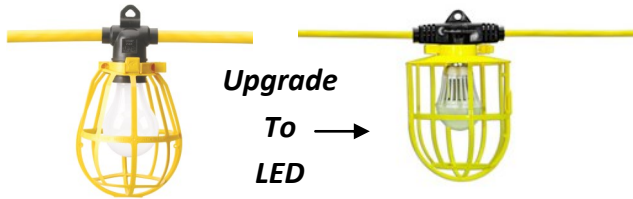
WL85SF: 85 Watt/ 5000 lumen Fluorescent

Magnetic Bracket



CEP97120: Temp Job Site Light

LED 6.6w, 20 ft cord length, 500 lumens.



Upgrade
To →
LED

COL07548-88-02: 50' String Lights

COL07549-88-02: 100' String Lights

(Uses standard bulbs)

WL111100: 100' LED String light
W/ plastic cage 12,000 lumens



CEP97132: Temp Job Site String Light,
LED 66 W, 100ft, 10 lights included, 500
lumens per fixture



COLL-1320 779 lumen Rechargeable LED

COLL-1681 23W 1474 lumen LED



COL07605-88-00: 400W36,000

lumens Temp Light

COL07625: Replacement Bulb



\$69.00

CEP5050: Quartz Flood 11,000 lumens
Magnetic Base-200 lb holding force,
On/Off switch, 8 ft, 16/3 ga. SJTW
power cord



\$14.00

CEP5125-I: "Stubby"
500 Watt 1 ft Height

\$18⁹⁹



RYRNHL3AAA-B:
Rough Neck Headlamp
Roughneck Series
80 Lumen LED

\$9⁹⁹



RYDIYHL3AAA-B:
Indestructible Headlamp
Indestructible Series
50 Lumen, 30 foot drop test



RYDIYBEAM-B: LED 4C Beam Lantern
150 Lumens. Virtually Indestructible
drop test to 15 feet



AS5894: Nebo Larry Light
Bright LED Pocket Light
w/ Magnetic Clip



\$18⁹⁹

AS6003: 90 Lumen LED Headlamp
w/ 2 Red LED's

AS5904: Nebo Bat Light
High Power 200 Lumen LED
Ideal for Self Defense



AS6092: Redline OC
600 LUX LED Bright White
Water & Impact Resistant
Tactical Edge

NEW PRODUCT



AS6156: SLYDE LED
250 Lumen Flashlight
190 Lumen Work light



YAMAHA
GENERATORS



YMEF5500DE: Quiet & Powerful
5500 watts, Electric start with
Battery, 22.9 amps @ 240V, 74dBA
& 9 Hr run time

YMEF7200DE: Quiet & Powerful
7200 watts, Electric start with
Battery, 25 amps @ 240V, 80dBA &
8 Hr run time

YMYG-2800i: 2800 watt
Inverter (15 hr run time/2500
watt sustained)

YMEF2000iS: Lightweight/ Quiet & Powerful
2000 watts, 79cc, 4-Stroke, OHV, Air-cooled,
Single cylinder. 11 hr runtime



\$399

COL01970-3R-02: Temp
Power Distribution Spider Box.
(6) 20A GFCI and circuit breaker
protected Nema 5-20 straight
blade receptacles with covers



COL01918-00-08: 50FT **\$259 50**
Twist lock 50 Amp 125/250 volt, 3 pole 4 wire
temp power cable.

COL01919-00-08: 100FT **\$399 50**
Twist lock, 50 Amp 125/250 Volt, 3 pole 4 wire
temp power cable.



Coleman Outdoor Cord
12/3, 15Amp Lighted End

COL02587-88-02: 25' **\$22.22**
COL02588-00-02: 50' **\$33.33**
COL02589-00-02: 100' **\$59.59**



Coleman Polar/Solar Cord
14/3, 15Amp Lighted End

COL01688-00-02: 50' **\$45.45**
COL01689-00-02: 100' **\$79.79**



\$29

COL26020-008-6: GFCI Adapter
12/3, 15 amp, 2ft, triple tap



Southwire®



\$11

COL03482-00-02:
Lighted 3-way adapter



\$19

COL09019-88-02: "W" Adapter
12/3, 15 amp.



\$2.99

COL09906-88-03: 3-Way adapter
Orange triple tap plug



Our inventory
is full!



Rayovac Ultra Pro: AAA - AA - C6 - D6 - 9V

Stock up on Batteries today!



Zipwall Barrier Systems

Create a dust barrier in minutes. No tape,
no ladders, no damage.

- ZWKIT-20** (20 ft pole kit)
- ZWSLP2** (12 ft pole kit)
- ZWSLP4** (Starter pack)
- ZWZIPPER** (zipper kit)



Keep Your Jobsite Cleared & Protected from the Elements



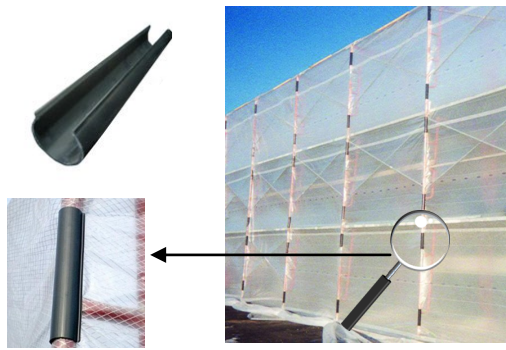
DuraSkrim Construction Enclosure:

Reinforced Enclosure Plastic. High strength poly construction and heavy duty scrim reinforcement easily helps Dura-Skrim® outperform the competition.

RNR5CC20100 (20X100 reinforced)

RNR5CC20100FR (20X100 reinforced fire retardant)

RNR5CC40100 (40'x100 reinforced)



Wind Clips: #WC
Easily attaches your sheeting to poles or scaffolding



TRACTION SAND: 70 LB Tube Sand Bag



- PO212C: 2 mil - 12x200 Clear
- PO406C: 4 mil - 6x100 Clear
- PO408C: 4 mil - 8x100 Clear
- PO410B: 4 mil - 10x100 Black
- PO410C: 4 mil - 10x100 Clear
- PO610C: Clear 6 mil - 10x100
- PO620C: Clear 6 mil - 20x100
- PO620B: Black 6 mil - 20x100
- PO620FR: Fire Retardant
- PO820C: Clear 8 mil - 20x100
- PO1020B: 10 mil - 20x100 Black



Multi-Purpose Tarps

- TWT0608: 6'X8' Blue
- TWT0810: 8'X10' Blue
- TWT1012: 10'X12' Blue
- TWT1020: 10'X20' Blue
- TWT1216: 12'X16' Blue
- TWT1220: 12'X20' Blue
- TWT1620: 16'X20' Blue
- TWT1824: 18'X24' Blue



UF16-404
18" Aluminum Snow Shovel



UF16-393
24" Steel Snow Pusher



UF16-815:
Poly Snow Scoop

UF53-102:
Aluminum Snow Scoop #12 size

UF53-103:
Aluminum Snow Scoop #10 size

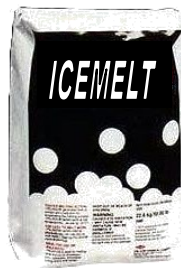
UF16-407
18" Steel Shovel



UF16-345:
Snow Roof Rake



UF16-936:
7" Sidewalk/Ice scraper

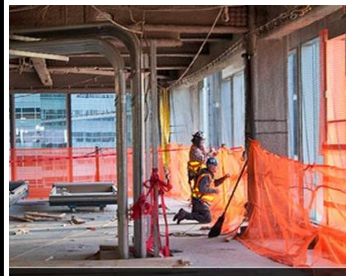


ICEMELT: 50 lb bag

Eagle Enclosures - Safety Guard Netting



Ask an edge sales rep about Eagle Products!



SAFETY GUARD

Safety Guard is a lightweight debris netting designed to protect falling tools and debris as well as personnel working near structural edges and open-sided buildings.

Available in multiple colors specifications.

- Debris Netting
- Safety Netting
- Shrink Wrap
- Construction Tarp
- Reinforced Poly
- Scaffold Sheeting
- Safety Guard (Shown)
- Accessories - attachments

Look for many **More Great Products** throughout our stores!

CALL FOR MORE INFORMATION



Available in HT—Heavy Traffic and MT—Medium Traffic

SKUDO - Commercial Surface Protection System

Durable, Non-slip temporary surface protection for commercial jobs. Able to withstand machinery, shoring and the harshest environments. Designed for 12 months of interior

Highly Durable weather proof protection for long term solutions

SD1061MAT-MT: 6.5'W X 164'L (1075 sq. ft./roll)

SD1070MAT-HT: 6.5'W X 164'L (1075 sq. ft./roll)

SD1160-CONCRETE: Concrete base coat, 5 gal. pail

SD:1515: 9" Roller (3/8" mat)

SD1520: 18" Roller

SD1540: 5ft extension pole for rollers



SFBLD38100: Builder board
Durable economic floor protection for short term solutions (for indoor use)

SFCS24200W: Carpet Shield
Multiple lengths & widths available



SFSC3001PB: Slip on shoe covers.
Designed to fit over boots.
(10pr/bag)



SFCM2436: Clean mat 24"X36"
SFCM3636: Clean mat 36"X36"



DTD28715: 14" Chop Saw
Quik-Change™ Keyless Blade Change System. 15 Amp/5.5HP

\$189



DTDCR018: 20v Jobsite Radio
AC/DC corded / cordless operation
Compatible w/ 12V Max, 18V & 20V Max batteries

\$109



DTDCR006: Bluetooth Speaker
AC/DC or 12V/20V MAX Battery Packs

\$74



DTDW120K: Porta-Band saw w/ case
DTDW120: w/out case... \$269
5" deep cut, 10 amp, LED sight light

\$289



DTDCL040: 20V LED Flashlight
120 degree swivel head
Integral Hook

\$43



DTDCL043: 20v led Spotlight
Dual Switch Mode 1,000 Lumen Bright
White Spotlight & 90 Lumen Red LED Light

\$99



\$75
DTDCL060: 18v/20v Work Light
DTDCL061: 18v/20v & AC Power Light
Fits both 18V & 20V Batteries
\$99



NEW!
BLUE TOOTH
DTDCB204BT-2: 20v 4.0AH 2-Pack
Blue Tooth function allows you to remotely monitor the state of charge & enable/disable battery

NEW!

BLUE TOOTH